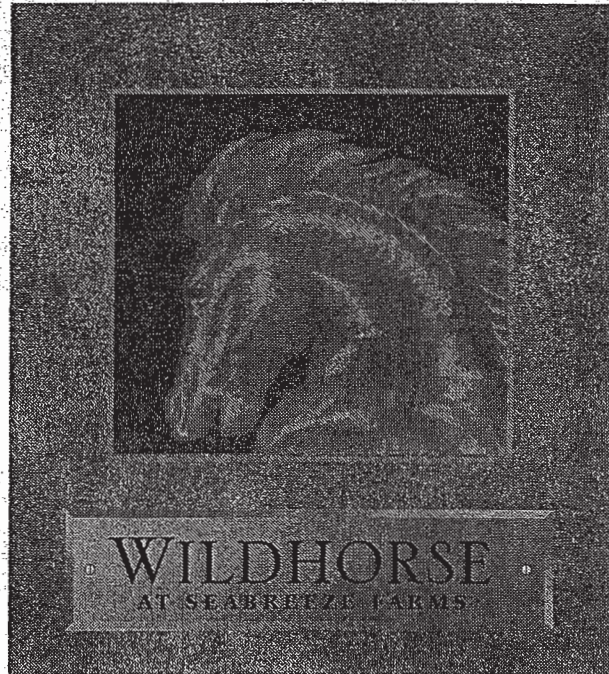


# Wildhorse

at Seabreeze Farms



12758 SEABREEZE FARMS DR.  
SAN DIEGO, CA 92130  
PHONE: 858 259 4100  
FAX: 858 259 4720

[www.centexhomes-sandiego.com](http://www.centexhomes-sandiego.com)

PRELIMINARY  
**CENTEX HOMES**

1A



ARTIST CONCEPT

1B



ARTIST CONCEPT

1C



ARTIST CONCEPT

PRELIMINARY

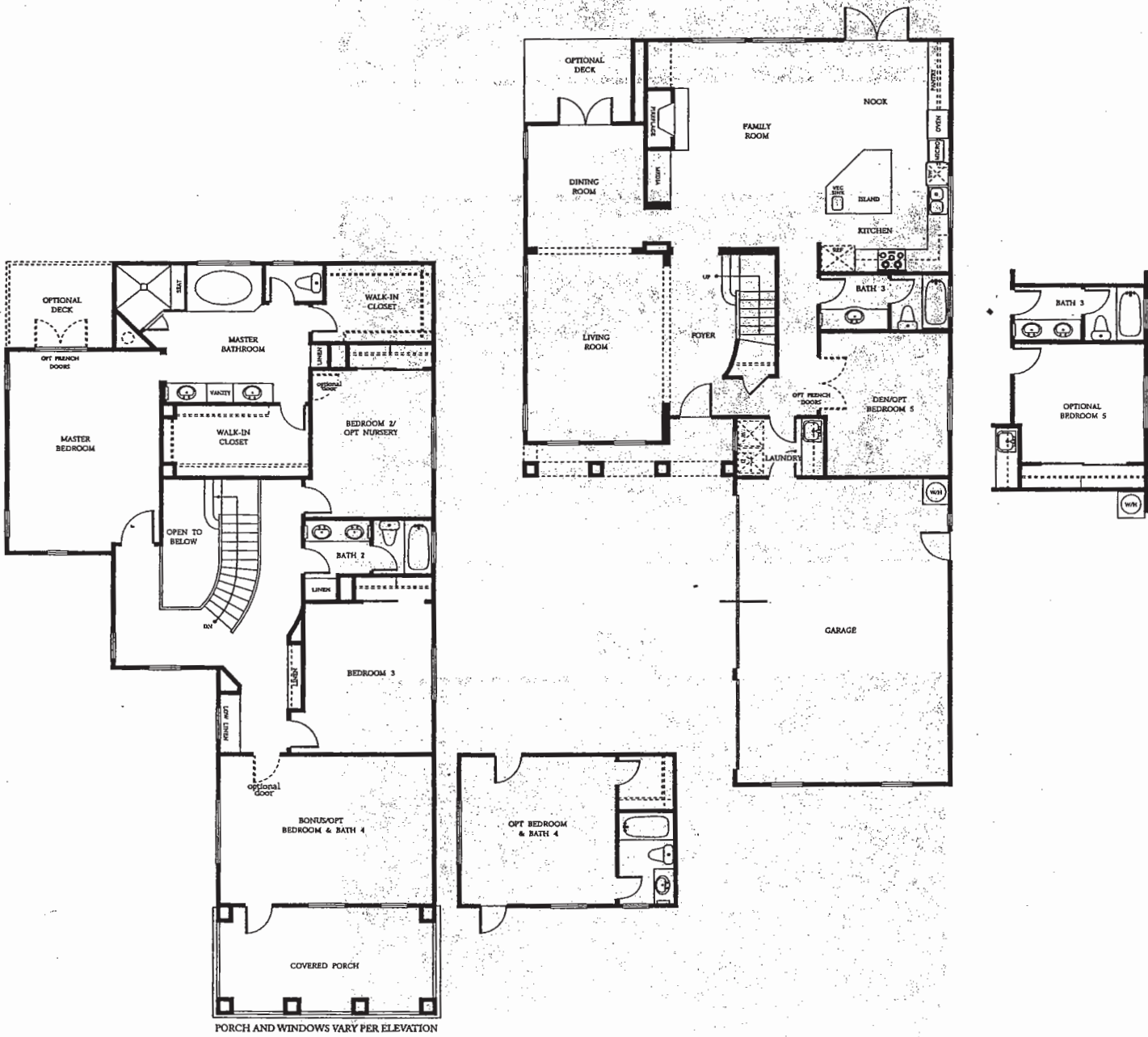


# RESIDENCE 1

APPROXIMATELY 3,163 SQ. FT.

TWO STORY • THREE BEDROOMS PLUS BONUS ROOM AND DEN • THREE BATHS  
 • INTERIOR LAUNDRY WITH SINK • THREE-CAR GARAGE

*Optional Bedroom 5 at Den, Optional Bedroom and Bath 4 at Bonus Room*

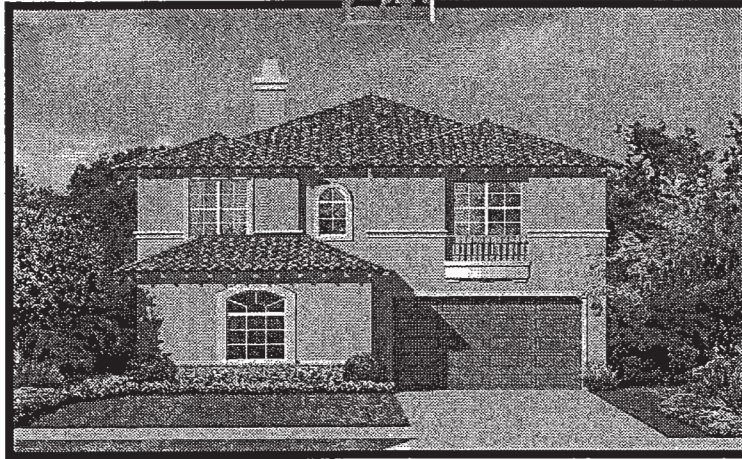


PORCH AND WINDOWS VARY PER ELEVATION

## PRELIMINARY

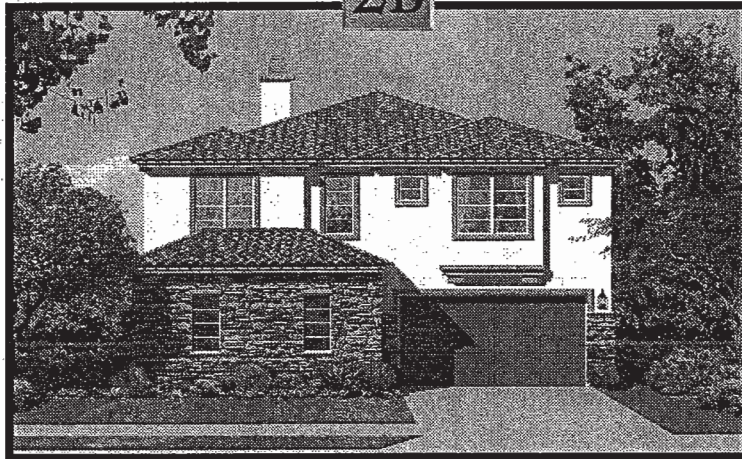
RESOURCES, FINANCING, PLANS, SPECIFICATIONS, FEATURES, SQUARE FOOTAGE, PRODUCT AVAILABILITY AND OTHER TERMS ARE SUBJECT TO CHANGE WITHOUT NOTICE. HOMES SUBJECT TO PRIOR SALE. SQUARE FOOTAGE IS APPROXIMATE. SEE YOUR TAX ADVISOR FOR DETAILS REGARDING DEDUCTIONS. RENDERING IS ARTIST'S CONCEPTION. MODELS DO NOT REFLECT RACIAL PREFERENCE. WE ARE PLEDGED TO THE LETTER AND SPIRIT OF U.S. POLICY FOR THE ACHIEVEMENT OF EQUAL HOUSING OPPORTUNITY THROUGHOUT THE NATION. WE ENCOURAGE AND SUPPORT AN AFFIRMATIVE ADVERTISING PLAN IN WHICH THERE ARE NO BARRIERS TO OBTAINING HOUSING BECAUSE OF RACE, COLOR, RELIGION, SEX, HANDICAP, FAMILIAL STATUS, OR NATIONAL ORIGIN. PLEASE CONSULT A SALES REPRESENTATIVE FOR DETAILS.

2A



ARTIST CONCEPT

2B



ARTIST CONCEPT

2C



ARTIST CONCEPT

PRELIMINARY

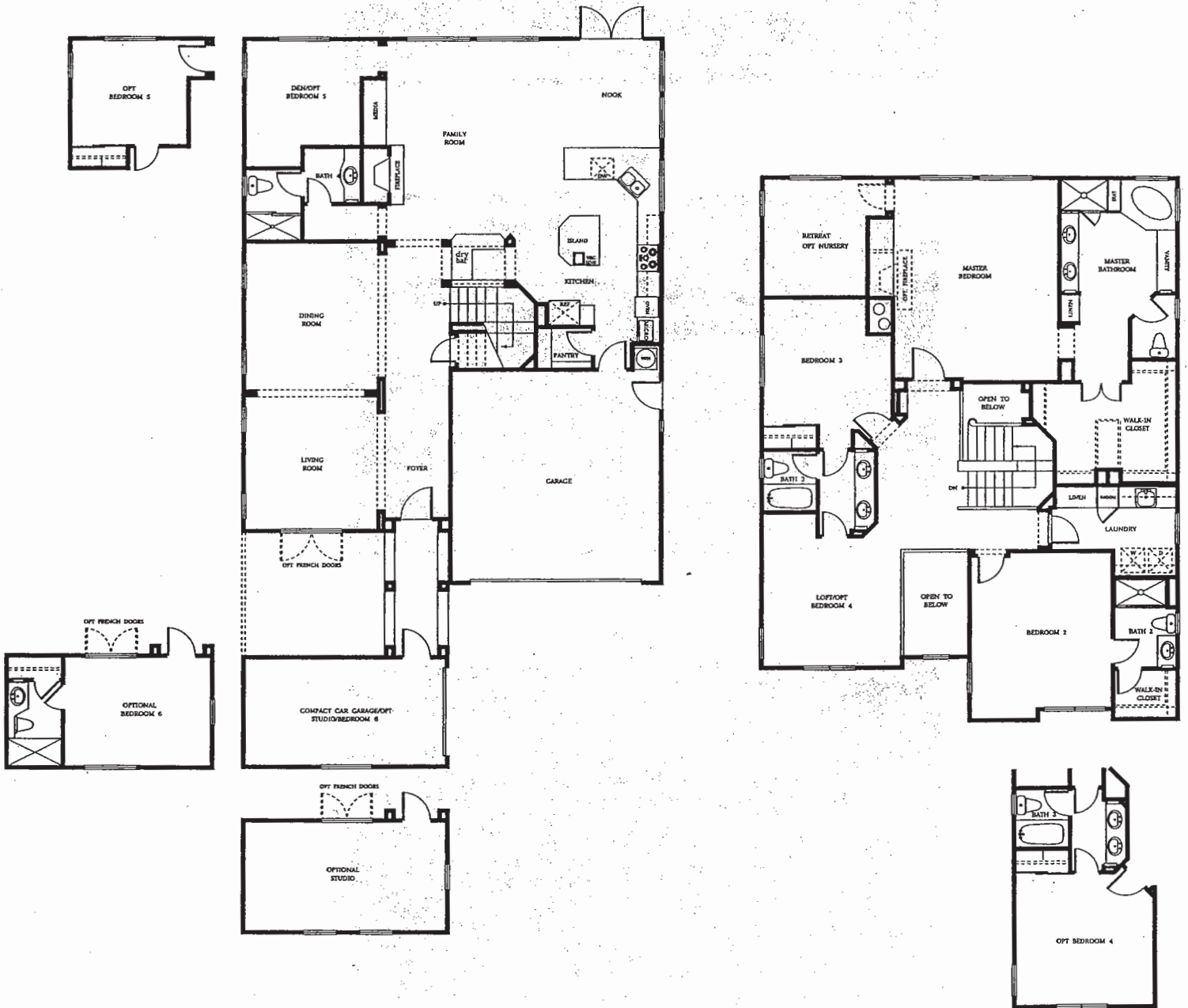


# RESIDENCE 2

APPROXIMATELY 3,397 SQ. FT.

TWO STORY • THREE BEDROOMS PLUS RETREAT, LOFT AND DEN • FOUR BATHS  
 • INTERIOR LAUNDRY WITH SINK • THREE-CAR GARAGE

*Optional Bedroom 5 at Den, Optional Studio or Bedroom 6 and Bath 5 at 1 Car Garage  
 Optional Bedroom 4 at Loft*



# PRELIMINARY

PLANS, SPECIFICATIONS, FEATURES, SQUARE FOOTAGE, PRODUCT AVAILABILITY AND OTHER TERMS ARE SUBJECT TO CHANGE WITHOUT NOTICE. HOMES SUBJECT TO PRIOR SALE. SQUARE FOOTAGE IS APPROXIMATE. SEE YOUR TAX ADVISOR FOR DETAILS REGARDING DEDUCTIONS. RENDERING IS ARTIST'S CONCEPTION. MODELS DO NOT REFLECT RACIAL PREFERENCE. WE ARE PLEDGED TO THE LETTER AND SPIRIT OF U.S. POLICY FOR THE ACHIEVEMENT OF EQUAL HOUSING OPPORTUNITY THROUGHOUT THE NATION. WE ENCOURAGE AND SUPPORT AN AFFIRMATIVE ADVERTISING PLAN IN WHICH THERE ARE NO BARRIERS TO OBTAINING HOUSING BECAUSE OF RACE, COLOR, RELIGION, SEX, HANDICAP, FAMILIAL STATUS, OR NATIONAL ORIGIN. PLEASE CONSULT A SALES REPRESENTATIVE FOR DETAILS.

3A



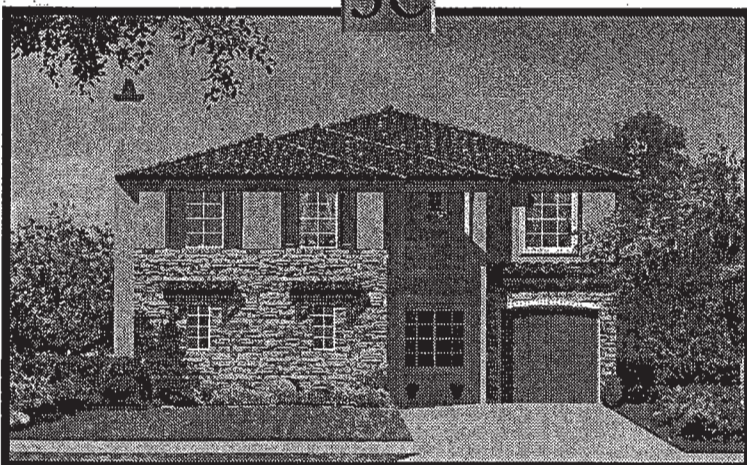
ARTIST CONCEPT

3B



ARTIST CONCEPT

3C



ARTIST CONCEPT

PRELIMINARY

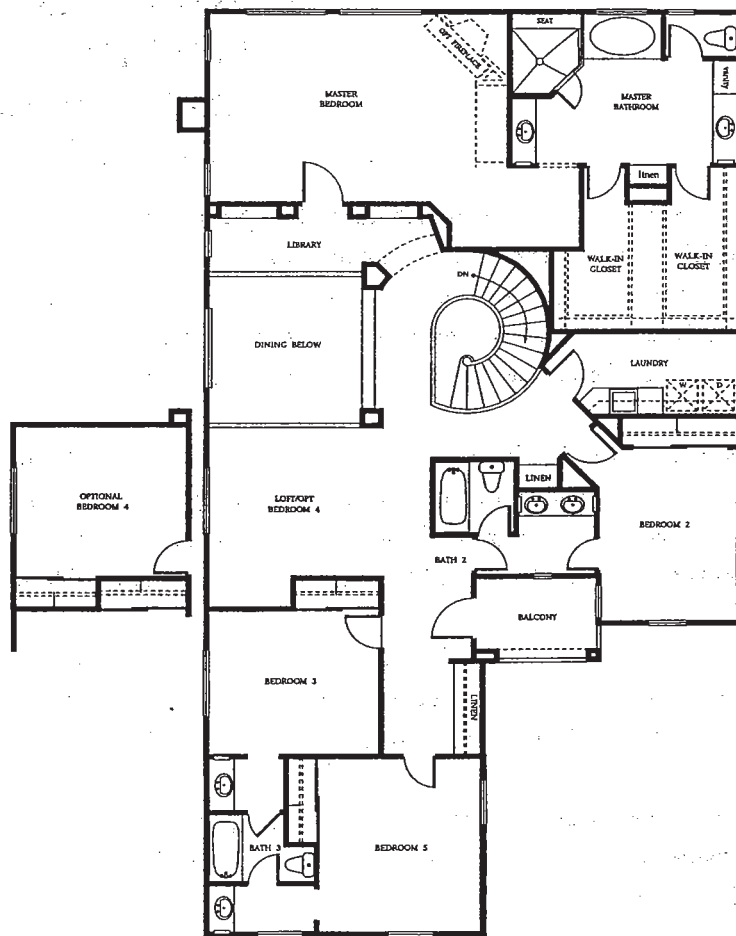
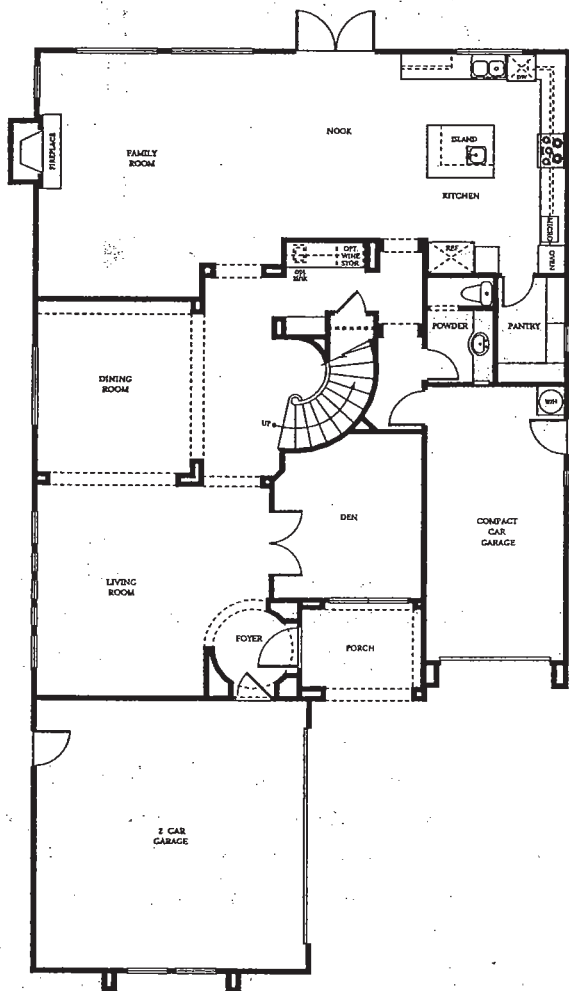


# RESIDENCE 3

APPROXIMATELY 3,770 SQ. FT.

TWO STORY • FOUR BEDROOMS PLUS LOFT; DEN, LIBRARY • THREE AND ONE-HALF BATHS  
 • INTERIOR LAUNDRY WITH SINK • THREE-CAR GARAGE

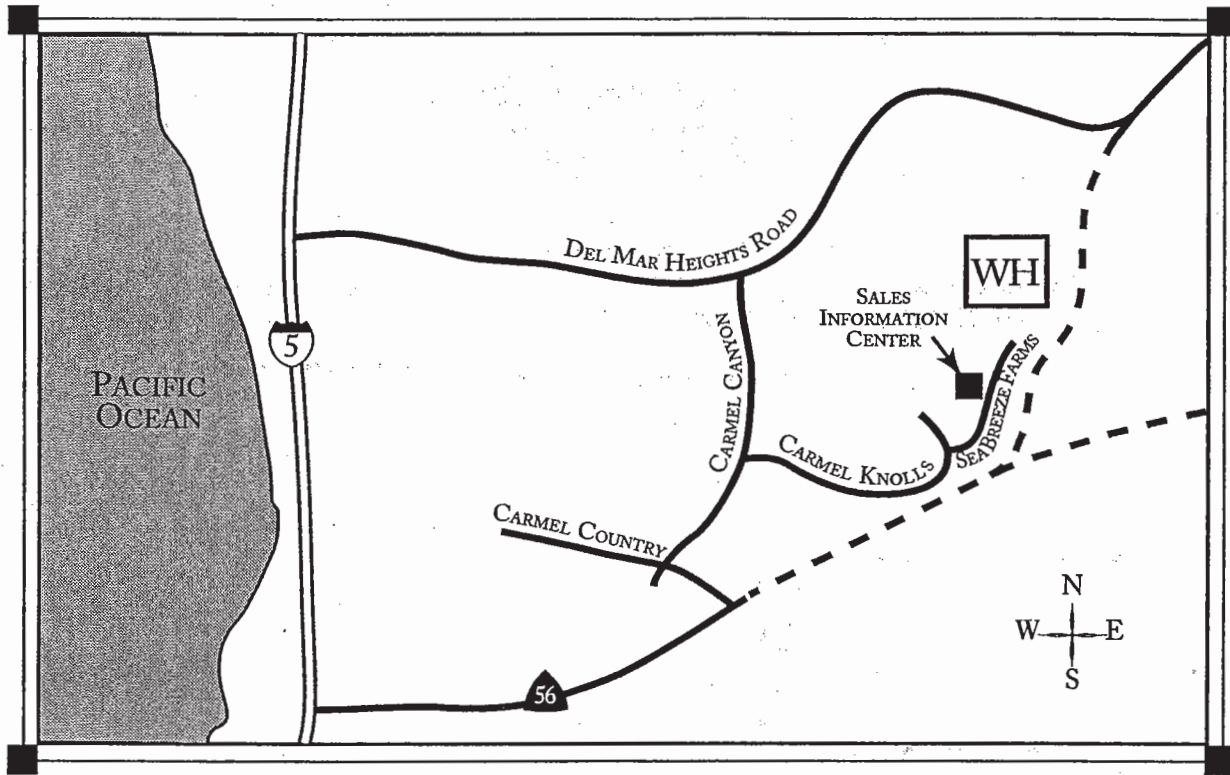
*Optional Bedroom 4 at Loft*



# PRELIMINARY

PRICES, FINANCING, PLANS, SPECIFICATIONS, FEATURES, SQUARE FOOTAGE, PRODUCT AVAILABILITY AND OTHER TERMS ARE SUBJECT TO CHANGE WITHOUT NOTICE. HOMES SUBJECT TO PRIOR SALE. SQUARE FOOTAGE IS APPROXIMATE. SEE YOUR TAX ADVISOR FOR DETAILS REGARDING DEDUCTIONS. RENDERING IS ARTIST'S CONCEPTION. MODELS DO NOT REFLECT RACIAL PREFERENCE. WE ARE PLEDGED TO THE LETTER AND SPIRIT OF U.S. POLICY FOR THE ACHIEVEMENT OF EQUAL HOUSING OPPORTUNITY THROUGHOUT THE NATION. WE ENCOURAGE AND SUPPORT AN AFFIRMATIVE ADVERTISING PLAN IN WHICH THERE ARE NO BARRIERS TO OBTAINING HOUSING BECAUSE OF RACE, COLOR, RELIGION, SEX, HANDICAP, FAMILIAL STATUS, OR NATIONAL ORIGIN. PLEASE CONSULT A SALES REPRESENTATIVE FOR DETAILS.





**12758 SEABREEZE FARMS DRIVE  
 SAN DIEGO, CA 92130  
 PHONE: 858-259-4166  
 FAX: 858-259-4720**

Centex Homes has been nationally ranked in the top ten home builders for over three decades. Centex is nationally known and highly respected for its achievements as a Fortune 500 company. Our reputation for Quality, Value, and Pride was not built overnight. It came from years of commitment toward continuous improvement and education at all levels within Centex Homes. It came from listening to you, our customer, understanding your needs and requirements and always striving to exceed the expectations we have established with our customers.

Nationwide, Centex Homes has been in the forefront of the home building industry, building hundreds of new neighborhoods of quality homes in many price ranges, in communities that feature the best of services and offer a variety of lifestyles. Including numerous Centex neighborhoods established in California, the company has over 40 home building Divisions throughout the United States from California to Florida and from the tip of Texas to the lakes of Minnesota.

Centex Homes, one of the Nation's largest home builders, is a subsidiary of Centex Corporation, a New York Stock Exchange Company with annual revenues over three billion dollars. We are putting these tremendous resources to work by providing our customers with a quality home, built with "Centex Pride" and the best value you can find today.

Above all else, Centex is committed to satisfying you, our customer. Our dedication to customer service is so paramount that we consider it a prime reason for you to buy a Centex home. The Centex Commitment to Customer Satisfaction is our promise to you.

**PRELIMINARY**  
**CENTEX HOMES**



[www.centexhomes-sandiego.com](http://www.centexhomes-sandiego.com)

7/14/00

# FEATURES

## INTERIORS

- FLEXIBLE FLOOR PLANS
- VOLUME CEILINGS IN SELECT AREAS
- MAPLE HANDRAIL AND NEWEL POSTS
- BULLNOSE CORNERS THROUGHOUT
- DELTA, POLISHED CHROME BATH FAUCETS WITH CERAMIC ACCENTS
- WOOD BURNING FIREPLACE
- WHITE DECORA LIGHT SWITCHES
- PRE-WIRED FOR CABLE IN ALL BEDROOMS, FAMILY ROOM, DEN, OFFICE, AND STUDY
- PRE-WIRED FOR TELEPHONE IN ALL BEDROOMS, KITCHEN, DEN, OFFICE, AND STUDY
- DESIGNER SELECTED LIGHT FIXTURES
- INTERIOR LAUNDRY AREA WITH SINK AND WHITE CABINETS
- SMOKE DETECTORS IN ALL BEDROOMS
- MEDIA NICHE(S)
- PAINTED WINDOW STOOL AND APRON IN SELECT AREAS
- CERAMIC TILE FLOORING AT ENTRY AND KITCHEN
- MAPLE CABINETRY WITH CHOICE FROM THREE AVAILABLE FINISHES
- POLISHED BRASS FINISHED DOOR HARDWARE
- STRUCTURED WIRING WITH TELEPHONE DISTRIBUTION AND AMPLIFIED CABLE DISTRIBUTION
- EIGHT ZONE SECURITY SYSTEM
- DESIGNER BASEBOARDS AND DOOR CASINGS THROUGHOUT

## GOURMET KITCHENS

- MAPLE CABINETRY WITH CHOICE FROM THREE AVAILABLE FINISHES
- GOURMET ISLAND WITH THE CONVENIENCE OF A DISPOSABLE VEGETABLE SINK
- CERAMIC, 6X6 TILE COUNTERS IN YOUR CHOICE OF WHITE OR ALMOND (FULL BACK SPLASH AT COOKTOP)
- WHIRLPOOL APPLIANCES IN YOUR CHOICE OF BLACK OR WHITE
  - 5 BURNER GAS, GLASS COOK TOP WITH MATCHING RANGE HOOD
  - SELF CLEANING, ELECTRIC DOUBLE OVEN
  - FULL SIZE, BUILT IN MICROWAVE WITH TURNTABLE
  - QUIET WASH PLUS MULTICYCLE DISHWASHER
- CASUAL BREAKFAST AREA
- DELTA, POLISHED CHROME, PULL OUT SINGLE LEVER FAUCET
- SPACIOUS PANTRY
- RECESSED LIGHTING
- SOUND INSULATED GARBAGE DISPOSAL(S)
- PLUMBED FOR AUTOMATIC ICE MAKER
- HI/LOW, CAST IRON/PORCELAIN SINK
- UNDER CABINET ACCENT LIGHTING

## MASTER SUITE

- WALK-IN CLOSETS
- MIRRORED WARDROBE DOOR(S)
- DOUBLE CHINA BASINS WITH DELTA WIDESPREAD FAUCETS
- 6X6, CERAMIC TILE COUNTERS IN YOUR CHOICE OF WHITE OR ALMOND
- ACRYLIC, 6 FOOT, OVAL ROMAN STYLE TUB
- SEPARATE WALK-IN SHOWER WITH BUILT-IN SEAT
- CLEAR GLASS SHOWER ENCLOSURE
- BEVELED FULL WIDTH VANITY MIRROR(S)
- FULL CERAMIC TILED SHOWER AND TUB SURROUND IN YOUR CHOICE OF WHITE OR ALMOND
- RECESSED LIGHTING AND DECORATIVE VANITY LIGHTS

## EXTERIORS

- A VARIETY OF DISTINCTIVE, TUSCAN- AND ITALIAN- THEMED ARCHITECTURAL EXTERIORS
- CONCRETE TILE ROOF
- DESIGNER SELECTED EXTERIOR COLOR SCHEMES
- EXTERIOR COURTYARD (PLAN 2)
- SECTIONAL ROLL UP GARAGE DOORS WITH QUIET OPENER ON 2 CAR GARAGE
- GAS STUB FOR OUTDOOR BARBECUE
- REAR AND SIDE YARD FENCING
- DECORATIVE EXTERIOR LIGHT FIXTURES
- COVERED BALCONY ON SELECT PLANS AND ELEVATIONS
- 3 CAR GARAGES WITH DRYWALLED FINISH
- DRAMATIC ENTRY
- RAIN GUTTERS IN APPROPRIATE LOCATIONS
- POST TENSIONED FOUNDATION SYSTEM
- CONCRETE DRIVEWAY AND WALKWAY
- PEST DEFENSE SYSTEM

## ENERGY SAVING

- DUAL GLAZED VINYL MILGARD WINDOWS THROUGHOUT
- FULLY INSULATED EXTERIOR WALLS AND CEILING AT LIVING AREAS
- GAS, FORCED AIR HEATING WITH SETBACK THERMOSTAT (DUAL ZONES)
- RECIRCULATING HOT WATER SYSTEM WITH TIMER
- 50 GALLON ENERGY EFFICIENT GLASS LINED GAS WATER HEATER
- HEAT SAVING GLASS FIREPLACE DOORS
- WATER SAVING PLUMBING FIXTURES THROUGHOUT

## CENTEX HOMES TAILORING OPPORTUNITIES

TO HELP YOU PERSONALIZE YOUR NEW HOME, CENTEX HOMES INVITES YOU TO TALK TO YOUR SALES REPRESENTATIVE ABOUT THE VARIETY OF CHOICES AVAILABLE THROUGH OUR HOME TAILORING CENTER.

**CENTEX HOMES**

**PRELIMINARY**

FINANCING, PLANS, SPECIFICATIONS, FEATURES, SQUARE FOOTAGE, PRODUCT AVAILABILITY AND OTHER TERMS ARE SUBJECT TO CHANGE WITHOUT NOTICE. HOMES SUBJECT TO PRIOR SALE. SQUARE FOOTAGE IS APPROXIMATE. SEE YOUR TAX ADVISOR FOR ALLS REGARDING DEDUCTIONS. RENDERING IS ARTIST'S CONCEPTION. MODELS DO NOT REFLECT RACIAL PREFERENCE. WE ARE PLEDGED TO THE LETTER AND SPIRIT OF U.S. POLICY FOR THE ACHIEVEMENT OF EQUAL HOUSING OPPORTUNITY THROUGHOUT THE NATION. WE ENCOURAGE AND SUPPORT AN AFFIRMATIVE ADVERTISING PLAN IN WHICH THERE ARE NO BARRIERS TO OBTAINING HOUSING BECAUSE OF RACE, COLOR, RELIGION, SEX, HANDICAP, FAMILIAL STATUS, OR NATIONAL ORIGIN. PLEASE CONSULT A SALES REPRESENTATIVE FOR DETAILS.