

Watercolors



John Slatton
Carmen Fernandez
(619) 794-0439
Fax: (619) 794-0468

Watercolors

carmel del mar

SHORE

Plan One

Approx. 2,163 square feet
3 Bedrooms Plus Den or
Optional 4th Bedroom,
2 1/2 Baths, 3 Car Garage

FROM: \$287,990 to \$303,990

COVE

Plan Two

Approx. 2,427 square feet
3 Bedrooms Plus Den or
Optional 4th Bedroom,
3 Baths, 3 Car Garage

FROM: \$311,990 to \$328,990

REEF

Plan Three

Approx. 2,709 Square Feet
4 Bedrooms Plus Superfamily
Room or Optional 5th Bedroom,
3 Baths, 3 Car Garage

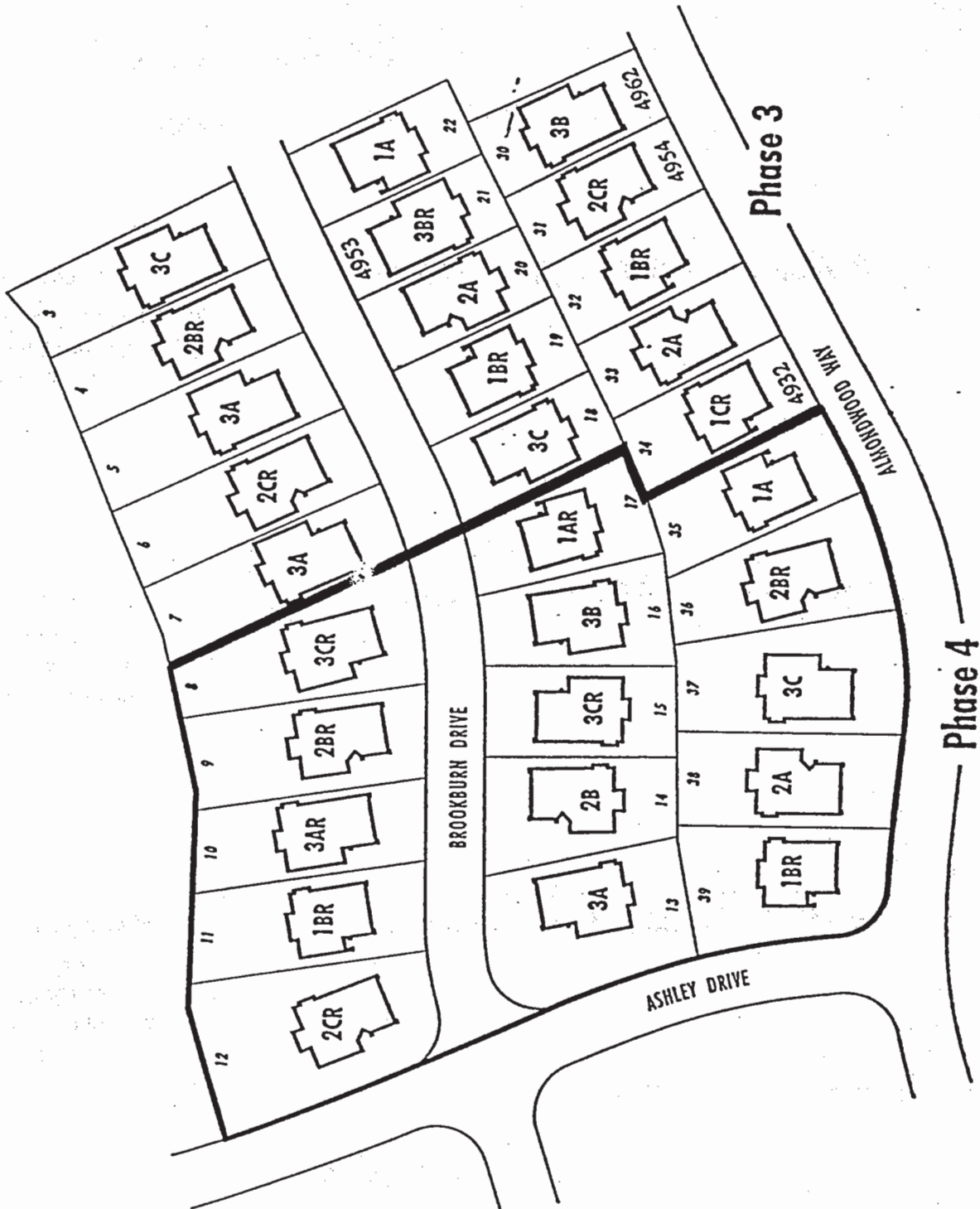
FROM: \$327,990 to \$347,990

5074 Brookburn Drive, San Diego, CA 92130

Prices and specifications are subject to change without prior notice.

10/4/96





SHORE

Plan One

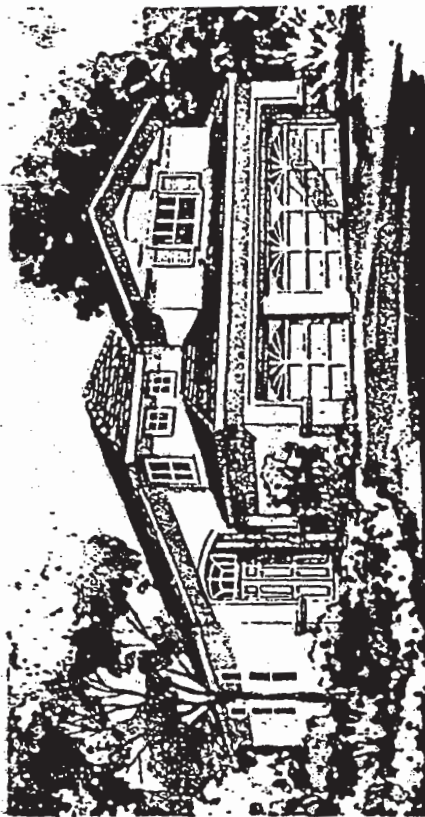


3 Bedrooms Plus Lot
or Optional 4th Bedroom

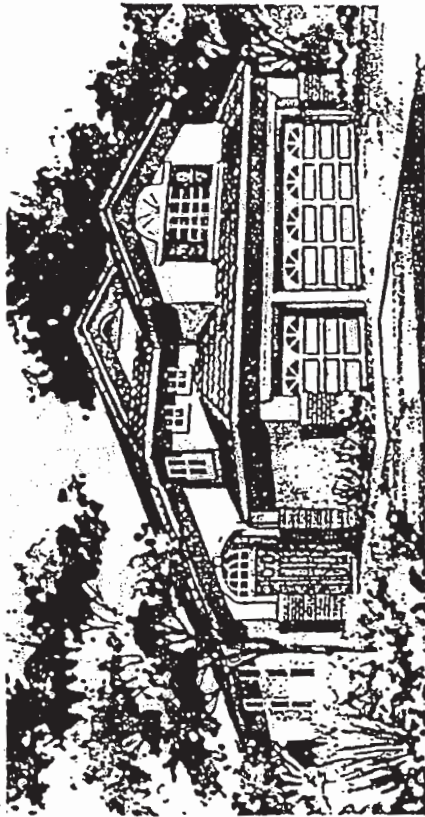
2 1/2 Baths

3 Car Garage

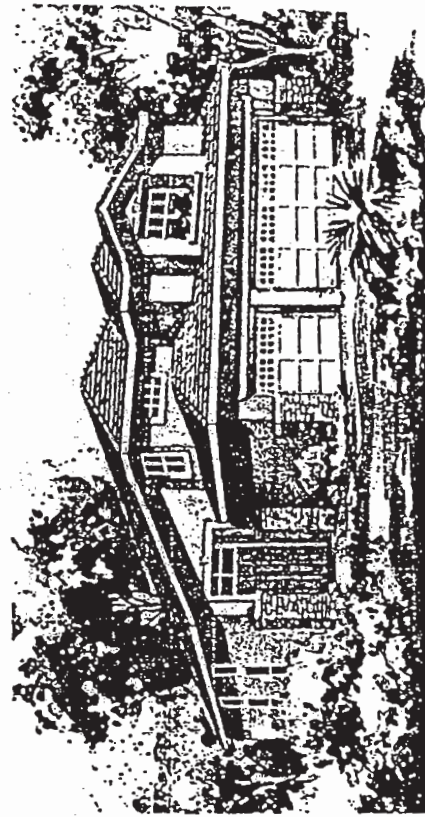
2,163 Square Feet



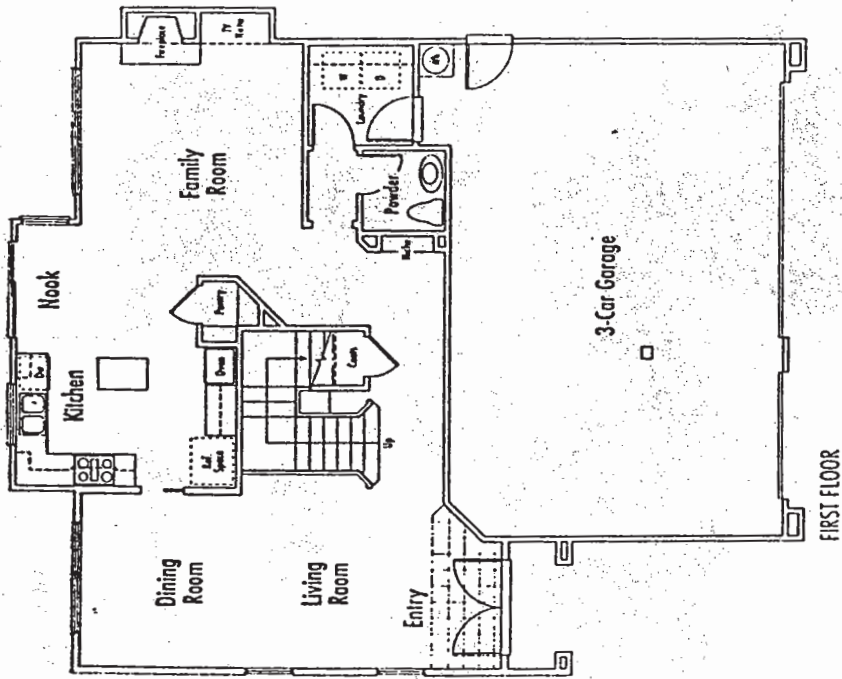
Shore Elevation A



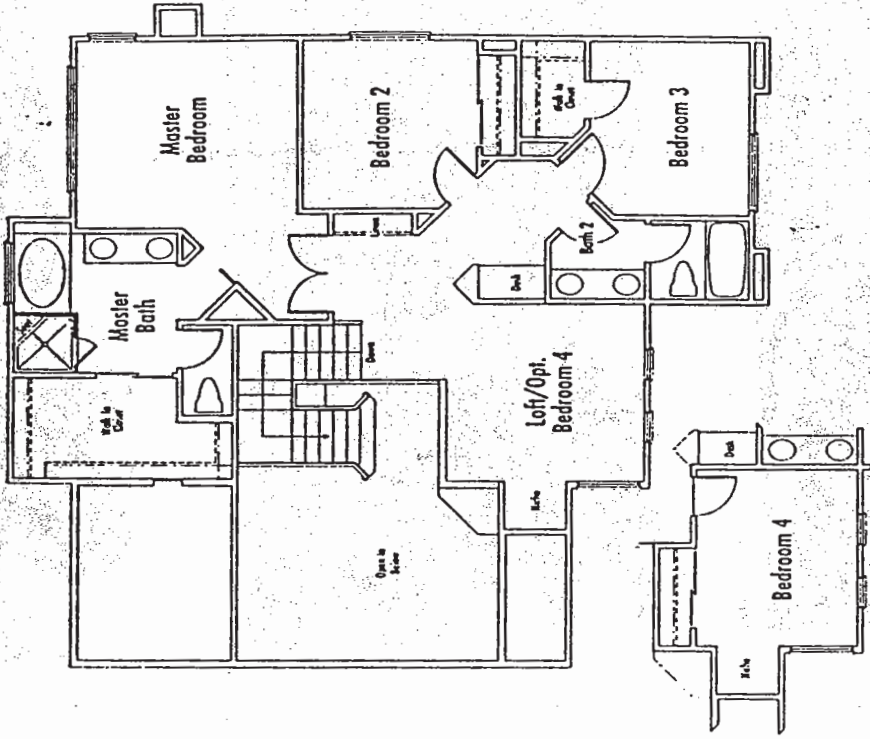
Shore Elevation B



Shore Elevation C



FIRST FLOOR

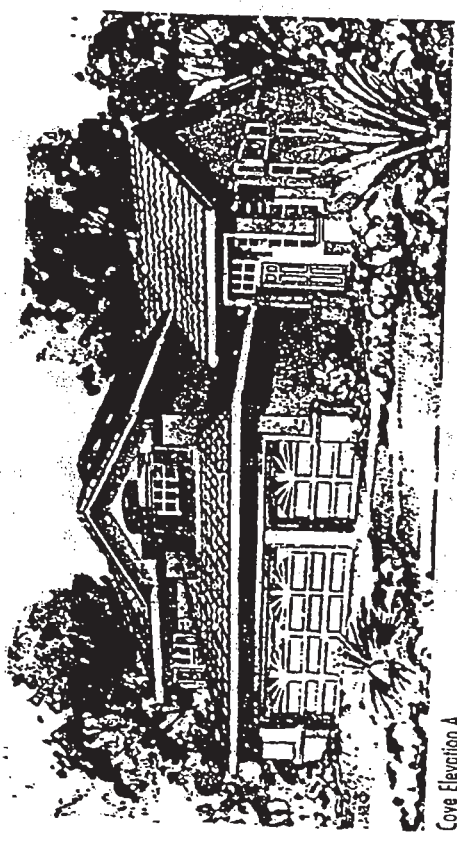


SECOND FLOOR

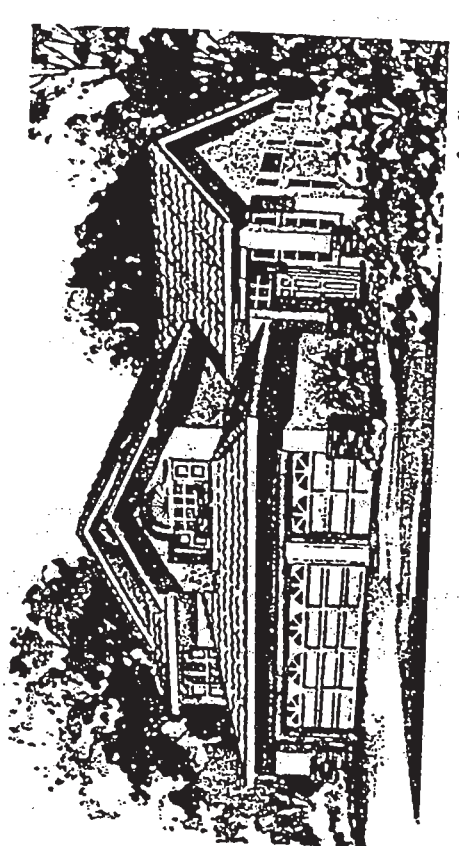
Elegant entertaining and

fun family gatherings are made simple

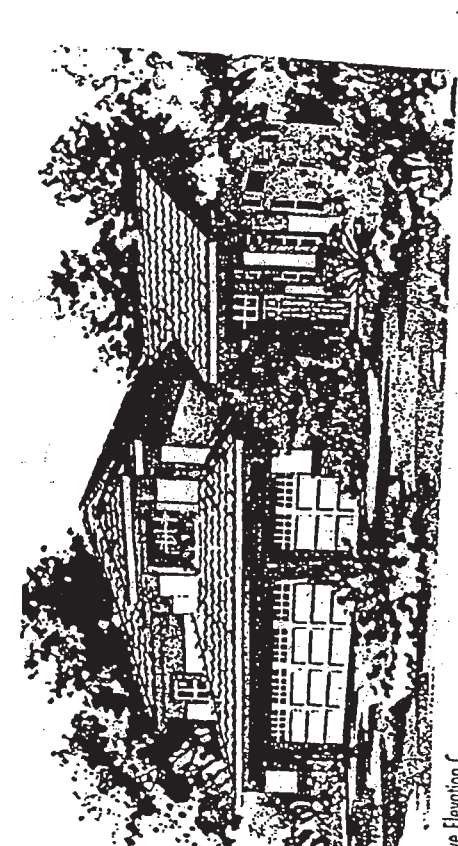
in this conveniently designed home,



Cove Elevation A



Cove Elevation B



Cove Elevation C

3 Bedrooms Plus Den

or Optional 4th Bedroom

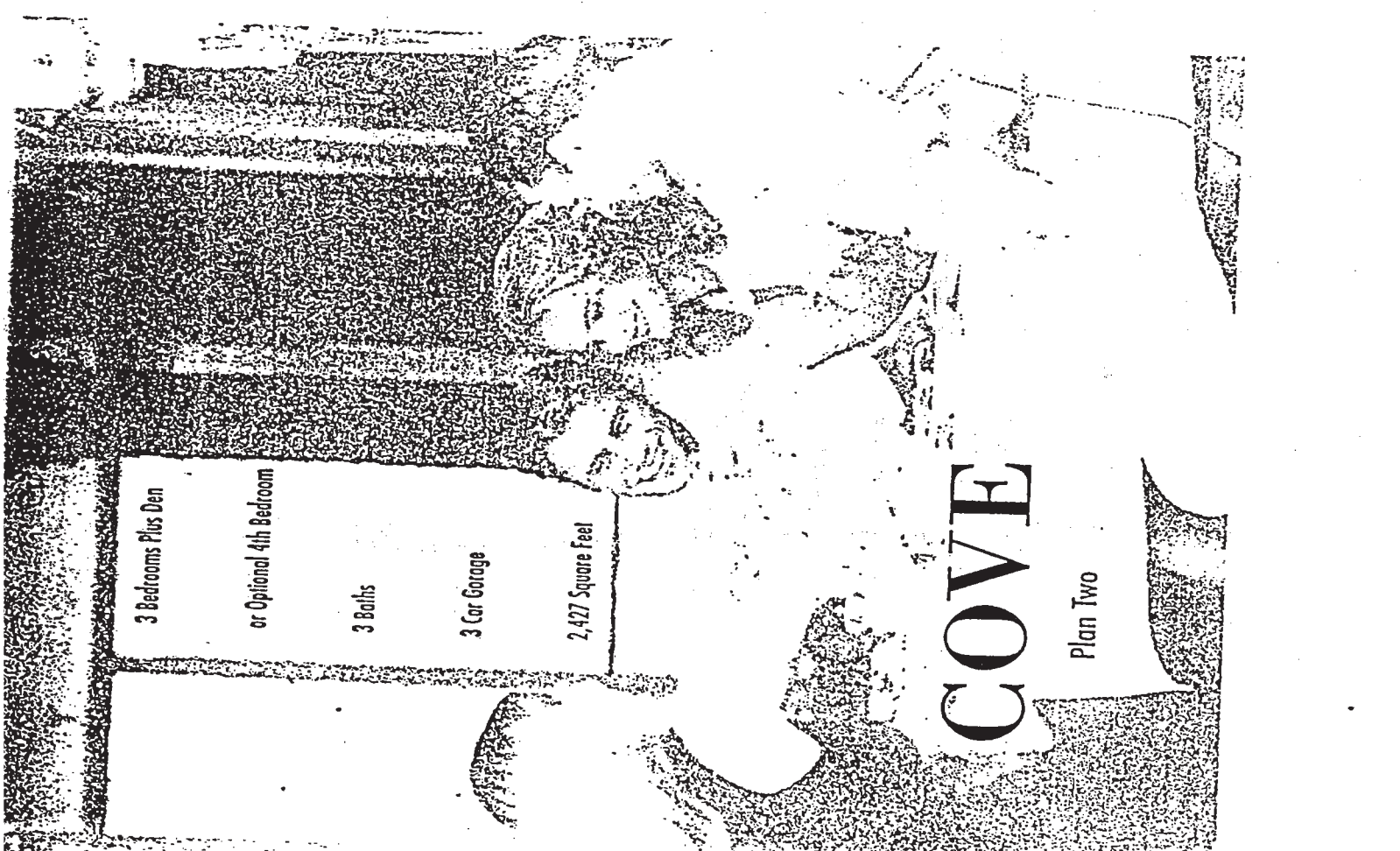
3 Baths

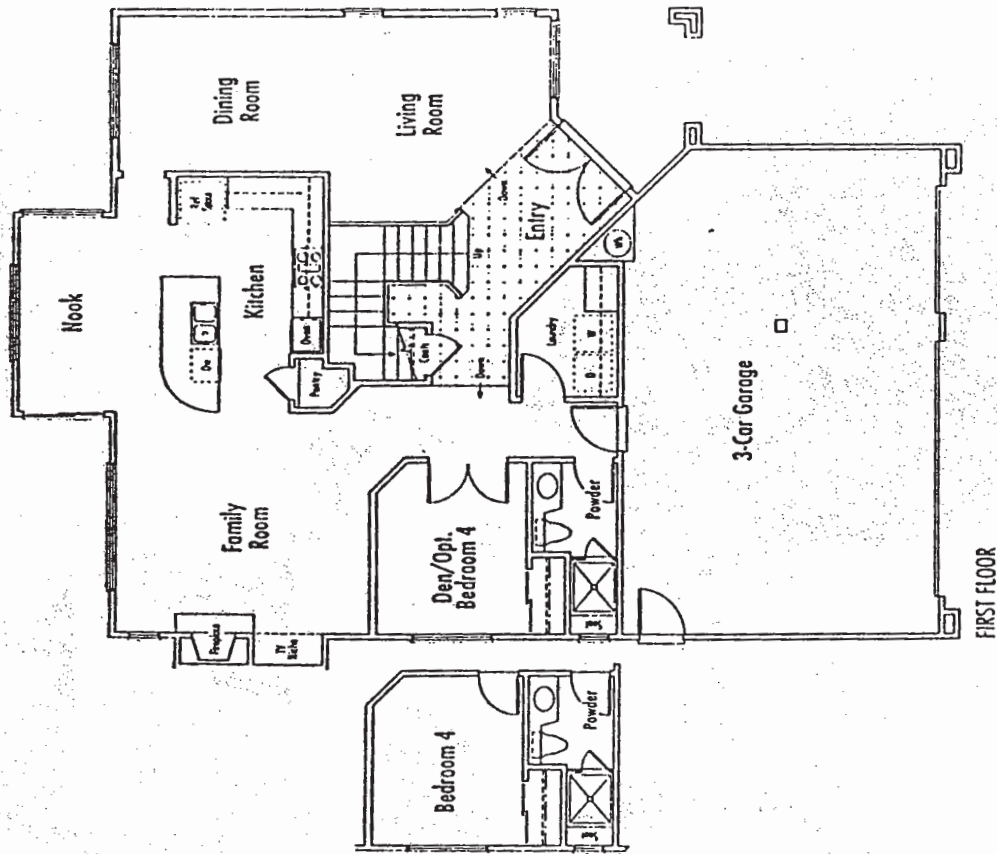
3 Car Garage

2,427 Square Feet

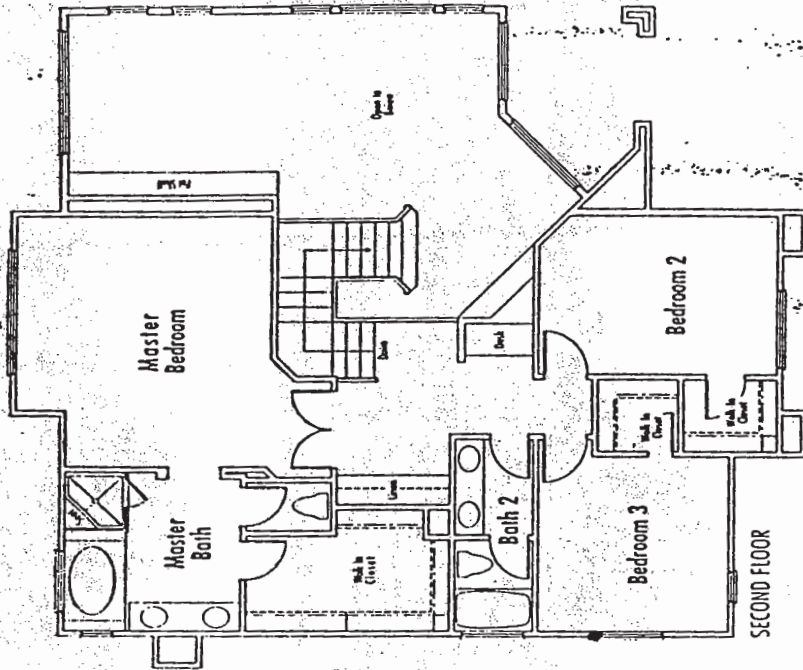
COVE

Plan Two





FIRST FLOOR



SECOND FLOOR

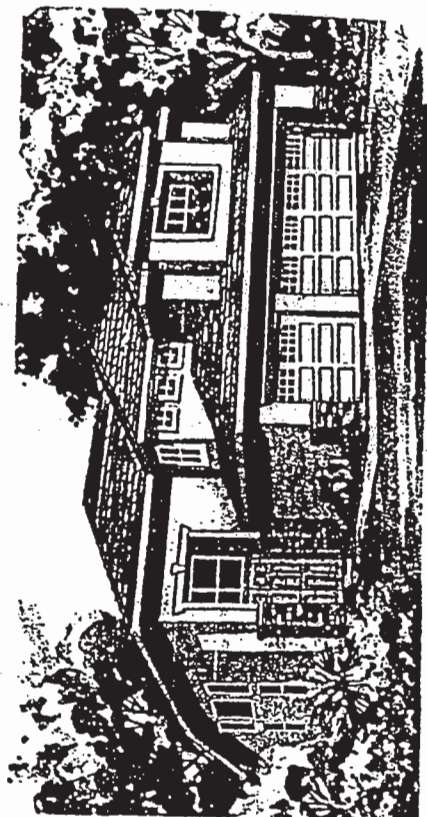
A dramatic double entry and vaulted ceilings introduce guests to the luxurious atmosphere of this spacious home.



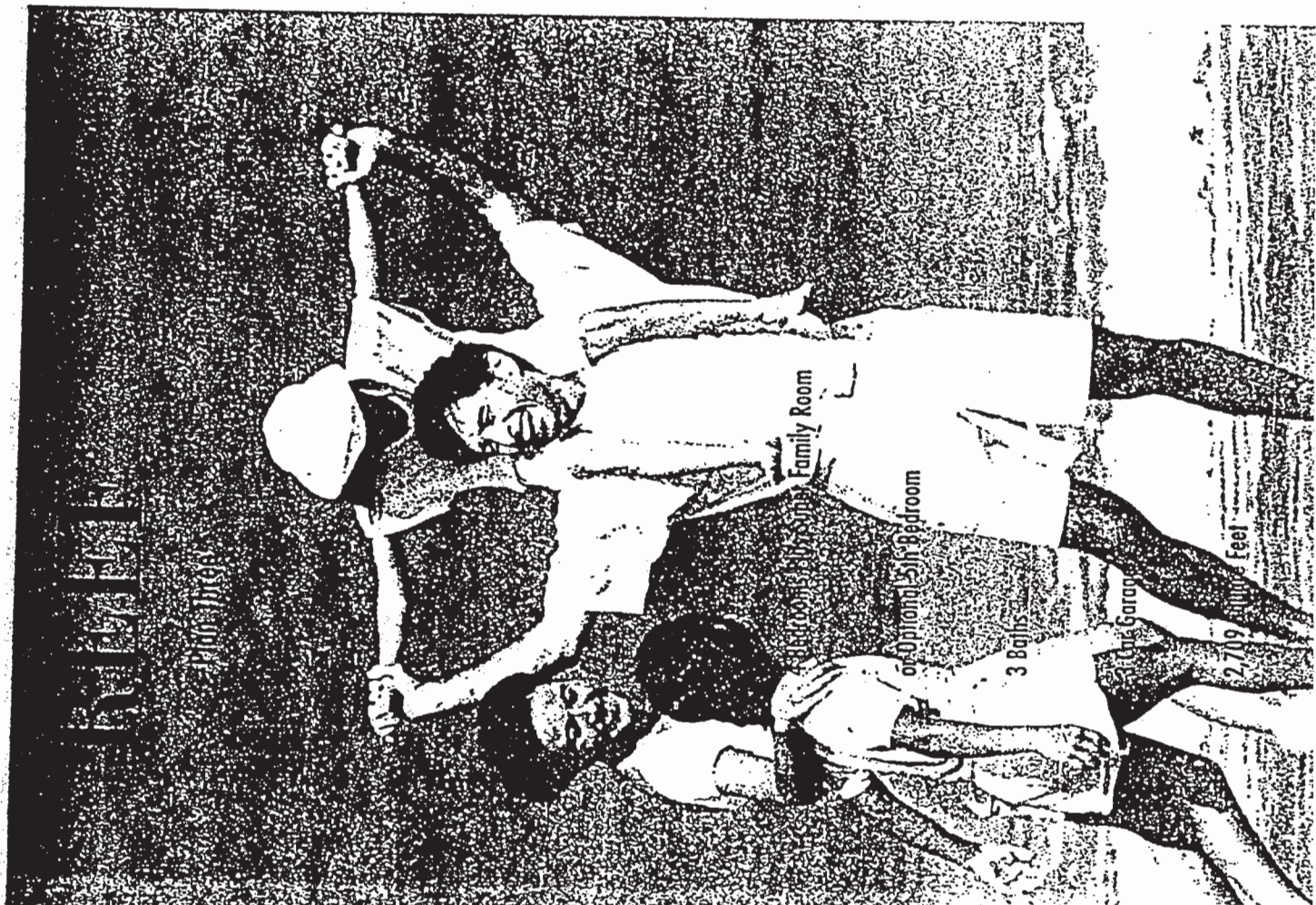
Reef Elevation A



Reef Elevation B



Reef Elevation C



BEACH

Beach House

Family Room

Optional 5th Bedroom

3 Baths

2 Car Garage

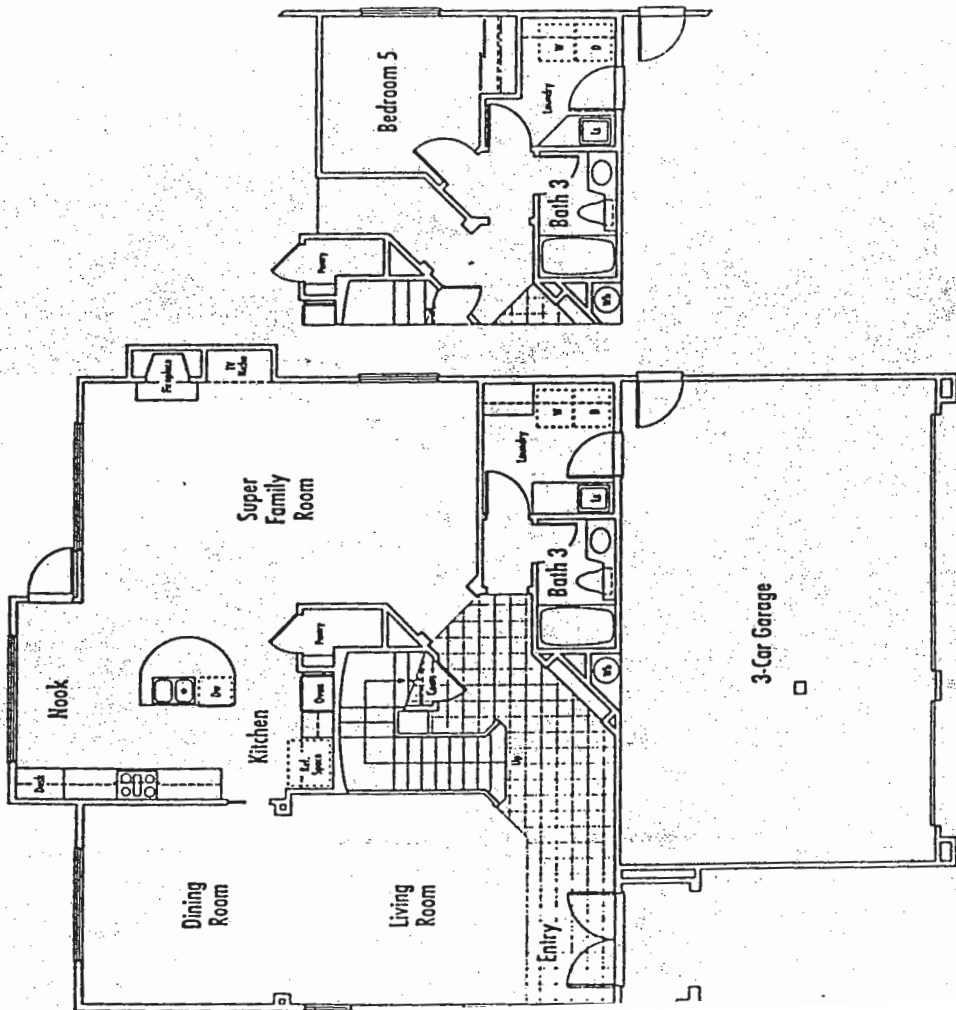
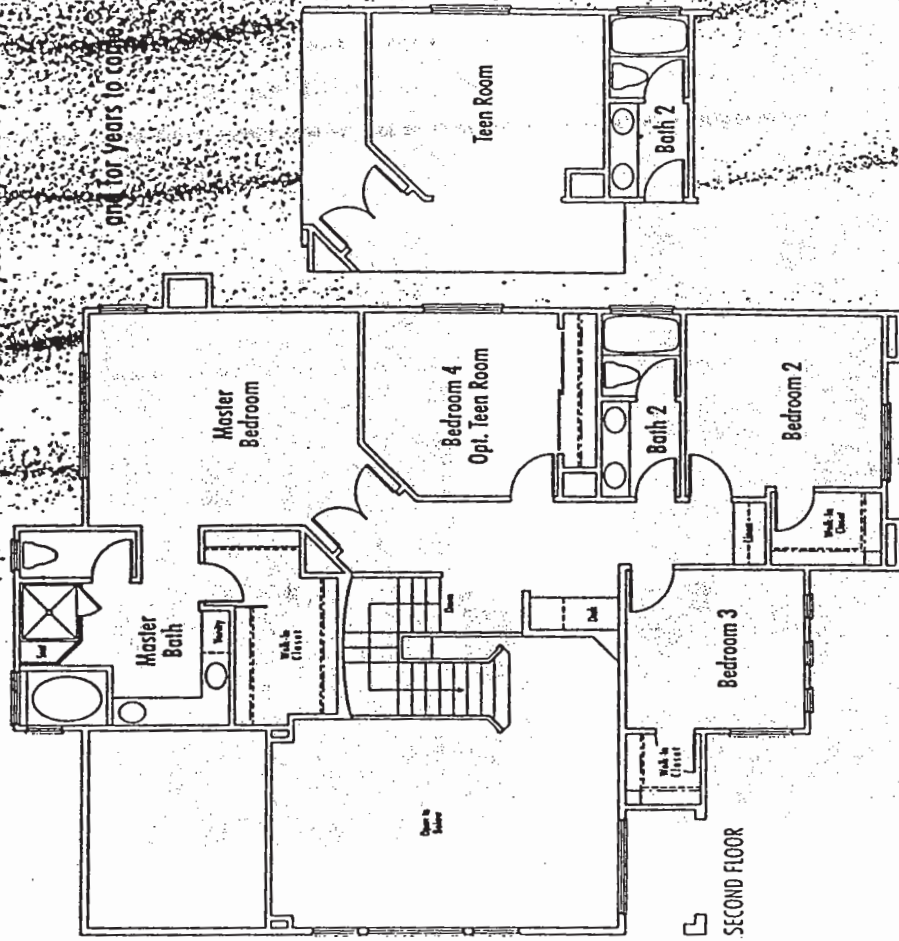
2,719 sq. ft.

A host of flexible options in this expansive floorplan

may be combined to accommodate

your family's life-style today,

and for years to come.



Floorplans and renderings are artist conception and are not to scale.



YOUR ADVANTAGE EXTERIORS

- Classic architecture with custom Mediterranean and European Design
- Designer selected color palettes
- Fire-resistant concrete tile roofs coordinated with exterior design
- Finished three-car garage with metal sectional roll-up doors
- Automatic garage door opener (double-door side)
- Dramatic window styles, including multilined and clerestory
- Front yard landscaping with automatic sprinkler system
- Gas stub at rear of home
- Full rear and side yard fencing

- Quality Moen plumbing fixtures (pressure balanced)
- Ceramic tile countertops in secondary baths
- Pedestal sink in powder bath (plan 1)
- Interior laundry rooms
- Pre-wired for cable television, telephones, security, intercom/music systems
- Prepared for air conditioning
- Smoke detectors

YOUR ADVANTAGE KITCHEN

- Custom oak cabinets, some with adjustable shelves
- Imported Spanish Porcelanosa ceramic tile countertops

K. HOVNANIAN® ADVANTAGE FEATURES

YOUR ADVANTAGE LIVING AREAS

- Beautiful ceramic tile or wood entry flooring
- Designer selected floor coverings
- Spacious living rooms with dramatic vaulted ceilings
- Custom radius wall corners
- Woodburning fireplace in family room
- Custom oak cabinetry
- Entertainment niches in family room
- Built-in computer desk
- Raised-panel interior doors with distinctive polished brass hardware
- Decorative lighting fixtures

- Tilt-out sponge tray at sink
- Gourmet island work space
- Convenient built-in desk (plan 3)
- Lighted walk-in pantries
- General Electric appliances including self-cleaning oven, built-in microwave, Profile gas cooktop and multi-cycle dishwasher
- Cast iron porcelain sink with Moen pull-out spray wand
- Recessed luminous lighting
- Refrigerator area plumbed for ice maker
- Decorator selected ceiling fan with light in nook
- Indirect countertop task lighting

YOUR ADVANTAGE MASTER SUITE

- Spacious walk-in closets
- Imported Spanish Porcelanosa ceramic tile countertops with dual china sinks
- Adult-height custom oak cabinetry
- Built-in vanity (plan 3)
- Luxurious oval tub and separate shower with imported Spanish Porcelanosa ceramic tile surrounds
- Mirrored wardrobe doors (plan 1)

YOUR ADVANTAGE ENERGY SAVING FEATURES

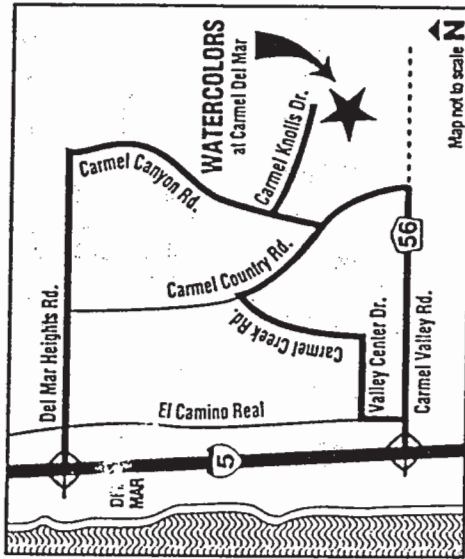
- Dual glazed metal white frame windows for enhanced energy efficiency
- Gas forced air heating with electronic ignition and night set-back controls
- Heat saving glass fireplace doors
- Water-saving plumbing innovations
- Fully-insulated exterior walls and ceilings

YOUR ADVANTAGE OPTIONAL FEATURES

An additional benefit of your K. Hovnanian® Advantage is to be allowed to customize selected areas of your home. The following is a partial list of options offered at Watercolors. Please see your sales representative for additional selections being offered.

- Designer quality upgraded flooring
- Designer selected countertops including ceramic tile, Corian and Corinithian
- Upgraded cabinetry in maple or European white finishes
- Air conditioning

- Security and intercom/music systems
- Upgraded appliances
- Mirrored wardrobe doors
- Central vacuum system



The Builder reserves the right in its sole discretion to make changes or modifications to maps, plans, specifications, materials, features and colors without notice. Prices may be increased or decreased at any time. Product type is subject to availability. Optional features may be included at additional cost subject to construction cut-off dates. All maps, plans, landscaping and elevation renderings are artist conceptions and are not to scale. Carmel Del Mar is an assessment district. Some public facilities may be funded by special tax assessments payable by homeowners. Complete details are available at the Watercolors sales office.



SHORE

Plan One

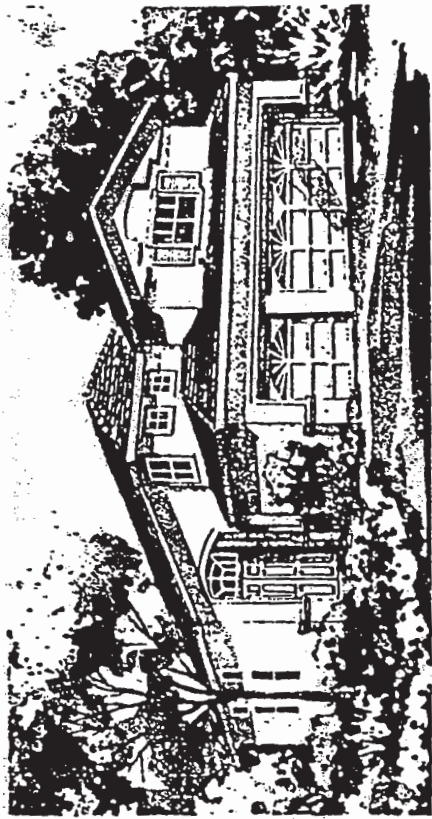


3 Bedrooms Plus Loft
or Optional 4th Bedroom

2 1/2 Baths

3 Car Garage

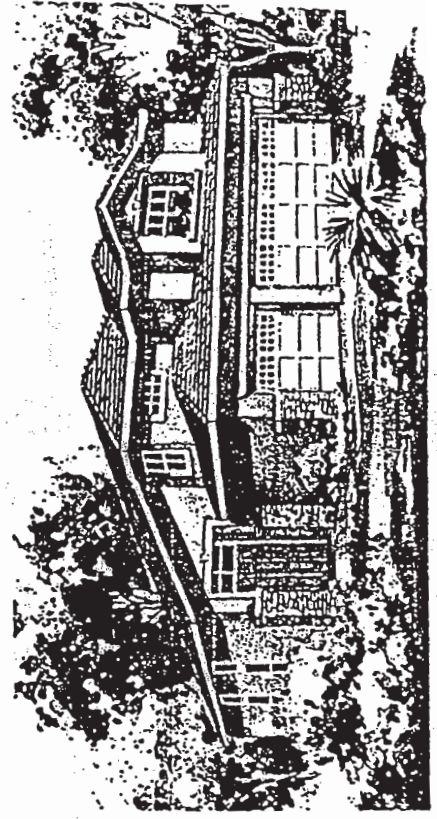
2,163 Square Feet

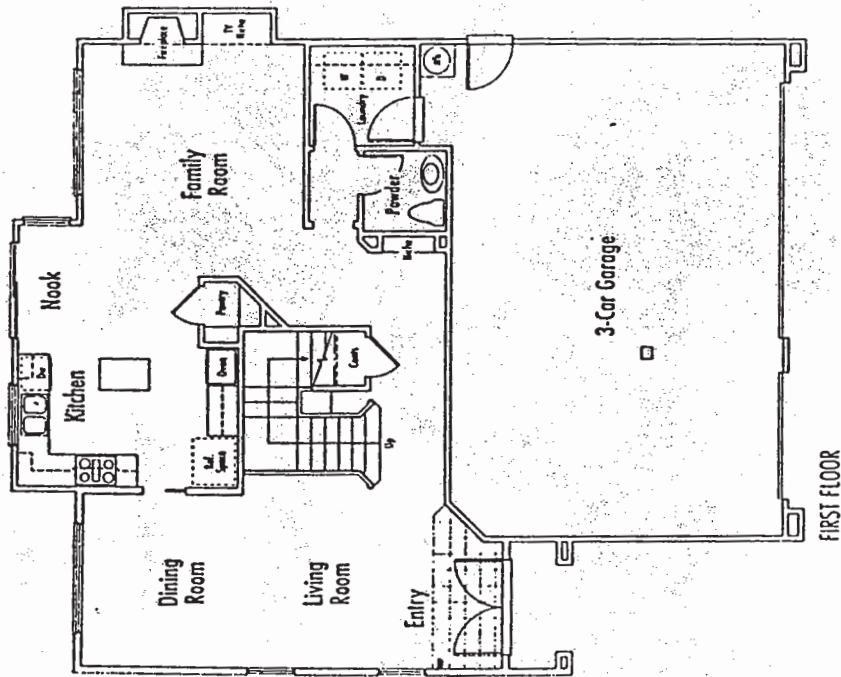


Shore Elevation A

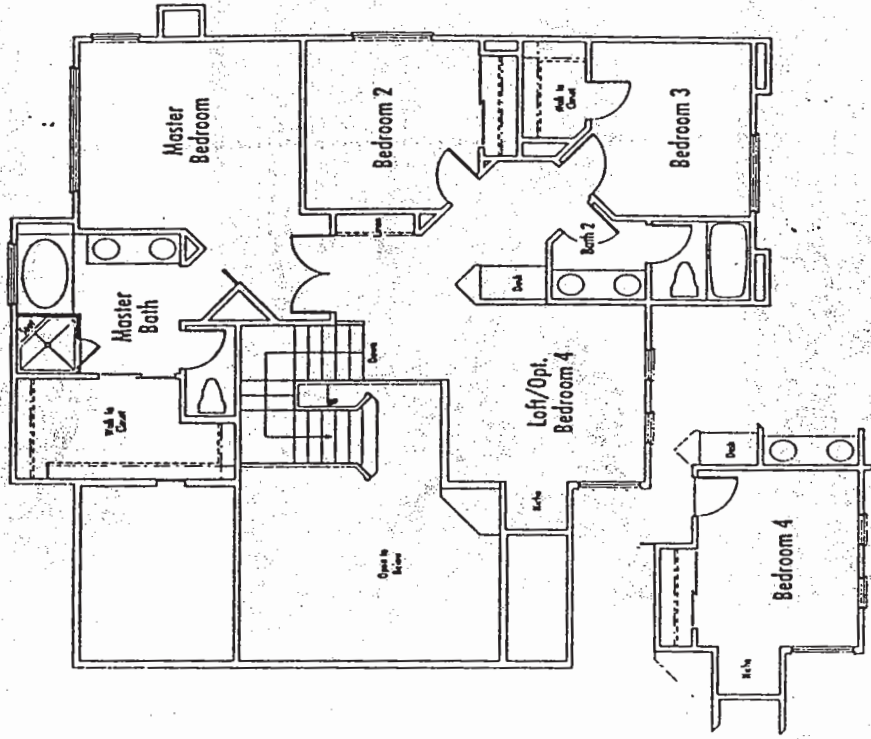


Shore Elevation B





FIRST FLOOR



SECOND FLOOR

Elegant entertaining and

fun family gatherings are made simple
in this conveniently designed home,

3 Bedrooms Plus Den

or Optional 4th Bedroom

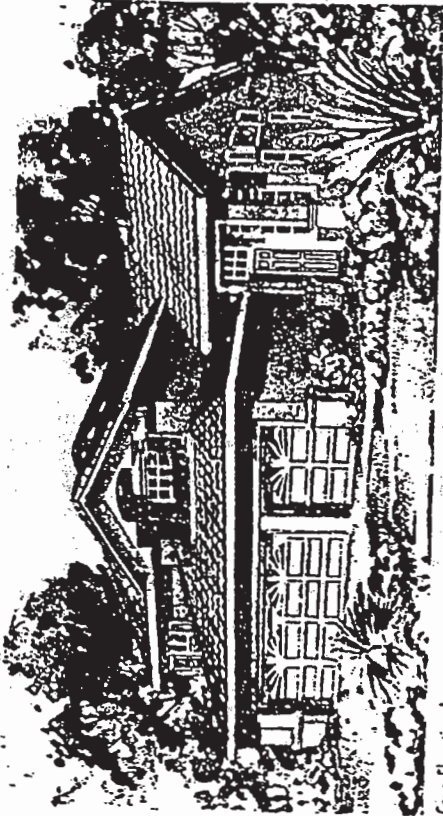
3 Baths

3 Car Garage

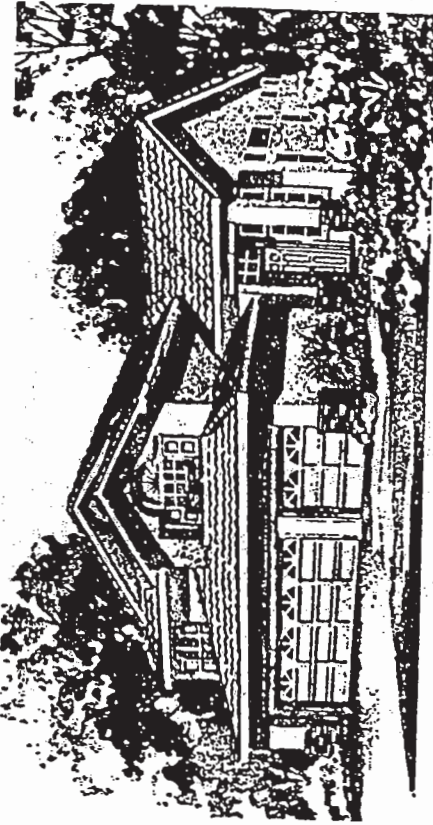
2,427 Square Feet

COVE

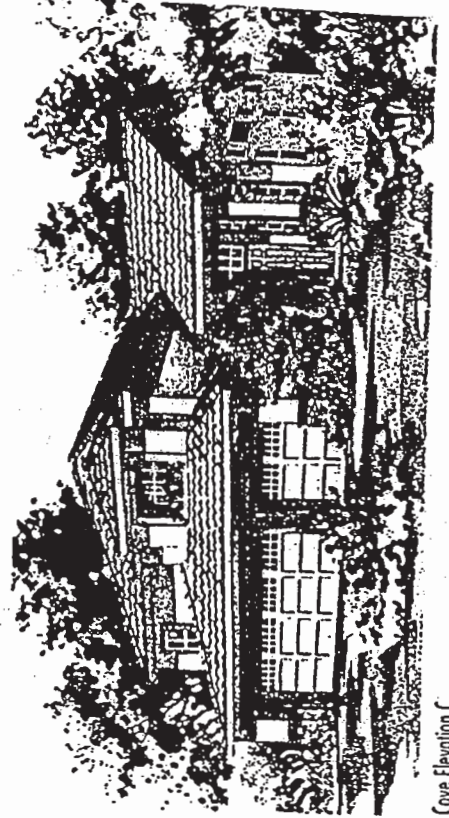
Plan Two



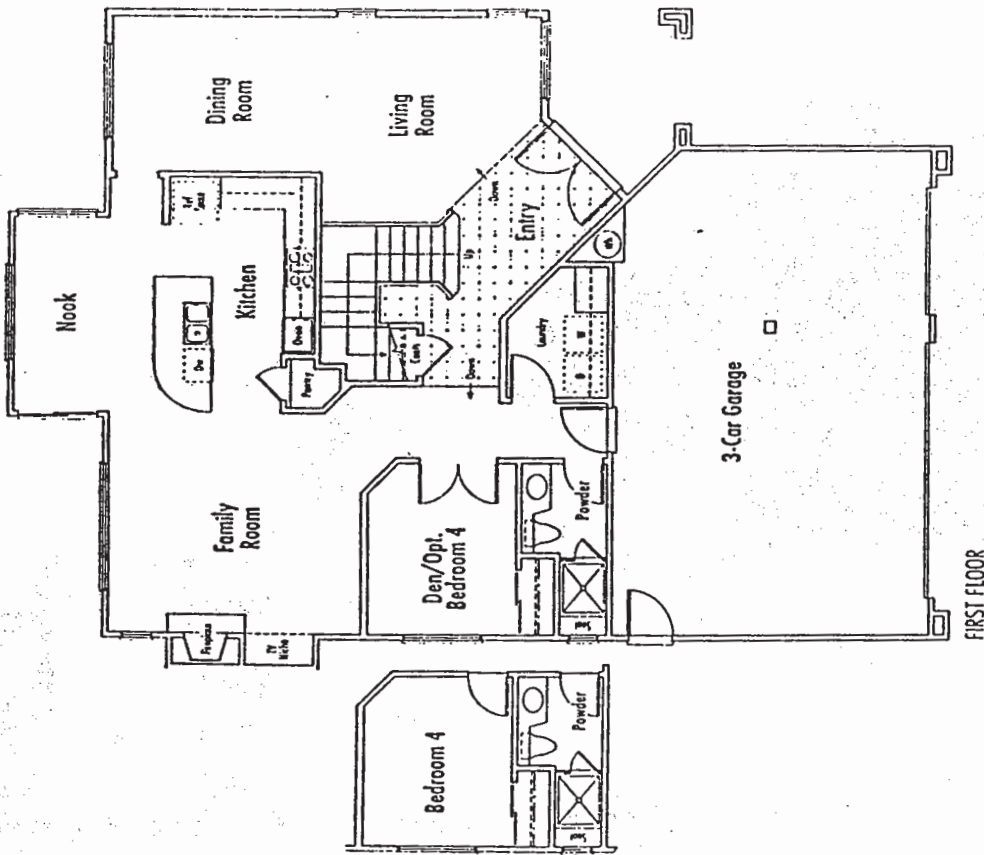
Cove Elevation A



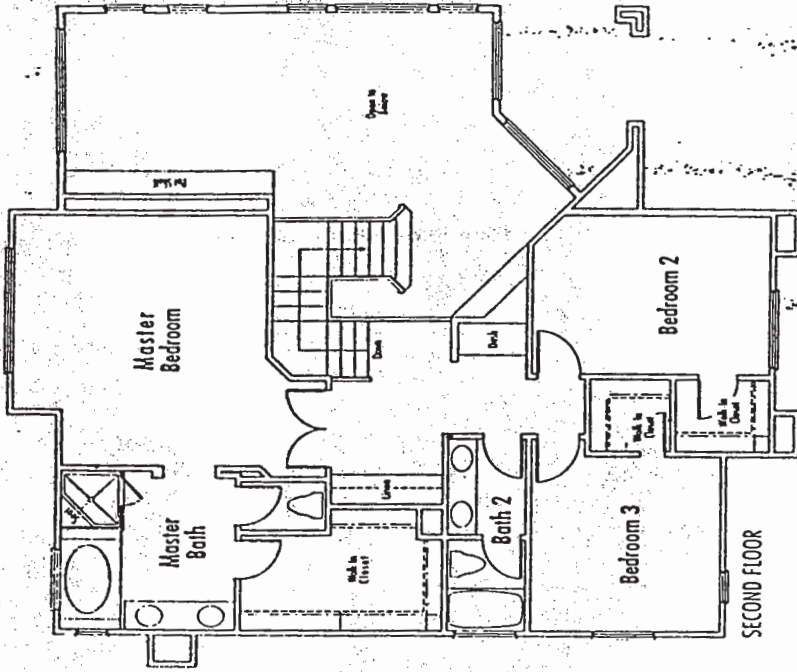
Cove Elevation B



Cove Elevation C



FIRST FLOOR



SECOND FLOOR

A dramatic double entry and vaulted ceilings introduce guests

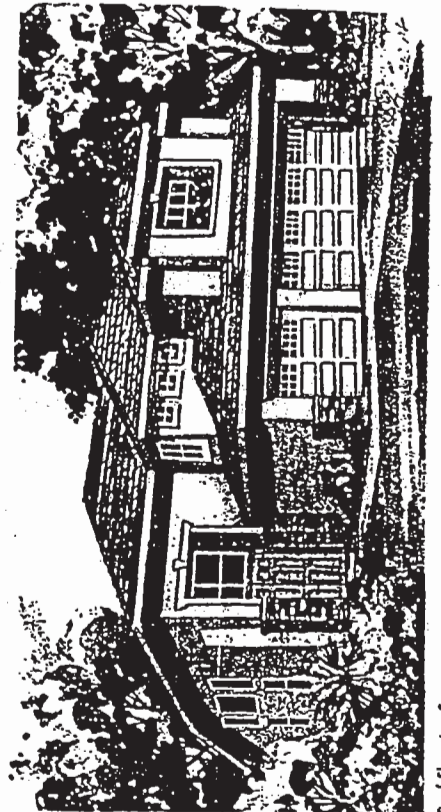
to the luxurious atmosphere of this spacious home.



Reef Elevation A



Reef Elevation B



Reef Elevation C

REEF

Plans from

Masterplan by Suncoast Family Room

Optional 5th Bedroom

3 Baths

The Garage

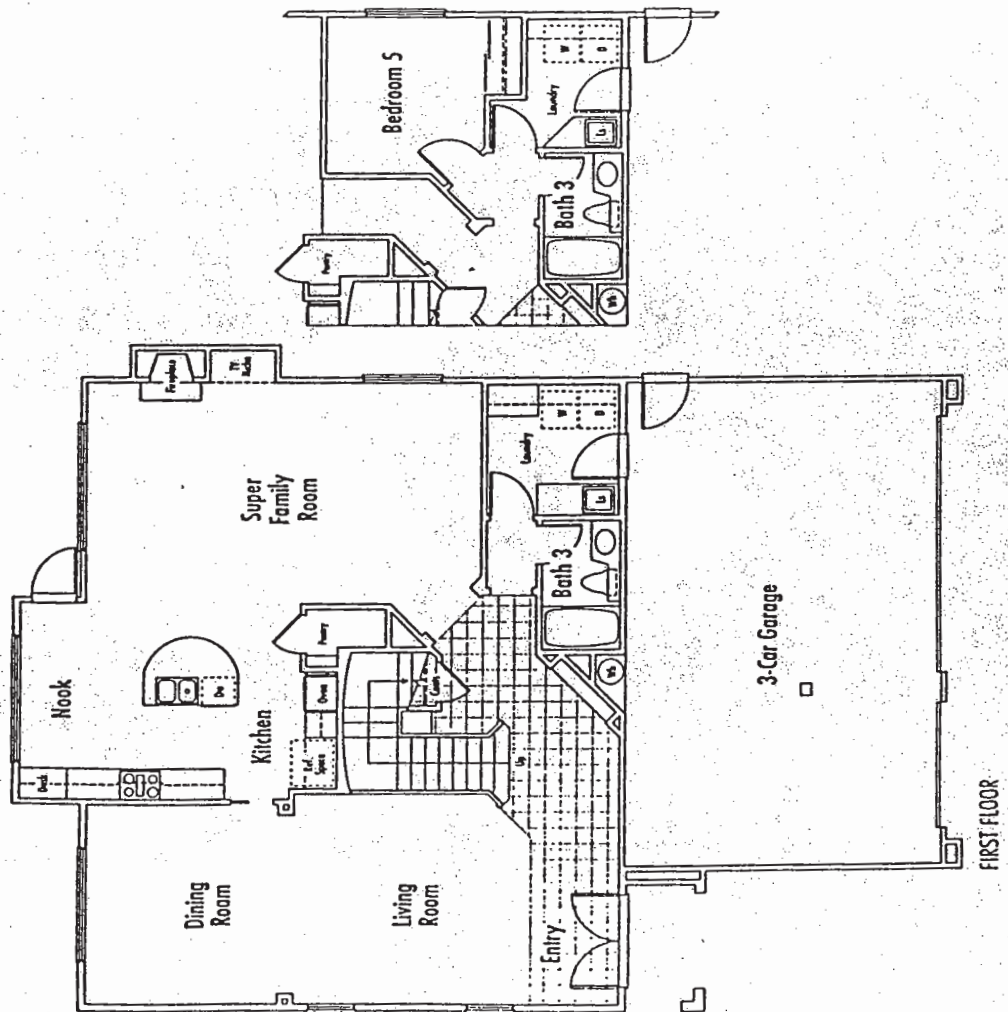
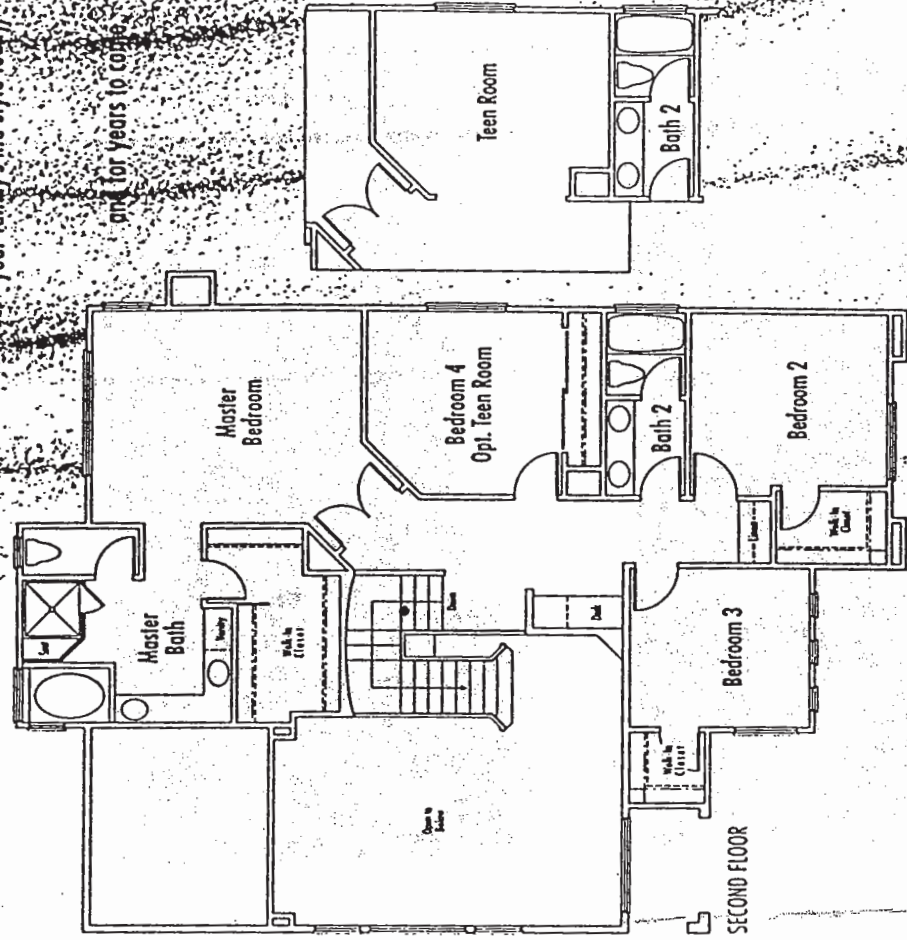
2,719 sq. ft.

A host of flexible options in this expansive floorplan

may be combined to accommodate

your family's life-style today

and for years to come



Floorplans and renderings are artist conception and are not to scale.



YOUR ADVANTAGE EXTERIORS

- Classic architecture with custom Mediterranean and European Design
- Designer selected color palettes
- Fire-resistant concrete tile roofs coordinated with exterior design
- Finished three-car garage with metal sectional roll-up doors
- Automatic garage door opener (double-door side)
- Dramatic window styles, including mullioned and clerestory
- Front yard landscaping with automatic sprinkler system
- Gas stub at rear of home
- Full rear and side yard fencing

- Quality Moen plumbing fixtures (pressure balanced)
- Ceramic tile countertops in secondary baths
- Pedestal sink in powder bath (plan 1)
- Interior laundry rooms
- Pre-wired for cable television, telephones, security, intercom/music systems
- Prepared for air conditioning
- Smoke detectors

YOUR ADVANTAGE KITCHEN

- Custom oak cabinets, some with adjustable shelves
- Imported Spanish Porcelanosa ceramic tile countertops

K. HOVNANIAN® ADVANTAGE FEATURES

YOUR ADVANTAGE LIVING AREAS

- Beautiful ceramic tile or wood entry flooring
- Designer selected floor coverings
- Spacious living rooms with dramatic vaulted ceilings
- Custom radius wall corners
- Woodburning fireplace in family room
- Custom oak cabinetry
- Entertainment niches in family room
- Built-in computer desk
- Raised-panel interior doors with distinctive polished brass hardware
- Decorative lighting fixtures
- Tilt-out sponge tray at sink
- Gourmet island work space
- Convenient built-in desk (plan 3)
- Lighted walk-in pantries
- General Electric appliances including self-cleaning oven, built-in microwave, Profile gas cooktop and multi-cycle dishwasher
- Cast iron porcelain sink with Moen pull-out spray wand
- Recessed luminous lighting
- Refrigerator area plumbed for ice maker
- Decorator selected ceiling fan with light in nook
- Indirect countertop task lighting

YOUR ADVANTAGE MASTER SUITE

- Spacious walk-in closets
- Imported Spanish Porcelanosa ceramic tile countertops with dual china sinks
- Adult-height custom oak cabinetry
- Built-in vanity (plan 3)
- Luxurious oval tub and separate shower with imported Spanish Porcelanosa ceramic tile surrounds
- Mirrored wardrobe doors (plan 1)

YOUR ADVANTAGE ENERGY SAVING FEATURES

- Dual glazed metal white frame windows for enhanced energy efficiency
- Gas forced air heating with electronic ignition and night set-back controls

- Heat saving glass fireplace doors

- Water-saving plumbing innovations

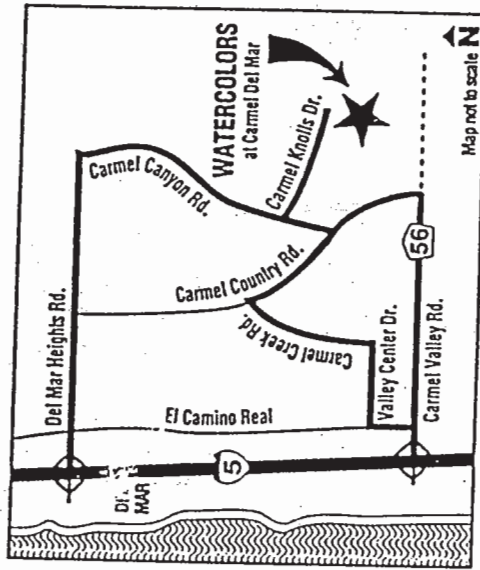
- Fully-insulated exterior walls and ceilings

YOUR ADVANTAGE OPTIONAL FEATURES

An additional benefit of your K. Hovnanian® Advantage is to be allowed to customize selected areas of your home. The following is a partial list of options offered at Watercolors. Please see your sales representative for additional selections being offered.

- Designer quality upgraded flooring
- Designer selected countertops including ceramic tile, Corian and Corinthan
- Upgraded cabinetry in maple or European white finishes
- Air conditioning

- Security and intercom/music systems
- Upgraded appliances
- Mirrored wardrobe doors
- Central vacuum system



The Builder reserves the right in its sole discretion to make changes or modifications to maps, plans, specifications, materials, features and colors without notice. Prices may be increased or decreased at any time. Product type is subject to availability. Optional features may be included at additional cost subject to construction cut-off dates. All maps, plans, landscaping and elevation renderings are artists' conceptions and are not to scale. Carmel Del Mar is an assessment district. Some public facilities may be funded by special tax assessments payable by homeowners. Complete details are available at the Watercolors sales office.

