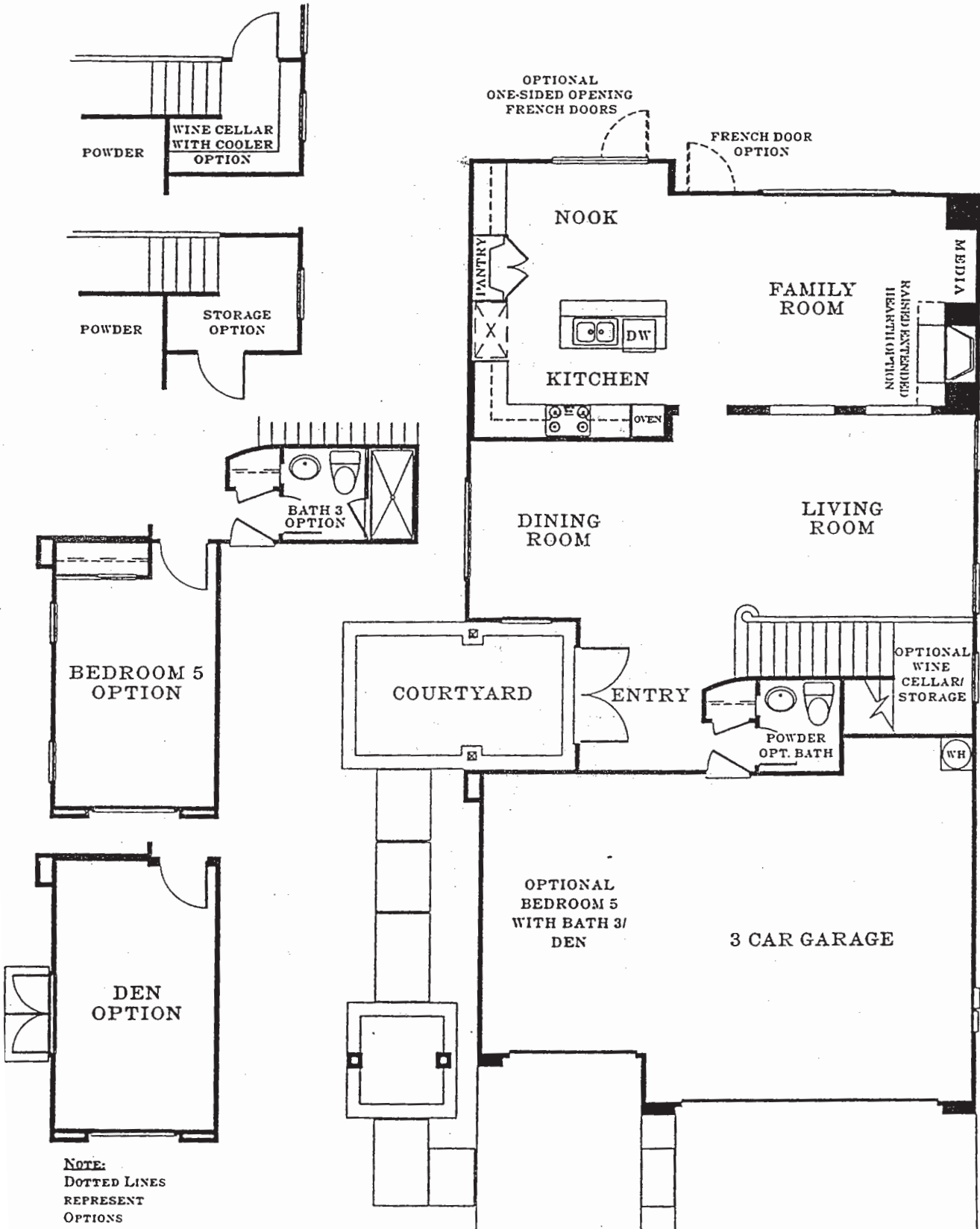


SeaRidge

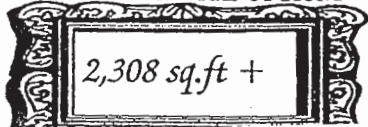


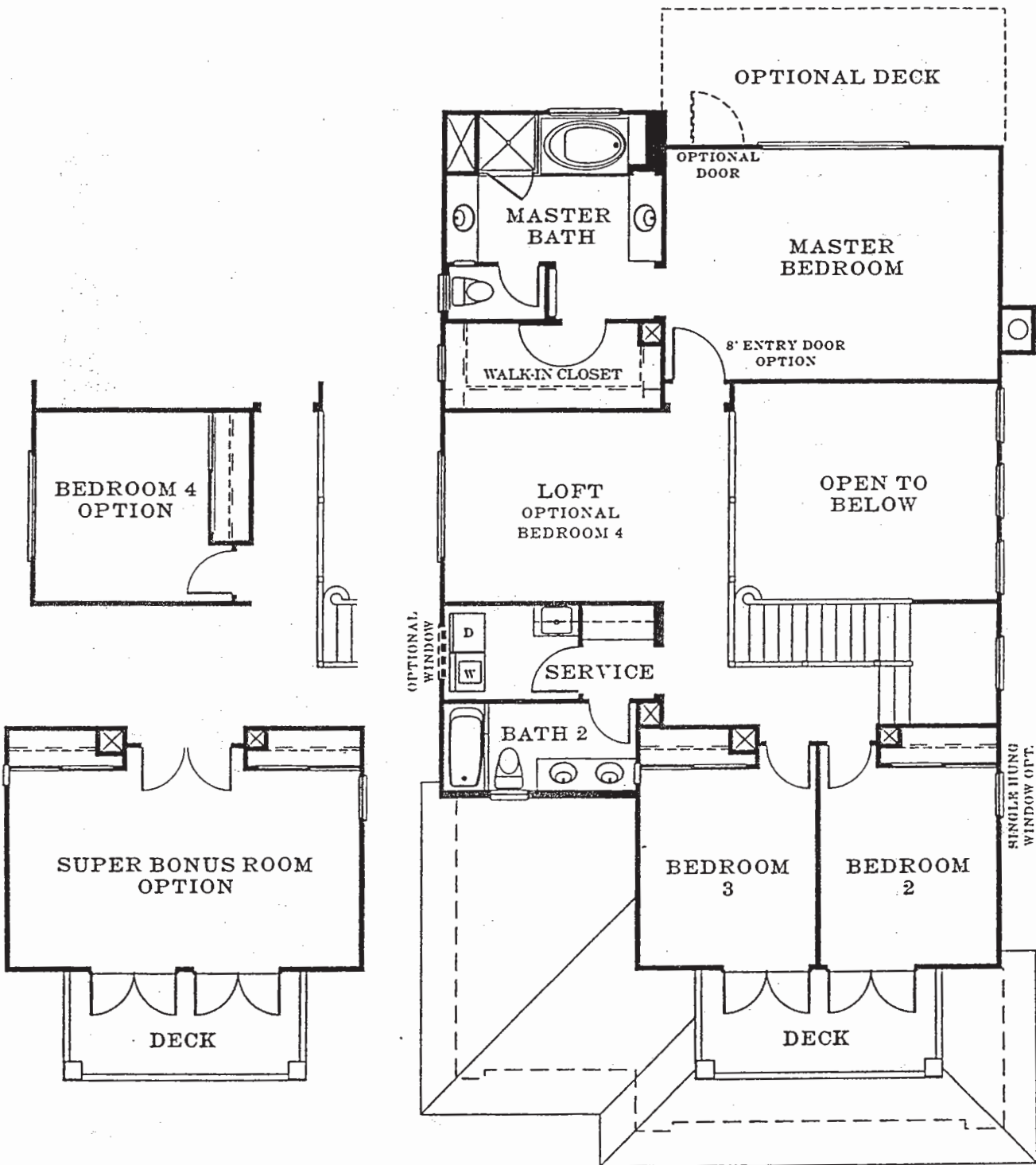
NOTE:
 DOTTED LINES
 REPRESENT
 OPTIONS

SeaRidge

PLAN 1

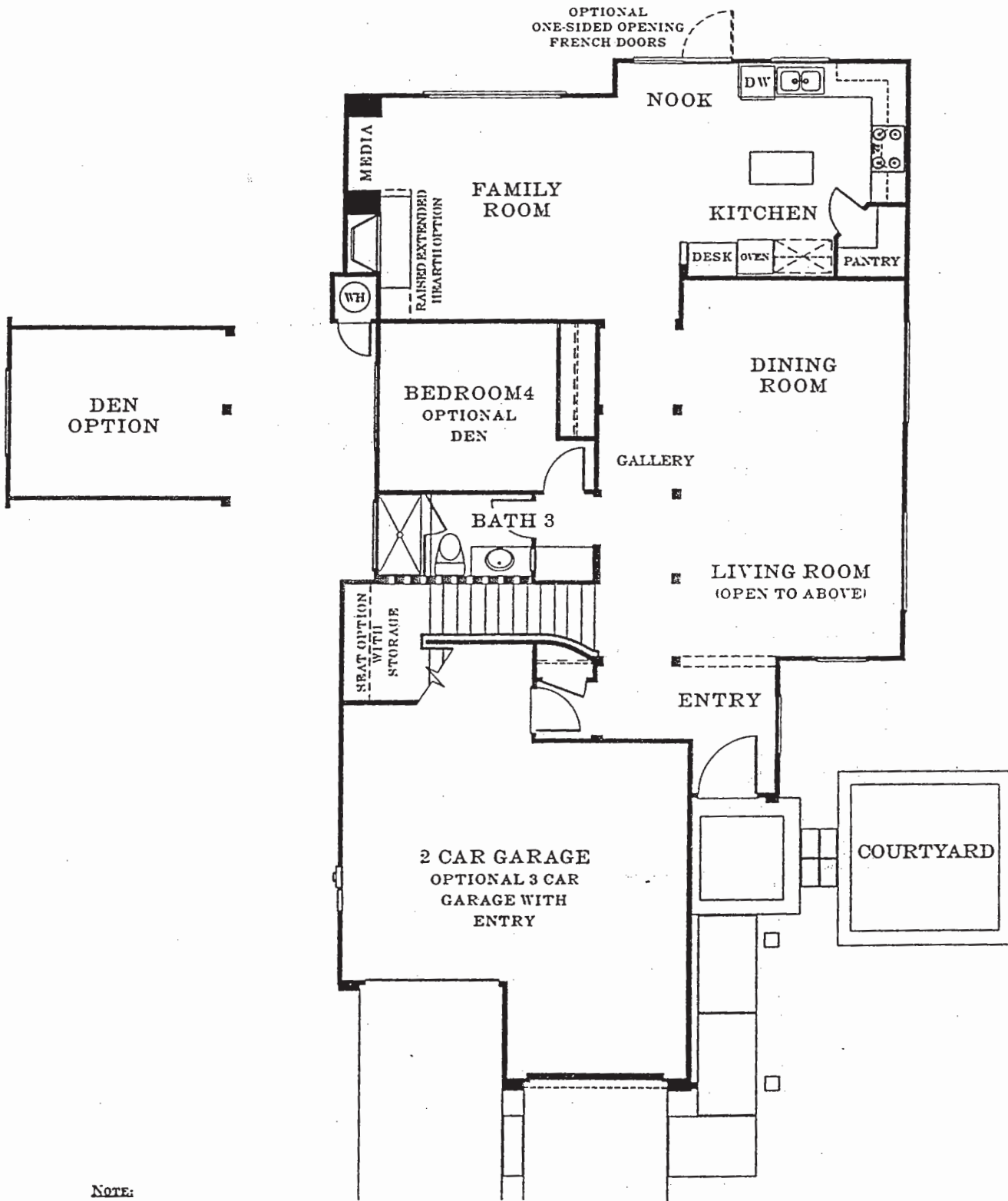
FIRST FLOOR WITH OPTIONS





NOTE:
 DOTTED LINES
 REPRESENT
 OPTIONS

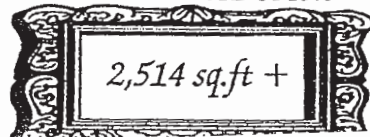
SeaRidge
 PLAN 1
 SECOND FLOOR WITH OPTION

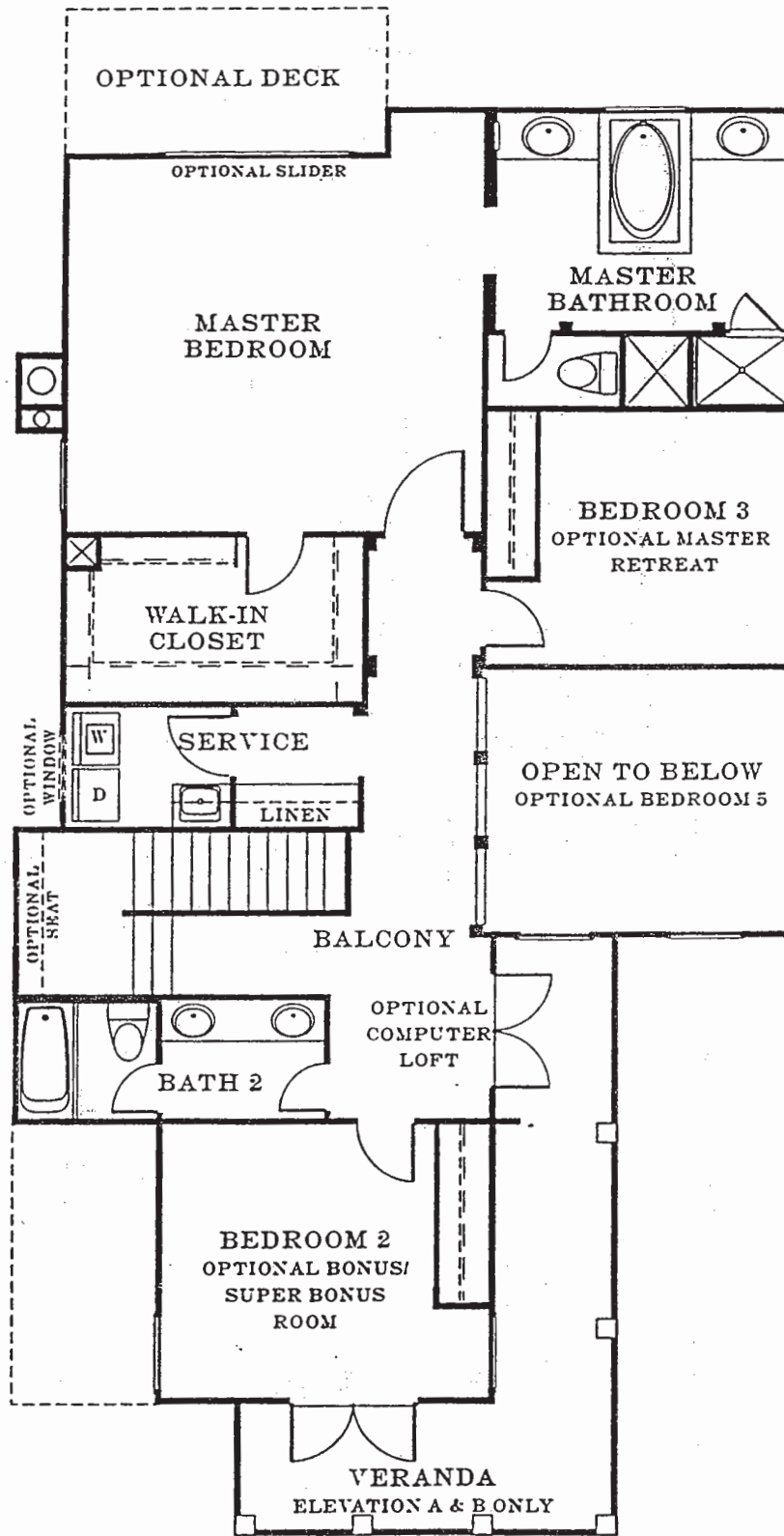


NOTE:
 DOTTED LINES
 REPRESENT
 OPTIONS

SeaRidge

PLAN 2 (REVERSED)
 FIRST FLOOR WITH OPTION

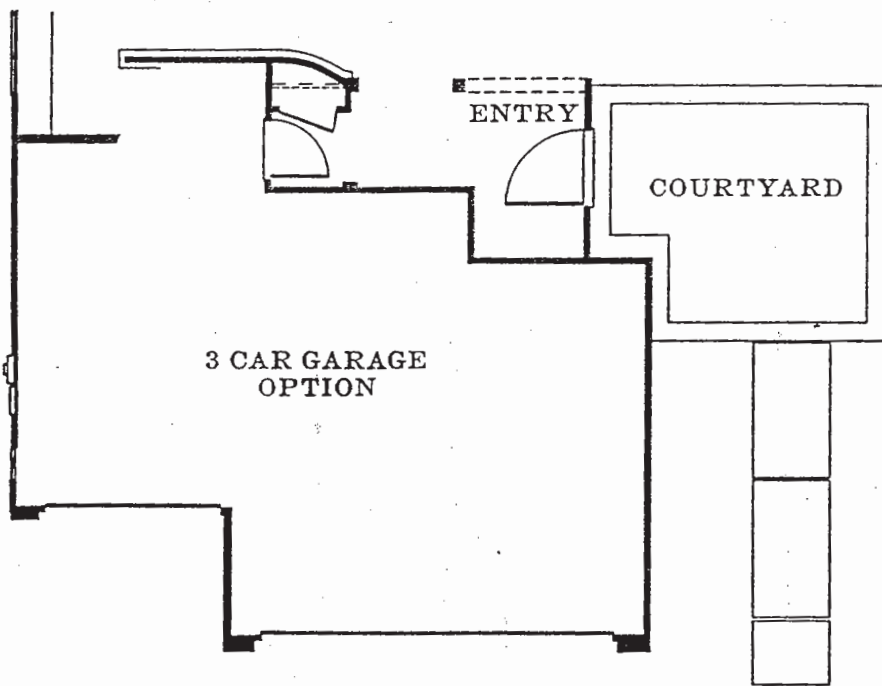




NOTE:
 DOTTED LINES
 REPRESENT
 OPTIONS

SeaRidge

PLAN 2 (REVERSED)
 SECOND FLOOR

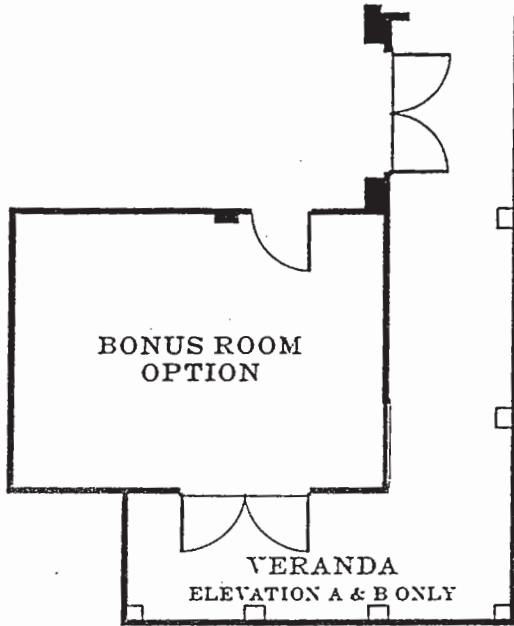


SeaRidge
PLAN 2 (REVERSED)
FIRST FLOOR OPTION

MASTER
BEDROOM

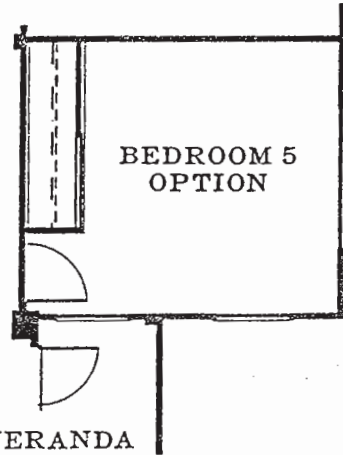
RETREAT
OPTION

OPEN



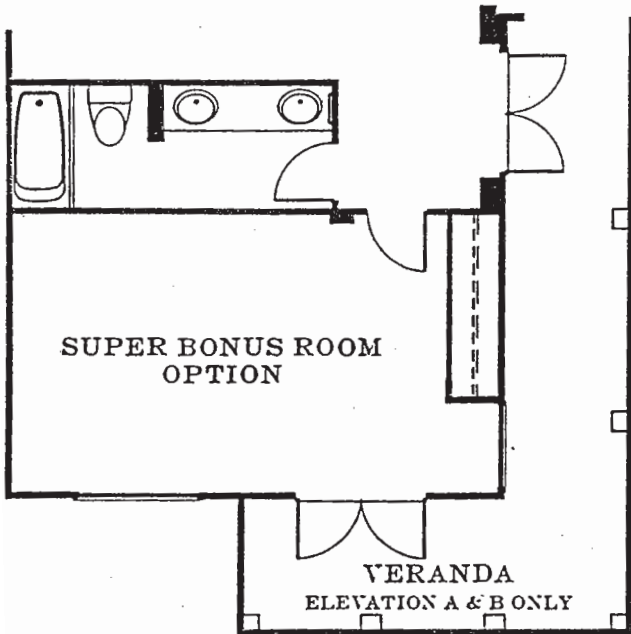
BONUS ROOM
OPTION

VERANDA
ELEVATION A & B ONLY



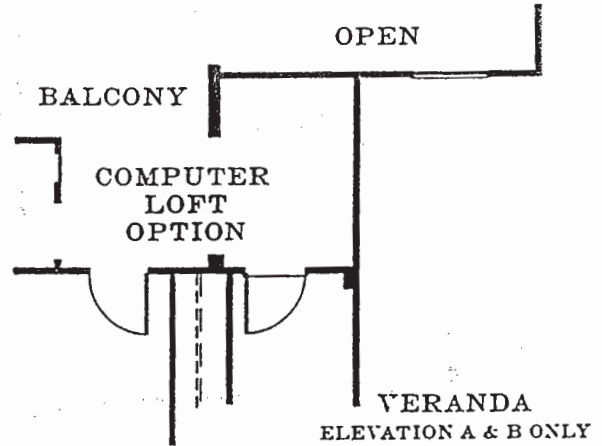
BEDROOM 5
OPTION

VERANDA



SUPER BONUS ROOM
OPTION

VERANDA
ELEVATION A & B ONLY



OPEN

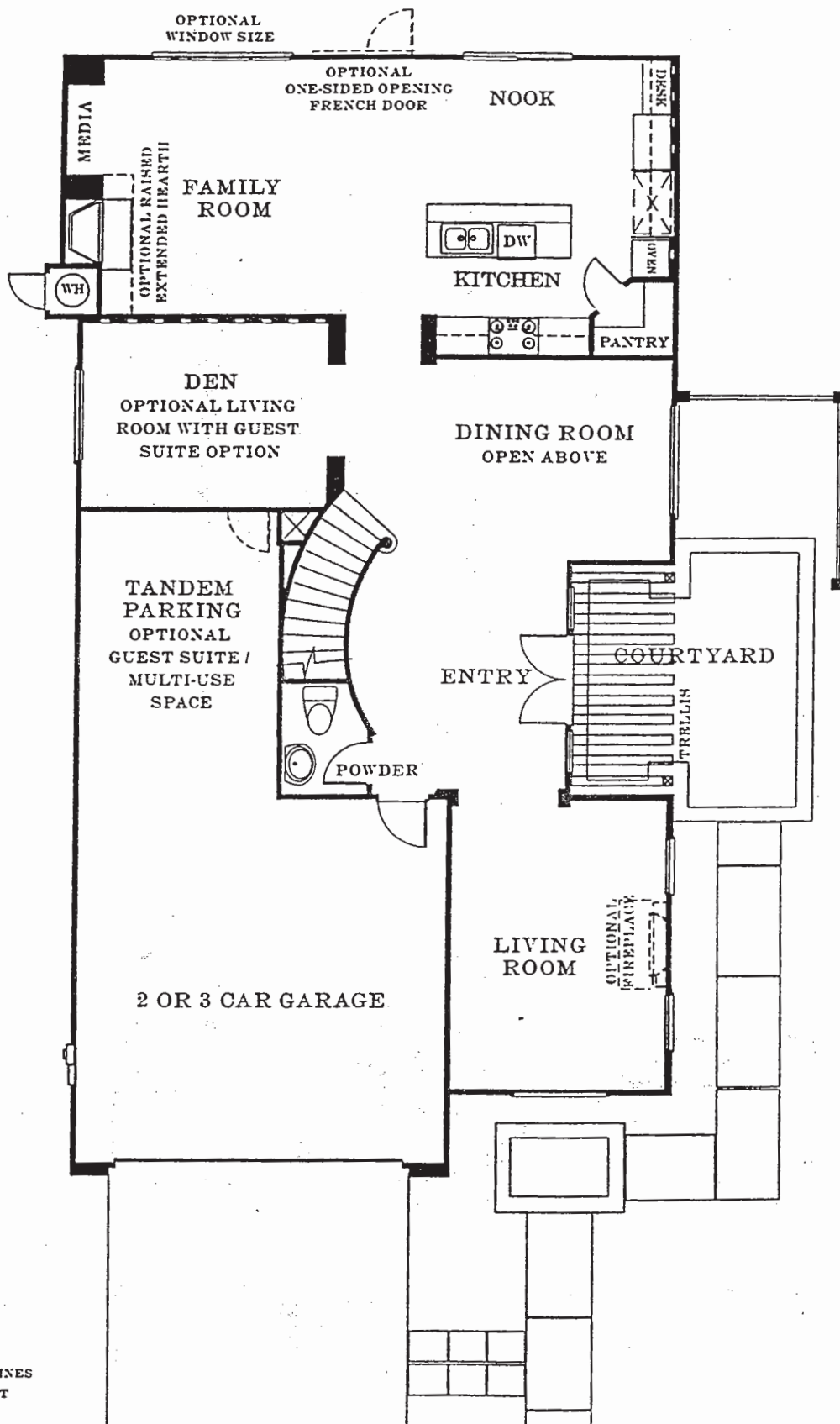
BALCONY

COMPUTER
LOFT
OPTION

VERANDA
ELEVATION A & B ONLY

SeaRidge

PLAN 2 (REVERSED)
SECOND FLOOR OPTIONS

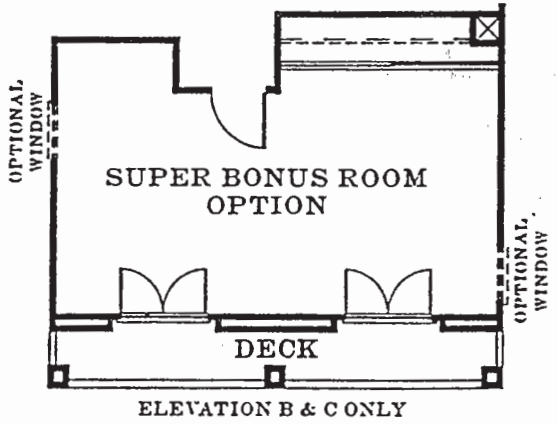
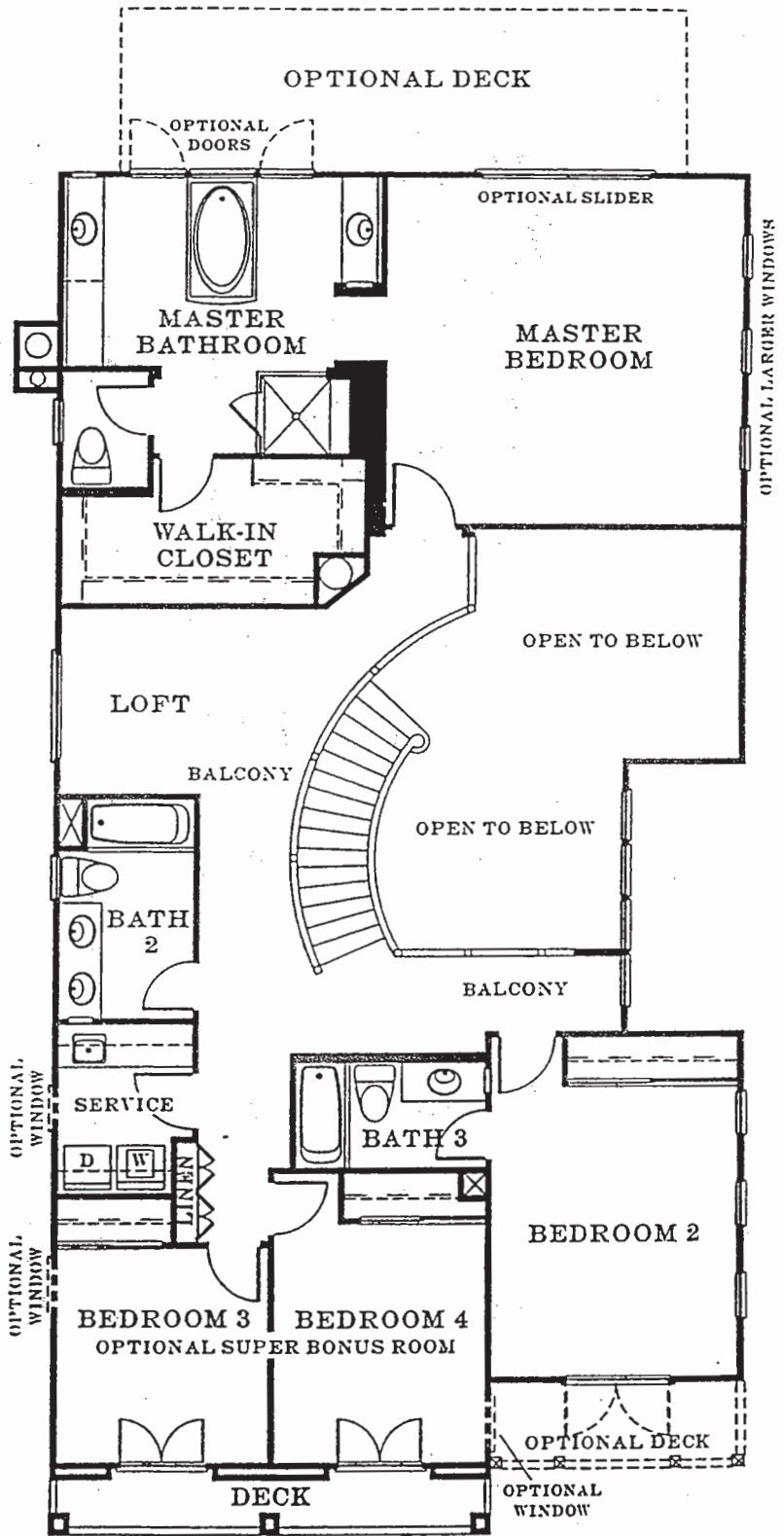


SeaRidge

PLAN 3 (REVERSED)

FIRST FLOOR

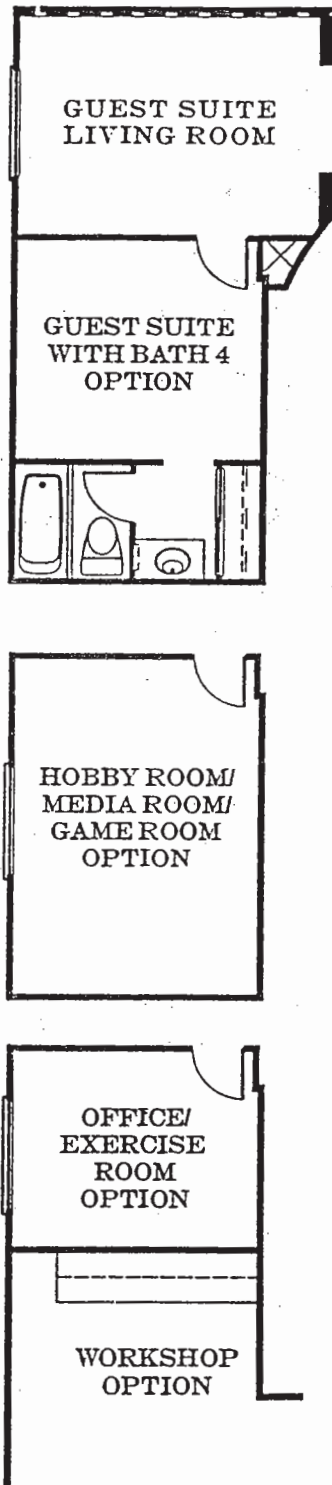
2,909 sq.ft +



ELEVATION B & C ONLY

ELEVATION B & C ONLY

SeaRidge
 PLAN 3 (REVERSED)
 SECOND FLOOR WITH OPTION



NOTE:
 DOTTED LINES
 REPRESENT
 OPTIONS

SeaRidge
 PLAN 3 (REVERSED)
 FIRST FLOOR OPTIONS

{ Standard Features }

Distinctive coastal-style homes

Spectacular ocean & city light views in selected residences

Inviting balconies and decks available on all elevations, offering superb outdoor living and taking full advantage of the spectacular ocean and city light views

Rain gutters and downspout (selected areas)

Convenient, economical gas connection for barbeque

The finest dual-glazed vinyl clad windows

Garage fully finished with drywall

EXCEPTIONAL INTERIORS

12" x 12" ceramic tile flooring in entry

The comfort of plush long-wear carpet in a variety of stylish colors

Category 5 wiring enabling high-speed internet access and full home networking capability

Wood burning fireplaces in selected rooms

Silent electrical light switches by "Decora"

Separate interior laundry space with abundant cabinet space and ceramic tile countertop

50 gallon gas hot water heater, for a hot shower at every shower

Pre-wire for standard telephone lines and cable television in all bedrooms, kitchen, family room, loft or den

ELEGANT KITCHENS

Premium appliances by Whirlpool® in your choice of white or black

30" gas, 4 burner cooktop.

Whirlpool® Quiet Wash Plus, 5-cycle dishwasher

Whirlpool® Accubake, EZ-touch 300 electronic oven and timer

Whirlpool® gold microwave 1.9 cu. ft.

Euro design cabinets with white matte finish and raised panel doors

Walk-in Pantry (plan 2 & 3)

Attractive 6" x 6" ceramic tile countertops

Insinkerator® heavy-duty garbage disposal

GREAT MASTERS

Spacious dressing area with walk-in closets

Clean, 4" x 4" ceramic tile counters

Relaxing soaking tub with ceramic tile surrounds

Compartmentalized water closet

Frameless, clear glass shower doors

SECONDARY BEDROOMS

Spacious rooms

Wired for phone and cable

Colonist sliding closet doors

{ Optional Upgrades }

Select from a full complement of room additions and floor plans

Select from a variety of cabinet styles, finishes, cabinet hardware and interior paint

Extensive selection of flooring materials and carpet

Additional interior wall and floor insulation

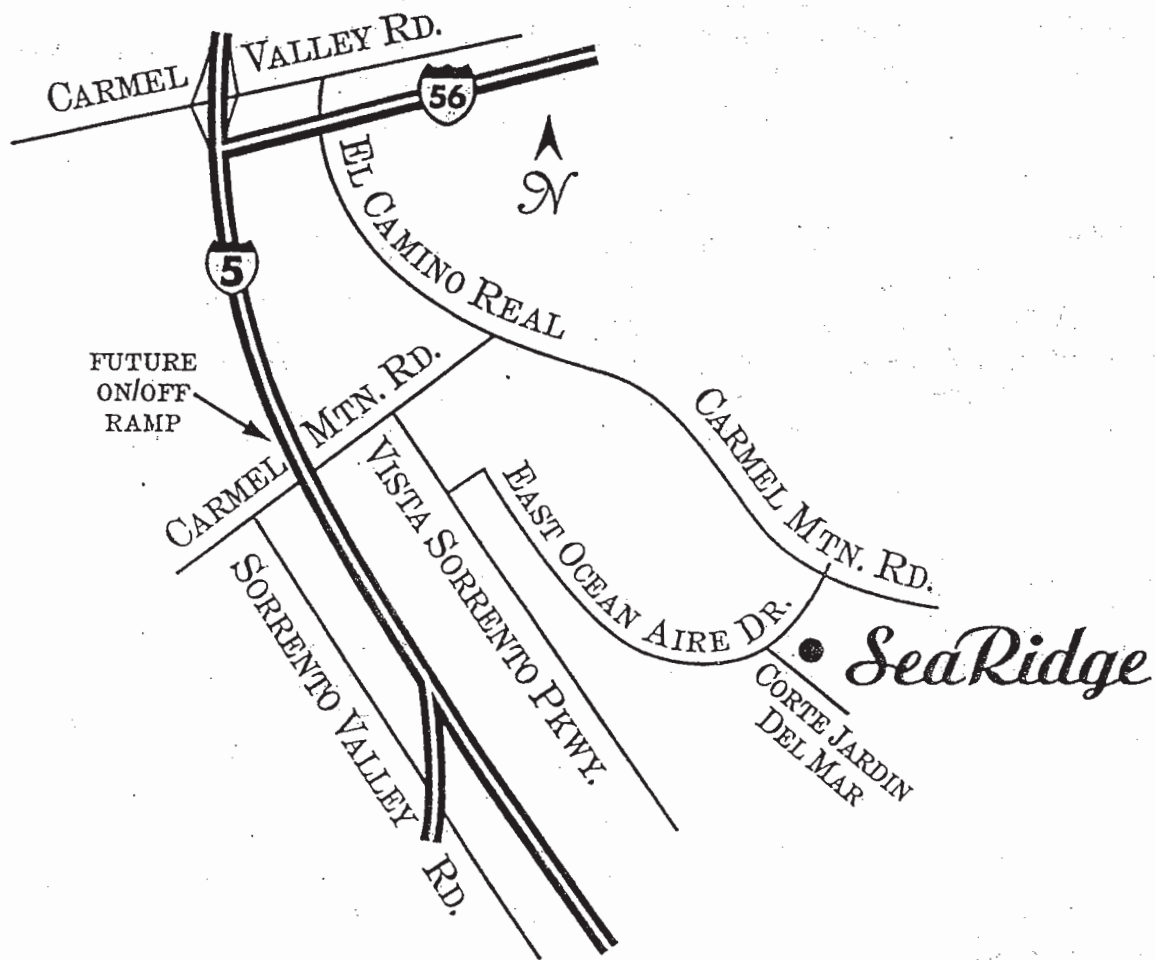
Closet systems planned to fit your needs

Mirrored bi-pass closet doors

Custom fireplace surrounds to add a personal touch

Kitchenaid® Upgrade Appliance Package

SeaRidge



Exit Carmel Valley Road – east.
 Turn right on El Camino Real – south.
 Right on East Ocean Aire Drive – west.
 Left on Corte Jardin Del Mar.

SeaRidge



Community Information:

SeaRidge is an exclusive community of 57 new homes with fabulous ocean, canyon and city light views. Our community is perfectly located within minutes from schools, shopping, beach and much more.

Local Schools:

Del Mar Heights Elementary (858) 755-9367 1355 Boqutta Dr., Del Mar
Sage Canyon Elementary (858) 481-7844 5290 Harvest Run Rd.
Carmel Valley Middle School (858) 481-8221 3800 Mykono Lane
Torrey Pines High School (858) 755-9301 3710 Del Mar Heights Rd

Note: Proposed Elementary School here at Torrey Hill's Master Community.

Contact schools for additional information. Del Mar Unified School District (858) 755-9301 & San Diego Unified School District (760) 753-8298.

Shopping:

*Plazza Del Mar- Vons Center at Carmel Valley Rd & Carmel Creek Road.
Del Mar Highlands Towncenter- A neighborhood center at El Camino & Del Mar Heights Road
Del Mar Plaza- Distinctive boutiques surrounded by fine restaurants and spectacular ocean views.
Flower Hill Plaza: Unique, fine specialty stores for all the hard to shop for buyers. Movie Theater.
U.T.C.- Indoor and outdoor shopping center featuring Nordstroms, Macy's, Sear's and much more.*

Community Recreations:

Torrey Hills Community Park: 14 acres with lighted Ball fields, picnic facilities, cabanas, trails, tot lots and a proposed state of the art "VMCA".

Carmel Valley Community Park at Del Mar Heights Rd- Pool, water slides, basketball, tennis, ball fields and Amphitheater.

Torrey Pines State Park & Beach- Nature area, beach and miles of trails.

Torrey Pines Golf Course 570-1234 11480 N.Torrey Pines Rd. La Jolla

<i>Home Owners Association Fee:</i>	<i>\$18.00 per month</i>
<i>Mello-Roos Fee:</i>	<i>\$145.00 per month</i>

*Please contact Helena or CC at SeaRidge Sales Office for more information or Email
SeaRidgeHelena@aol.com / CCSeaRidge@aol.com*

Plan #1 Sq. Ft. 2,308 / Plan #2 Sq. Ft. 2,514 / Plan #3 Sq. Ft. 2,908



HOME OF THE WEEK Lot #8 Plan 1

Plan		Phase 4	July Move In	
9	3B	Canyon View	Rear Deck, French Door ILO Slider	\$589,205
3	3BR	Canyon View	Rear Deck, French Door ILO Slider	SOLD \$585,205
6	3BR	Canyon, City Views	Rear Deck and more. Ask Sales	SOLD \$709,203
8	1BR	Ocean View	Rear Deck, Storage Room	\$707,198
Plan		Phase 5	September Move In	
1	3C	Ocean View, Huge Yard	Rear Deck*	\$689,890
3	3 B	Ocean View, Huge yard	Rear Deck *	\$575,990
4	1CR	Ocean View, Huge yard	Rear Deck*	SOLD \$540,990
10	3CR	Ocean View	Rear Deck*	SOLD \$730,990
11	2AR	Ocean View	Rear deck, 3 car garage, Super Bonus Room	\$690,880
12	1BR	Ocean View	Mocha Cabinets, Rear Deck*	SOLD \$680,580
13	2AR	Ocean View	5 th bedroom, Rear Deck, 3 car garage*	\$702,448
14	1AR	Ocean View	Rear Deck*	\$680,990
15	2BR	Ocean View	Rear Deck, 3 car garage*	SOLD \$705,990
16	1B	Ocean View	See Detailed Model Upgrade Sheet	\$755,880
17	2BR	Ocean View	See Detailed Model Upgrade Sheet	\$770,880

Ask Sales for List of upgrades included and
NEW PRICE INCENTIVES!!!

*See Map on the back of this sheet

June 12, 2001

In a continuous effort to improve our product, SeaCountry Homes reserves the right to change product design, specifications, materials, prices and terms without prior notice or obligation. All square footages are approximate.



Community Information:

SeaRidge is an exclusive community of 57 new homes with fabulous ocean, canyon and city light views. Our community is perfectly located within minutes from schools, shopping, beach and much more.

Local Schools:

- Del Mar Heights Elementary (858) 755-9367 1355 Boquita Dr., Del Mar*
- Sage Canyon Elementary (858) 481-7844 5290 Harvest Run Rd.*
- Carmel Valley Middle School (858) 481-8221 3800 Mykono Lane*
- Torrey Pines High School (858) 755-9301 3710 Del Mar Heights Rd.*

Note: Proposed Elementary School here at Torrey Hill's Master Community.

Contact schools for additional information. Del Mar Unified School District (858) 755-9301 & San Diegito Unified School District (760) 753-8298.

Shopping:

- Piazza Del Mar- Vons Center at Carmel Valley Rd & Carmel Creek Road*
- Del Mar Highlands Towncenter- A neighborhood center at El Camino & Del Mar Heights Road*
- Del Mar Plaza- Distinctive boutiques surrounded by fine restaurants and spectacular ocean views.*
- Flower Hill Plaza: Unique, fine specialty stores for all the hard to shop for buyers. Movie Theater.*
- U.T.C.- Indoor and outdoor shopping center featuring Nordstroms, Macy's, Sear's and much more.*

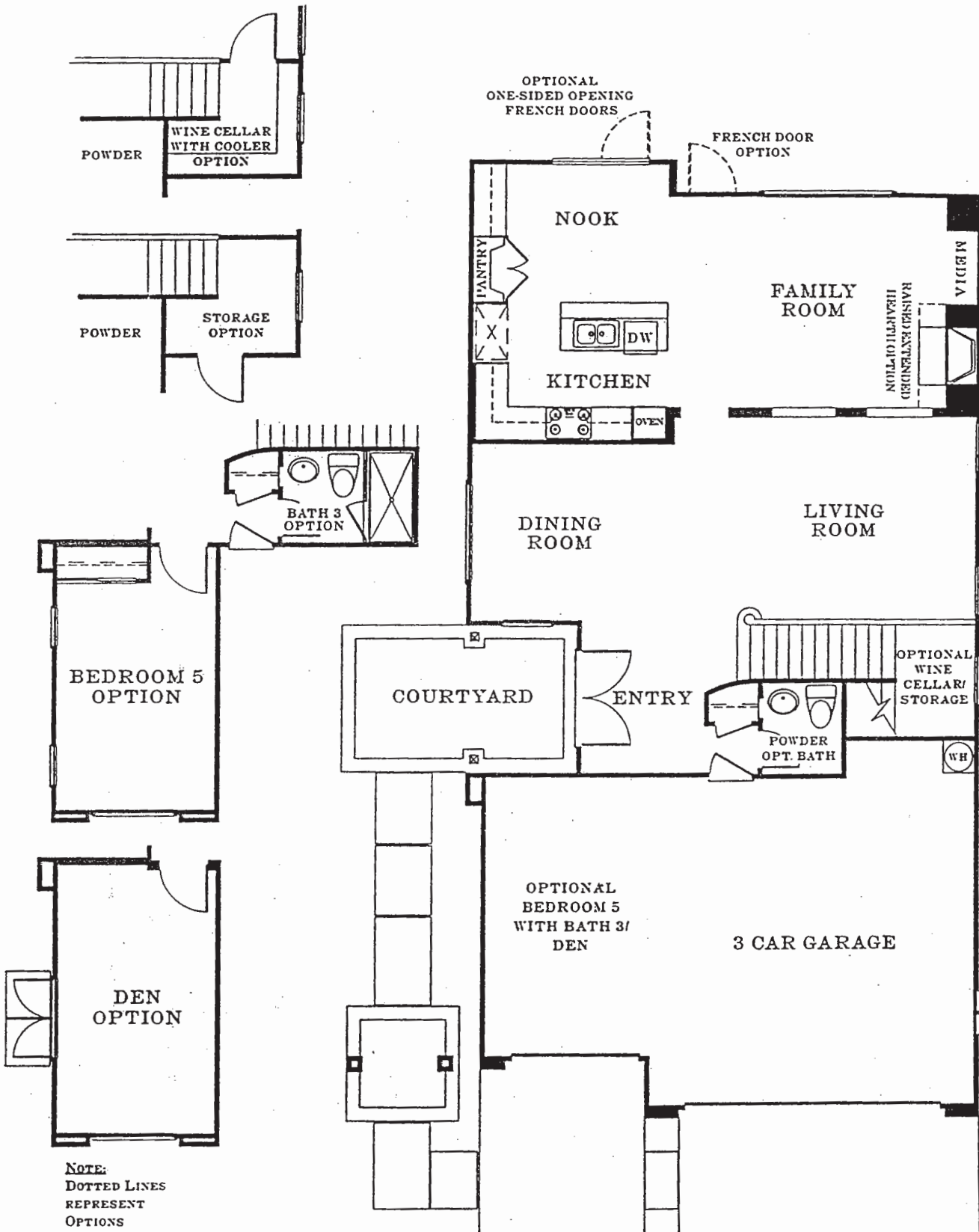
Community Recreations:

- Torrey Hills Community Park: 14 acres with lighted Ball fields, picnic facilities, cabanas, trails, tot lots and a proposed state of the art "VMCA".*
- Carmel Valley Community Park at Del Mar Heights Rd- Pool, water slides, basketball, tennis, ball fields and Amphitheater.*
- Torrey Pines State Park & Beach- Nature area, beach and miles of trails.*
- Torrey Pines Golf Course 570-1234 11480 N.Torrey Pines Rd. Ca Jolla*

<i>Home Owners Association Fee:</i>	<i>\$18.00 per month</i>
<i>Mello-Roos Fee:</i>	<i>\$145.00 per month</i>

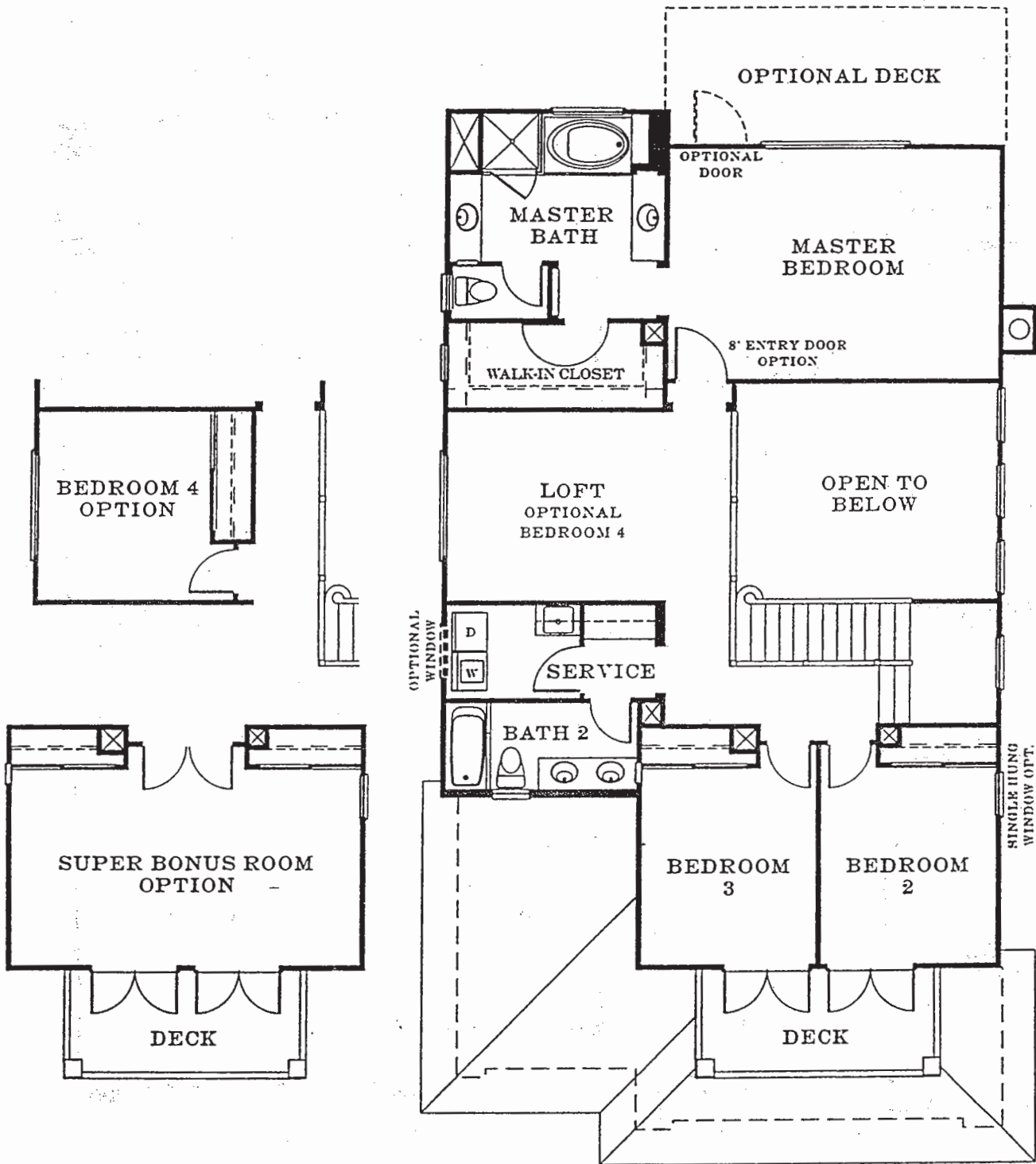
Please contact Helena or CC at SeaRidge Sales Office for more information or Email SeaRidgeHelena@aol.com / CCSeaRidge@aol.com

Plan #1 Sq. Ft. 2,308 / Plan #2 Sq. Ft. 2,514 / Plan #3 Sq. Ft. 2,908



NOTE:
 DOTTED LINES
 REPRESENT
 OPTIONS

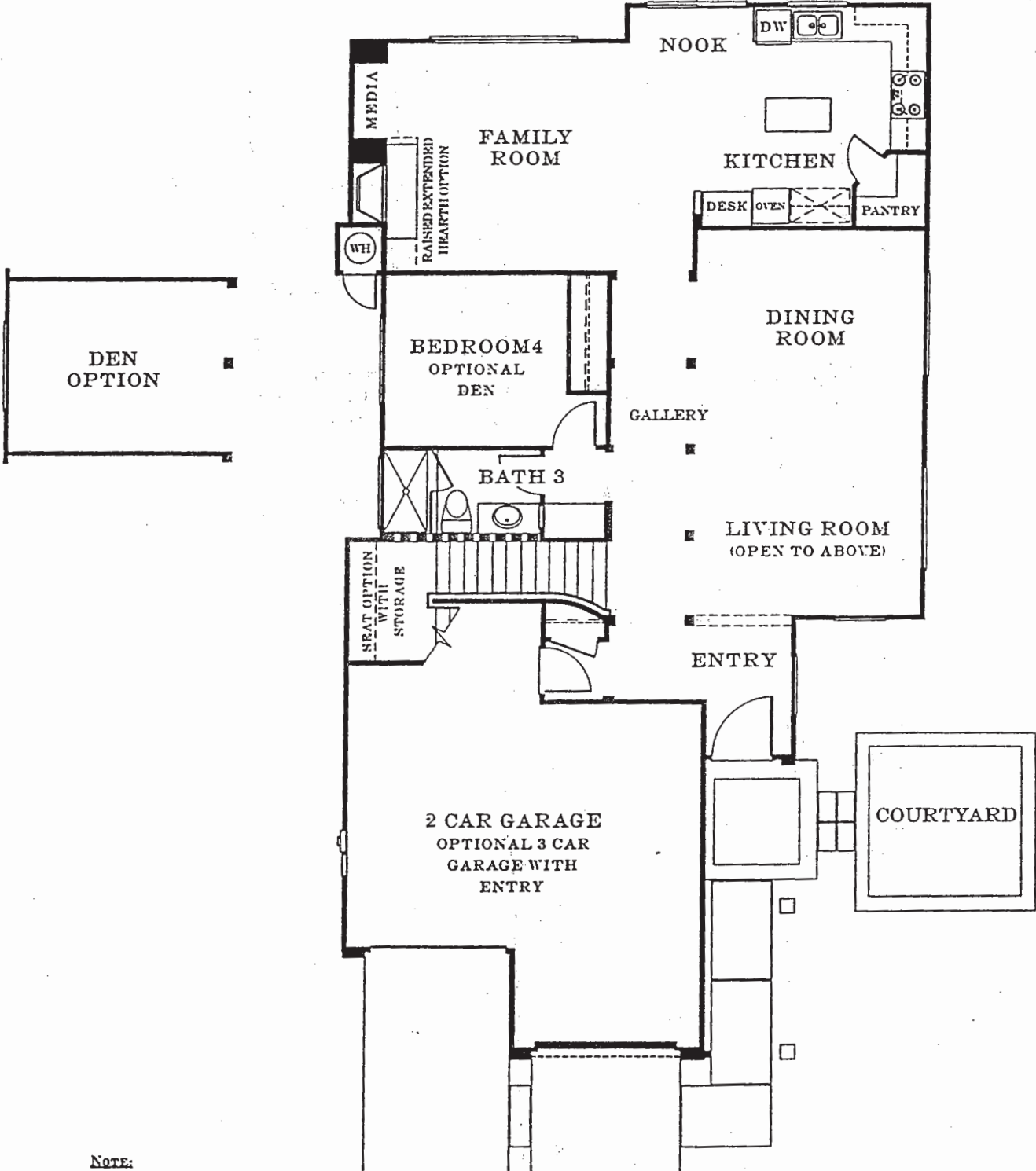
SeaRidge
 PLAN 1
 FIRST FLOOR WITH OPTIONS
 2,308 sq.ft +



NOTE:
 DOTTED LINES
 REPRESENT
 OPTIONS

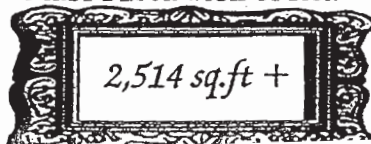
SeaRidge
 PLAN 1
 SECOND FLOOR WITH OPTION

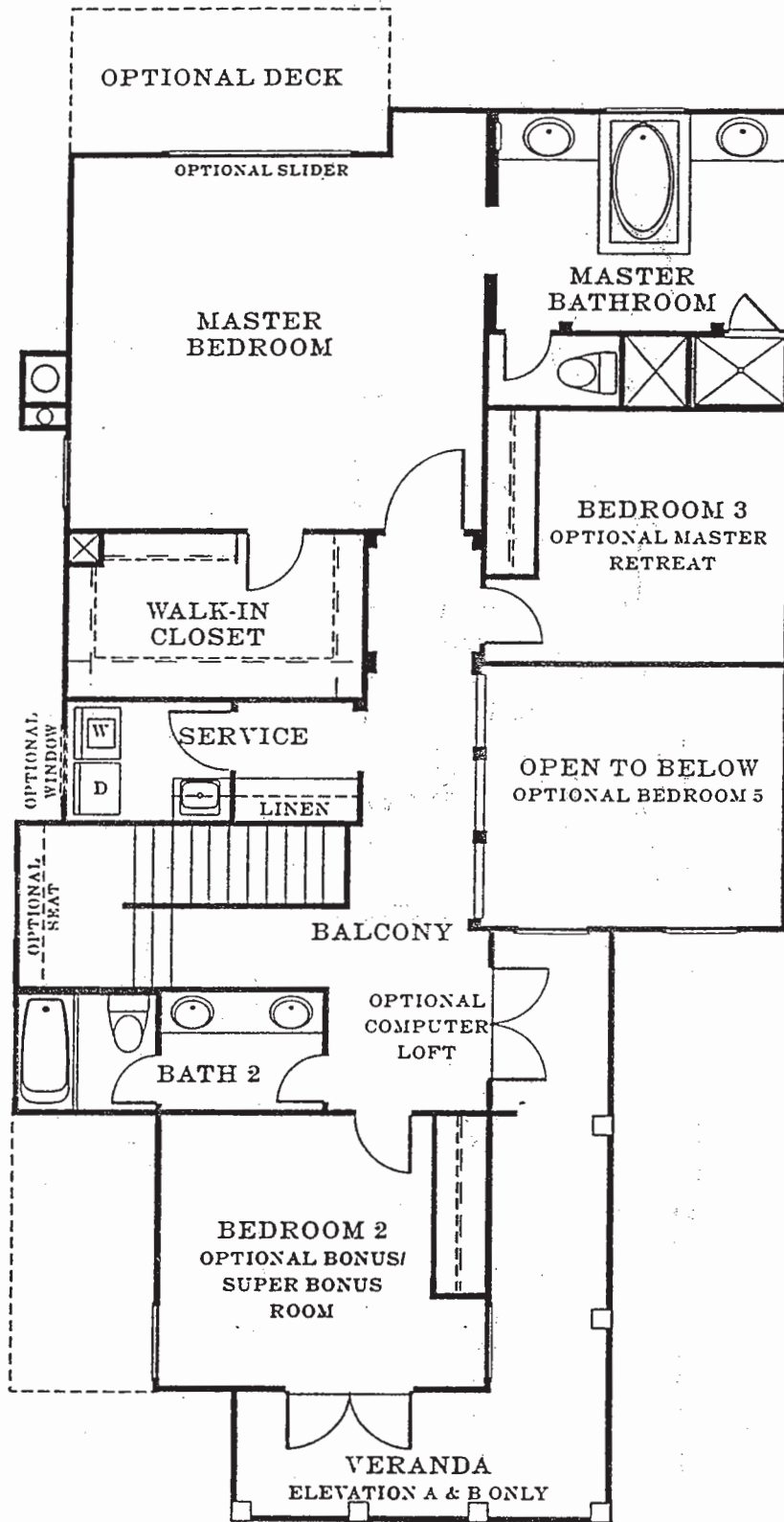
OPTIONAL
ONE-SIDED OPENING
FRENCH DOORS



NOTE:
DOTTED LINES
REPRESENT
OPTIONS

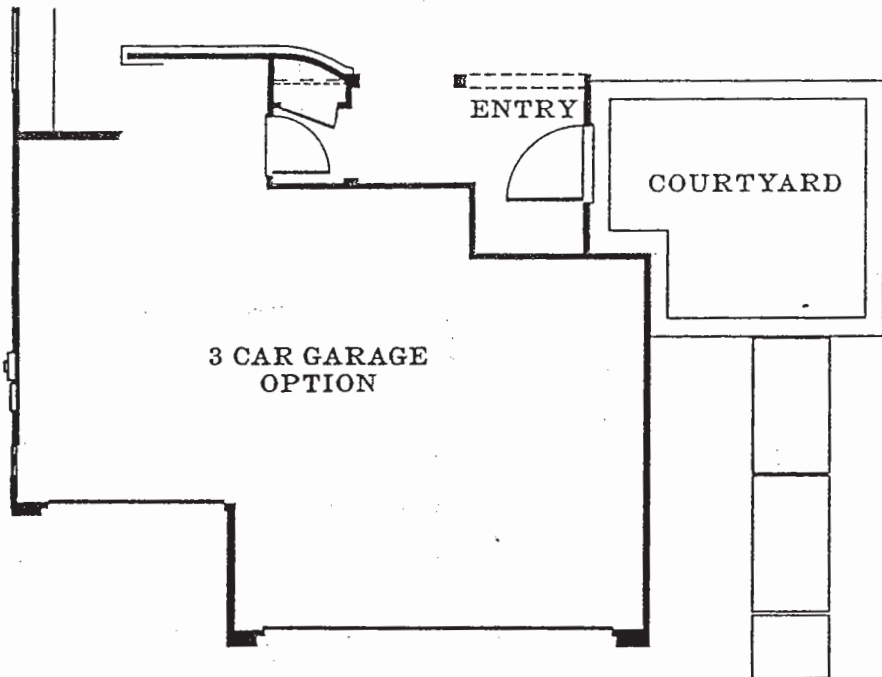
Sea Ridge
PLAN 2 (REVERSED)
FIRST FLOOR WITH OPTION





NOTE:
 DOTTED LINES
 REPRESENT
 OPTIONS

SeaRidge
 PLAN 2 (REVERSED)
 SECOND FLOOR



SeaRidge
PLAN 2 (REVERSED)
FIRST FLOOR OPTION

MASTER
BEDROOM

RETREAT
OPTION

OPEN

BONUS ROOM
OPTION

VERANDA
ELEVATION A & B ONLY

BEDROOM 5
OPTION

VERANDA

OPEN

BALCONY

COMPUTER
LOFT
OPTION

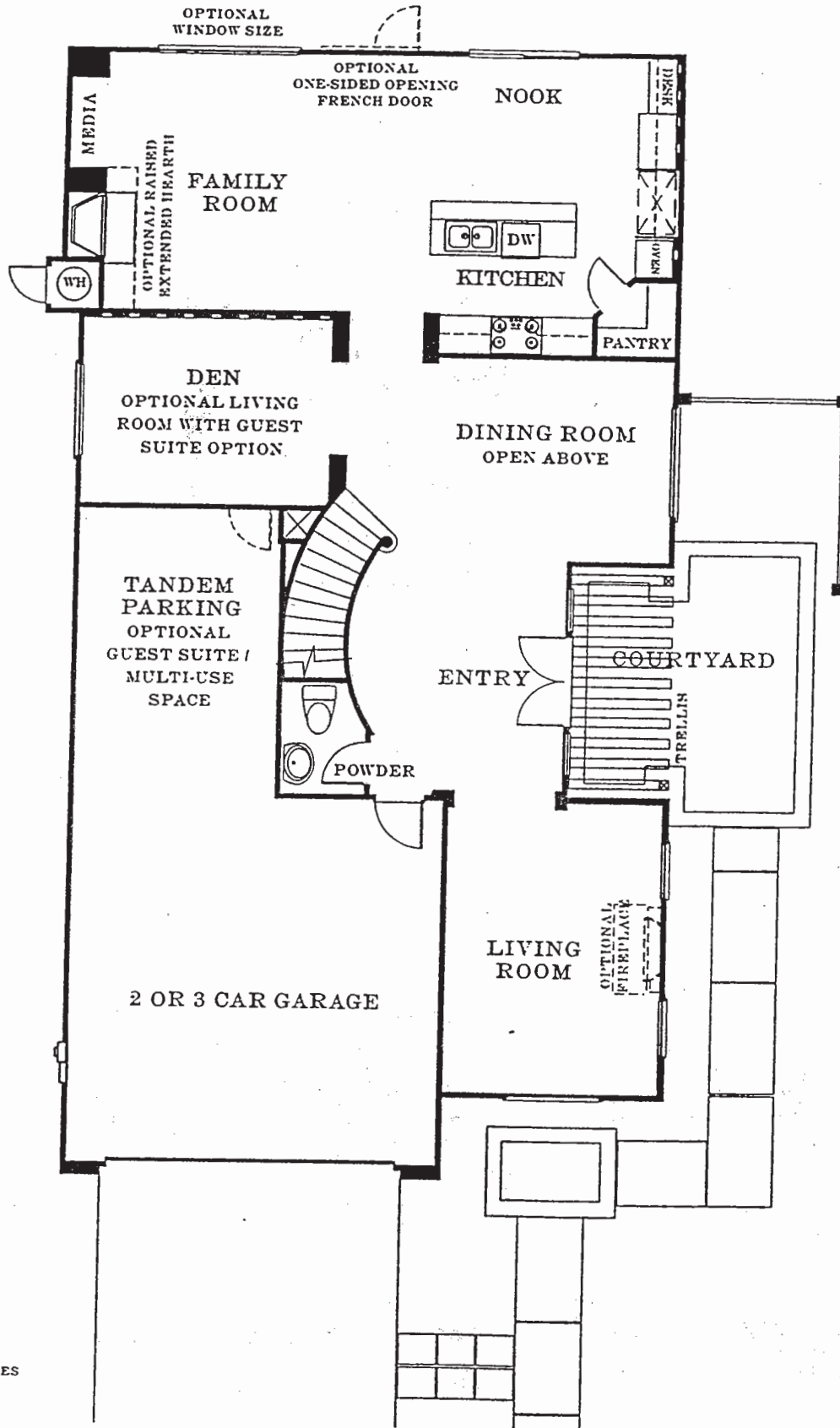
VERANDA
ELEVATION A & B ONLY

SUPER BONUS ROOM
OPTION

VERANDA
ELEVATION A & B ONLY

SeaRidge

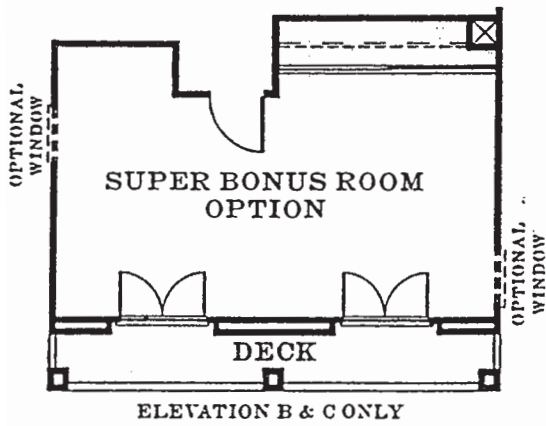
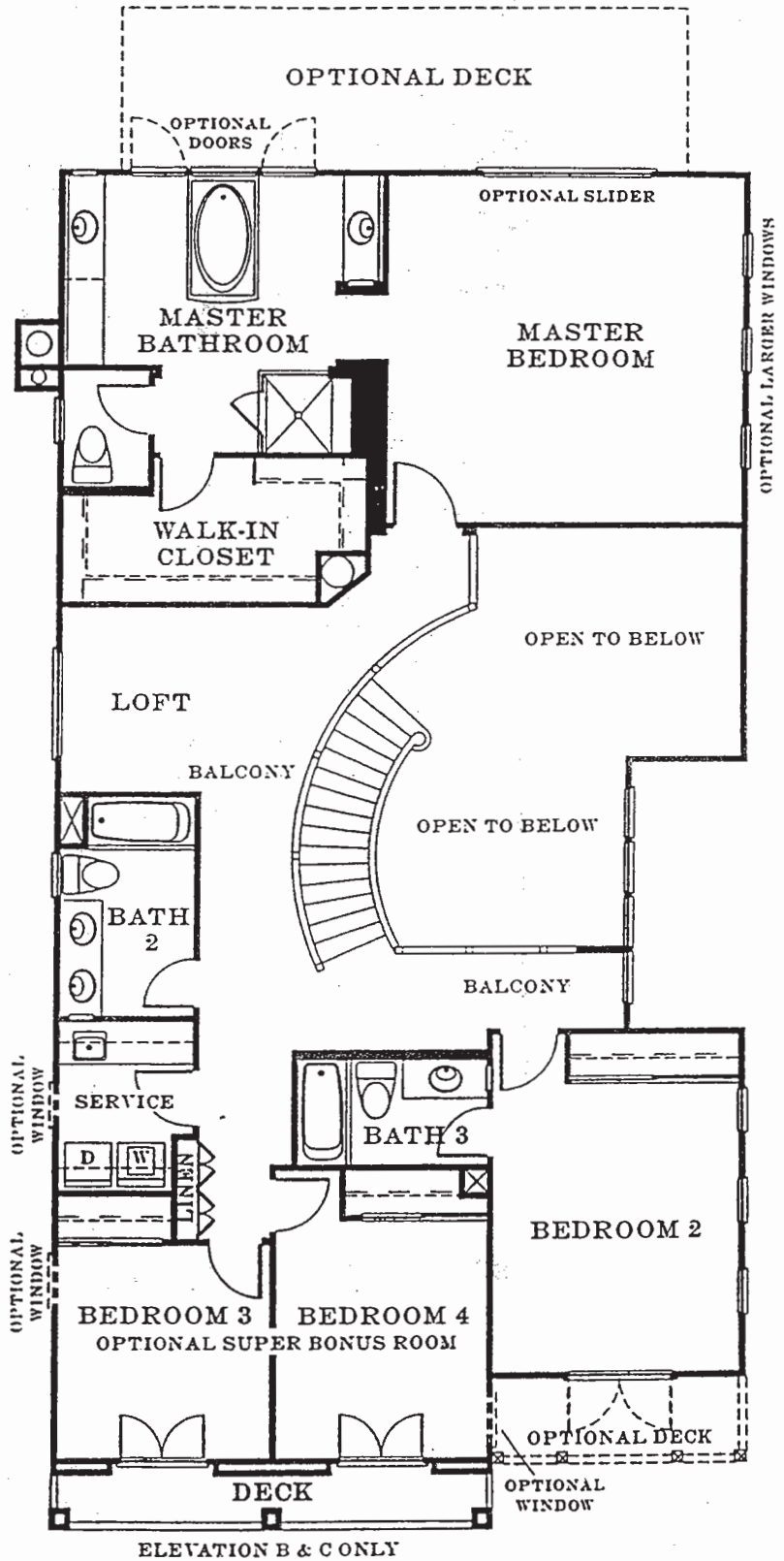
PLAN 2 (REVERSED)
SECOND FLOOR OPTIONS



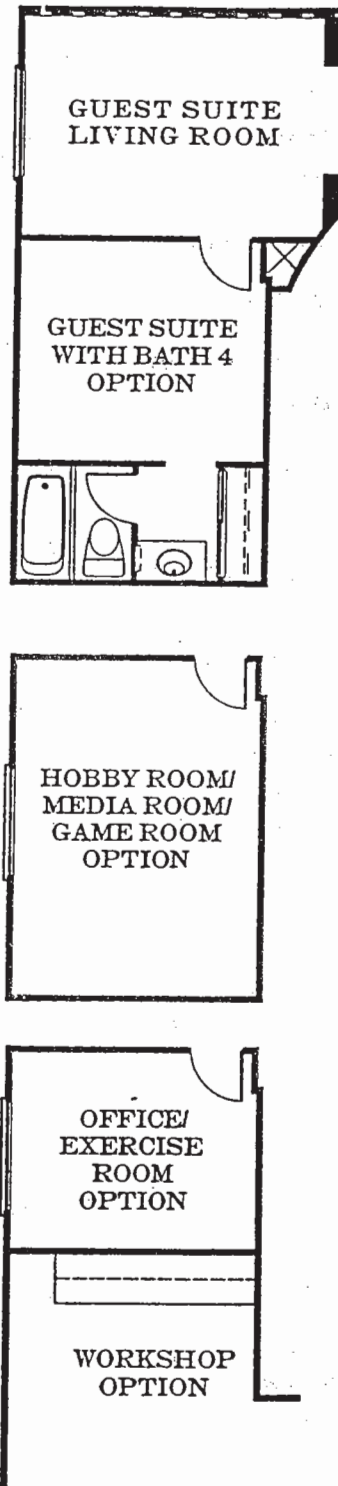
NOTE:
 DOTTED LINES
 REPRESENT
 OPTIONS

SeaRidge
 PLAN 3 (REVERSED)
 FIRST FLOOR

2,909 sq.ft +



SeaRidge
 PLAN 3 (REVERSED)
 SECOND FLOOR WITH OPTION



NOTE:
 DOTTED LINES
 REPRESENT
 OPTIONS

SeaRidge
 PLAN 3 (REVERSED)
 FIRST FLOOR OPTIONS

{ Standard Features }

Distinctive coastal-style homes

Spectacular ocean & city light views in selected residences

Inviting balconies and decks available on all elevations, offering superb outdoor living and taking full advantage of the spectacular ocean and city light views

Rain gutters and downspout (selected areas)

Convenient, economical gas connection for barbeque

The finest dual-glazed vinyl clad windows

Garage fully finished with drywall

EXCEPTIONAL INTERIORS

12" x 12" ceramic tile flooring in entry

The comfort of plush long-wear carpet in a variety of stylish colors

Category 5 wiring enabling high-speed internet access and full home networking capability

Wood burning fireplaces in selected rooms

Silent electrical light switches by "Decora"

Separate interior laundry space with abundant cabinet space and ceramic tile countertop

50 gallon gas hot water heater, for a hot shower at every shower

Pre-wire for standard telephone lines and cable television in all bedrooms, kitchen, family room, loft or den

ELEGANT KITCHENS

Premium appliances by Whirlpool® in your choice of white or black

30" gas, 4 burner cooktop.

Whirlpool® Quiet Wash Plus, 5-cycle dishwasher

Whirlpool® Accubake, EZ-touch 300 electronic oven and timer

Whirlpool® gold microwave 1.9 cu. ft.

Euro design cabinets with white matte finish and raised panel doors

Walk-in Pantry (plan 2 & 3)

Attractive 6" x 6" ceramic tile countertops

Insinkerator® heavy-duty garbage disposal

GREAT MASTERS

Spacious dressing area with walk-in closets

Clean, 4" x 4" ceramic tile counters

Relaxing soaking tub with ceramic tile surrounds

Compartmentalized water closet

Frameless, clear glass shower doors

SECONDARY BEDROOMS

Spacious rooms

Wired for phone and cable

Colonist sliding closet doors

{ Optional Upgrades }

Select from a full complement of room additions and floor plans

Select from a variety of cabinet styles, finishes, cabinet hardware and interior paint

Extensive selection of flooring materials and carpet

Additional interior wall and floor insulation

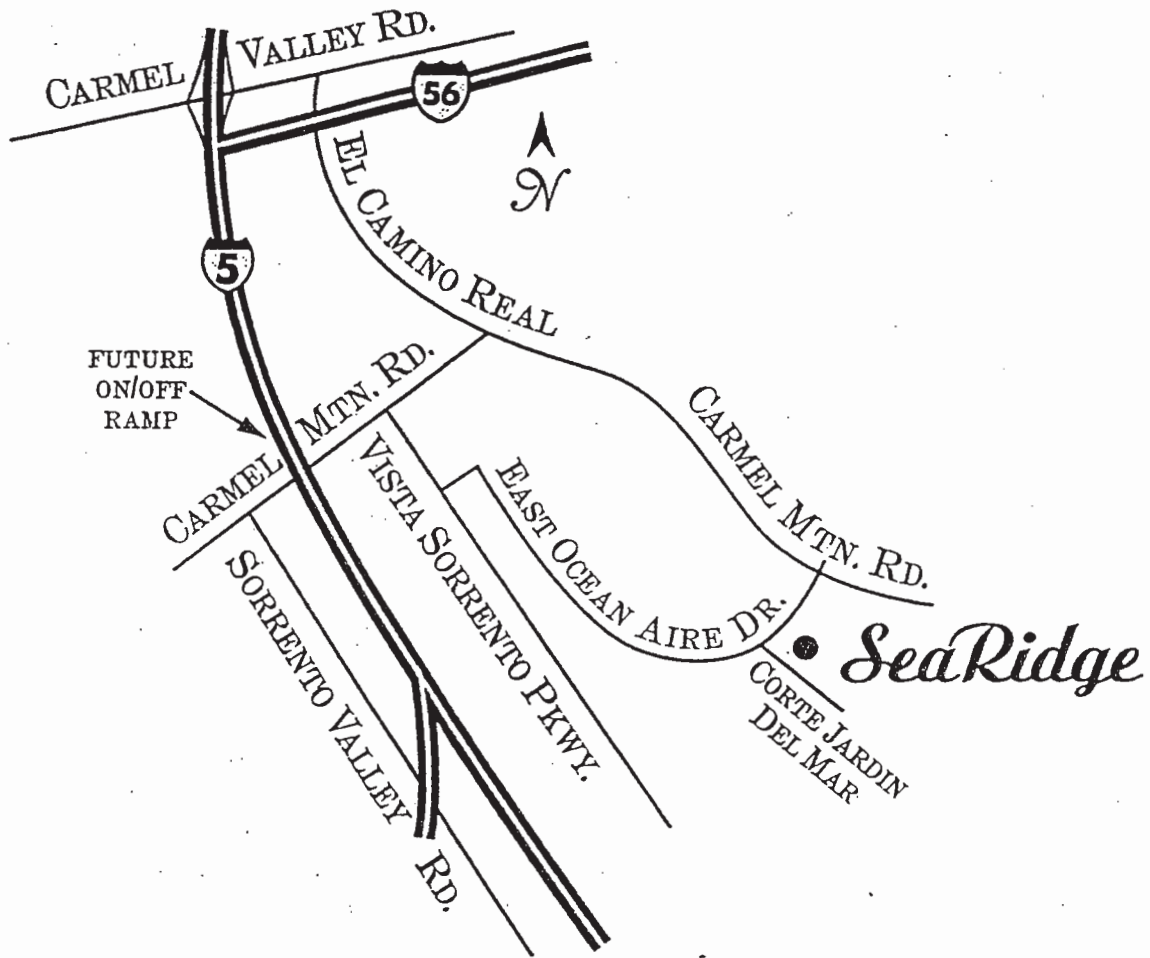
Closet systems planned to fit your needs

Mirrored bi-pass closet doors

Custom fireplace surrounds to add a personal touch

Kitchenaid® Upgrade Appliance Package

SeaRidge



Exit Carmel Valley Road – east.
 Turn right on El Camino Real – south.
 Right on East Ocean Aire Drive – west.
 Left on Corte Jardin Del Mar.

SeaRidge