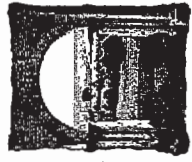


# Sansonnét

at Torrey Hills



# *Sansonnét*

AT TORREY HILLS

---

The Auberge Collection

PRELIMINARY

Maybe it reminds you of when you first met. Or that long holiday in the south of France you've always dreamed about.

A gentle, ocean breeze. The sun caresses your loved one's smile. A view that stretches to forever.

A love that promises to last just as long. The Auberge Collection of Sansonnét at Torrey Hills successfully blends European charm and sophisticated elegance in the finest French tradition. Its amenities are incomparable. Its views unrivaled. Spacious

two story floorplans embrace soothing ocean vistas and romantic country sunrises. Sansonnét at Torrey Hills.

A moment from everything. And close to your dream of perfection. *Toujours amour!*

# Villa

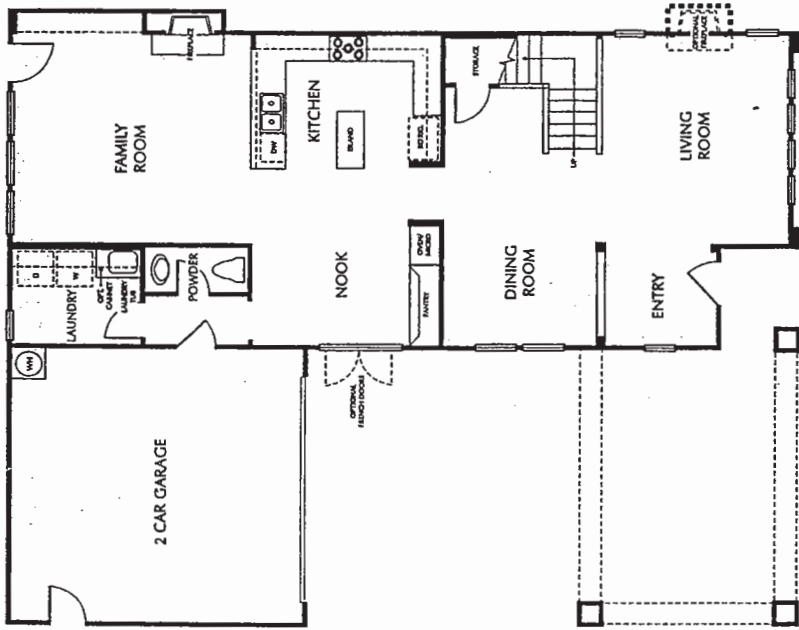
## Plan One

2,309 to 2,468 Sq. Ft.

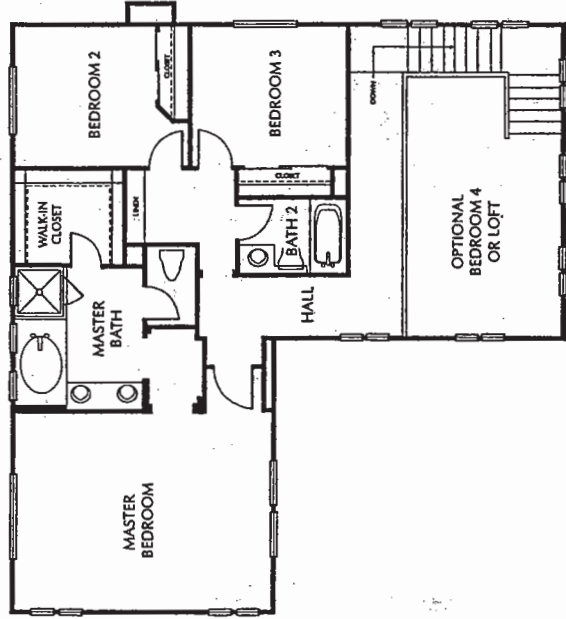
3 Bedroom, 2 1/2 Bath

2 Car Garage

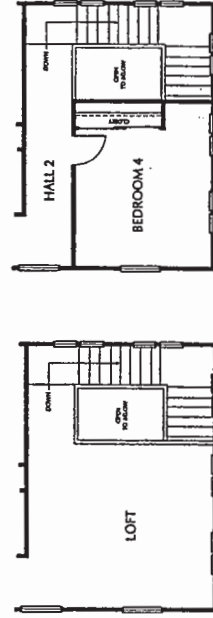
Optional 4th Bedroom and loft



First Floor



Second Floor

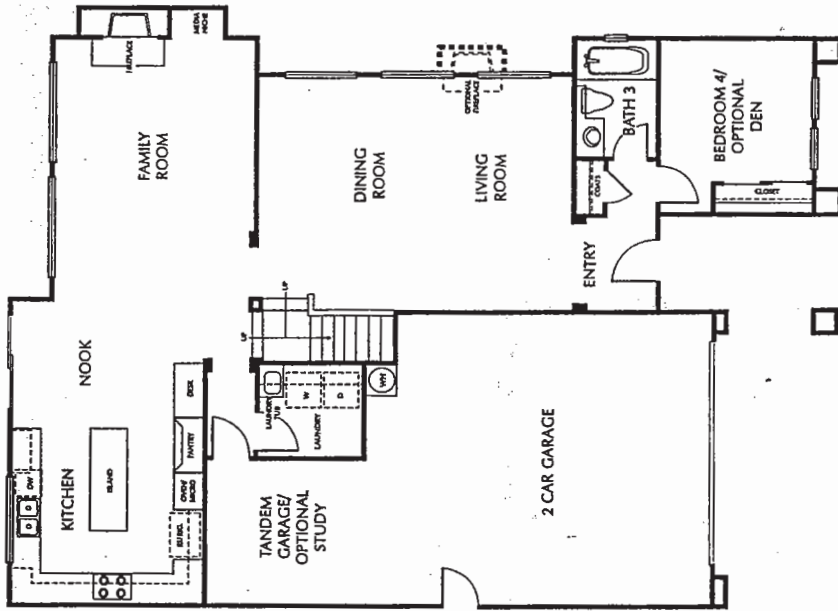




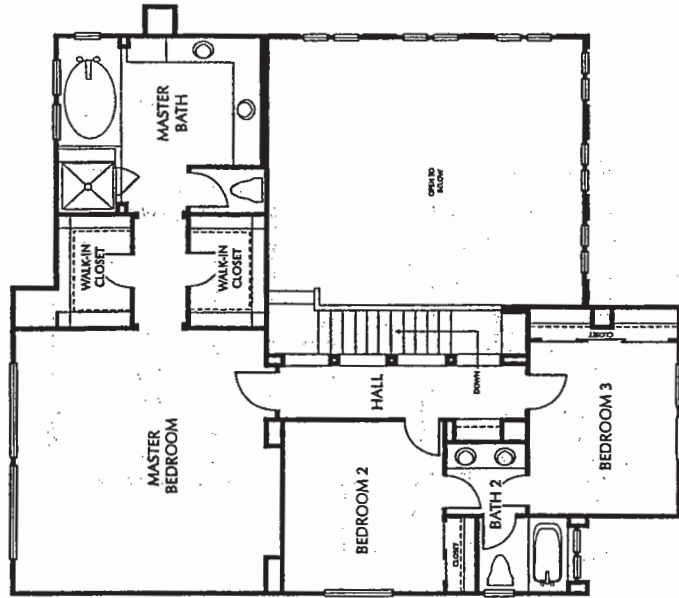
# Maison

## Plan Two

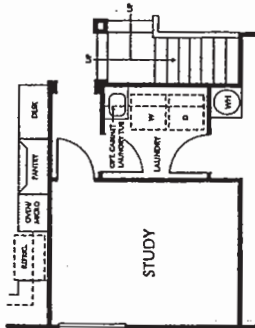
2,533 to 2,675 Sq. Ft.  
4 Bedroom, 3 Bath  
3 Car Tandem Garage  
Optional Study



First Floor



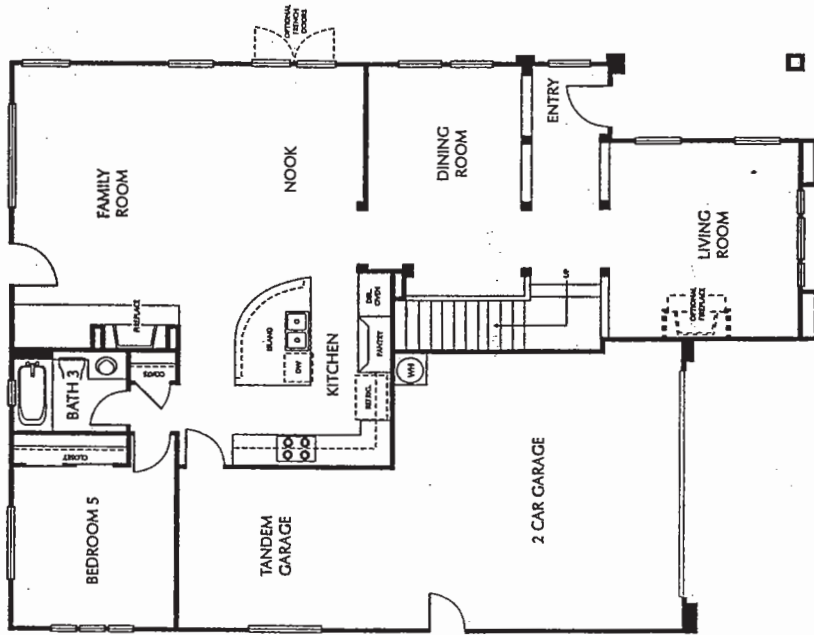
Second Floor



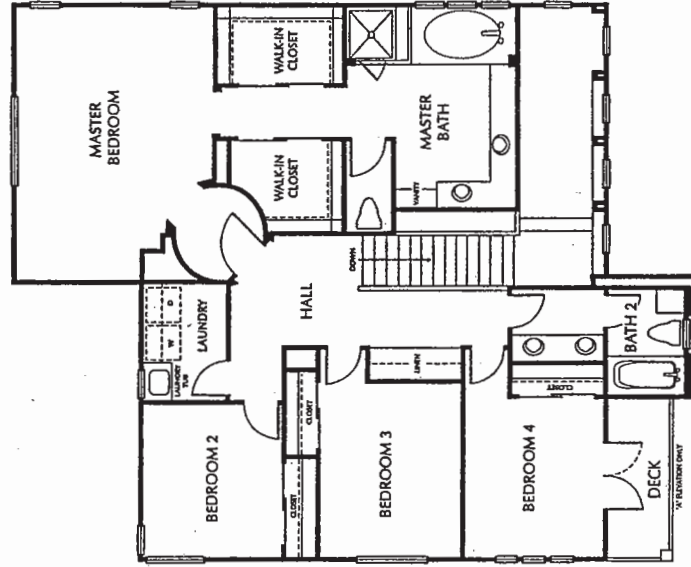
# Chateau

## Plan Three

2,771 Sq. Ft.  
5 Bedroom, 3 Bath  
3 Car Garage



First Floor



Second Floor

*Standard Pacific is one of the nation's largest and most successful publicly-owned homebuilding firms,*

*with shares currently traded on the New York Stock Exchange. Company divisions operating in California,*

*Texas and Arizona have built more than 38,000 homes over the past three decades. Homeownership is a cherished*

*American tradition. A new home is also the largest single financial commitment that most families ever make.*

*All of us at Standard Pacific are dedicated to helping buyers realize the goal of new homeownership by giving them*

*the utmost in value, design and location. Standard Pacific's new home developments are situated in established*

*residential neighborhoods. These distinctive locations, plus our commitment to excellence in design and construction,*

*are reasons why Standard Pacific enjoys one of the industry's highest referral rates.*

*Standard Pacific Homes. Your Neighborhood Builder.*





## Handsome Exteriors

- Distinctive Italianate, French country or Spanish inspired architecture
- 12. Architecturally-selected exterior color palettes
- Fire resistant, durable concrete roofs with curved and flat tiles in blended color palettes
- Elegant exterior coach lighting
- Lighted, recessed address plates
- Concrete walkways and custom coordinated scored driveways
- Side and rear-yard fencing, fully painted
- High quality steel roll up garage doors
- 2 & 3 car fully drywalled with textured finish garages
- Electronic garage door opener on 2 car garage door with remote
- Weather proof exterior electrical outlets
- BBQ stub at rear of home
- Custom hand applied sand stucco finish
- Dramatic 8' solid wood entry door
- Baldwin entry door hardware

## Living Interiors

- Elegant interior architectural details
- Well designed floorplans for your living enjoyment
- Dramatic entries with 12 x 12 ceramic tile
- Wood-burning fireplace with log lighter and valve in family room
- Custom radius wall corners
- Dramatic volume ceilings
- Distinctive lighting fixtures and architecturally specified recessed lighting
- Raised panel Colonialist interior doors
- Polished brass interior levered door hardware
- Silent touch Decora rocker switches and electrical receptacles throughout
- Elegant staircases with oak handrails, oak spindles, oak tase tread ends, oak kickboards and skirtboards
- Elegant stool and apron window trim detail (upstairs and downstairs at specific windows)

Oversized 4" Cape Cod baseboards and 2 1/2" Cape Cod molding

2 coats of semi gloss paint on all enameled areas of interior trim, swing doors and standard stool and apron areas

Interior laundry room with oak cabinets and laundry sink with 6 x 6 white ceramic tile

High speed category 5 phone wiring and RG-6 shielded coaxial cabling

Prewired for basic security system and for intercom system

Handset 6 x 6 white ceramic tile surrounds in secondary baths

## Gourmet Kitchens

Designed for maximum efficiency and minimum effort

6" x 6" white ceramic tile countertops with 6" backsplash, and full backsplash at the cooktop

Deluxe oak cabinetry with vinyl lining and adjustable shelves with concealed european hinges

Exquisite glass panel doors on selected cabinets

Convenient kitchen islands

Inviting breakfast nooks

Spacious pantries

Under cabinet task lighting

Dual-compartmented cast iron sink with Moen deluxe single handle faucet with pull-out spray

Low noise level disposal

GE Profile series kitchen appliances in choice of either black or white

GE Profile five-burner gas cooktop

GE Profile series self cleaning convection oven and separate GE Profile microwave

GE Profile "Quiet Power" dishwasher

Refrigerator space equipped with waterline for ice-maker

## Luxurious Master Suites

- Spacious walk-in closets
- Custom oak cabinetry

Hand set 6 x 6 white ceramic tile countertops with "his" and "hers" dual basins

Elegant acrylic oval tub and separate shower with 6 x 6 white ceramic tile surrounds

Deluxe Price Pfister faucet and shower controls with polished brass and chrome finish (also in secondary baths)

Frameless clear safety glass shower enclosure

Mirrored wardrobe doors or salon doors at master and secondary bedrooms

## Quality Construction Features

Post tension foundation

"Silent Floor" second story truss joist system

Copper plumbing throughout

Silent wall drain pipes

12" moisture stop treatment at windows

Braided stainless steel water supply lines

## Energy Conservation

Deluxe dual glazed vinyl windows

Fully insulated exterior walls and ceilings

Insulated interior walls and second story floors for additional energy savings and sound reduction

Water saving plumbing fixtures, 50 gallon high efficiency glass lined gas water heater

Energy efficient dual zoned central forced air heating with "recessed" digital thermostat

Pre-plumbed for air conditioning

Gas stub for energy efficient gas dryer

## Options To Consider

- Air conditioning
- Upgraded flooring
- Cherry, maple, and white cabinetry
- Kitchen countertop and backsplash upgrades
- Master and secondary bathroom countertops and surrounds in selected colors and styles
- Living room and master bedroom fireplaces (on selected plans)
- Home theater system
- Surround sound
- Security system
- Video security

Central vacuum system

Additional phone, cable and electrical outlets

Outlet for electric dryer

Tub/Shower enclosures for secondary bathrooms

Jetted tubs at the master bath

Appliance upgrades:

GE Monogram built-in refrigerator and wood panels

GE Monogram series appliances

GE Profile or Monogram trash compactor

GE Performance cooktop hood-high capacity

GE Performance stainless steel built-in refrigerator

GE Performance stainless steel, commercial style cooktop

Purified and filtered drinking water systems

Decks at selected locations

Enhanced stairwell lighting

Iron stair spindle packages

Room options and convenient flex spaces

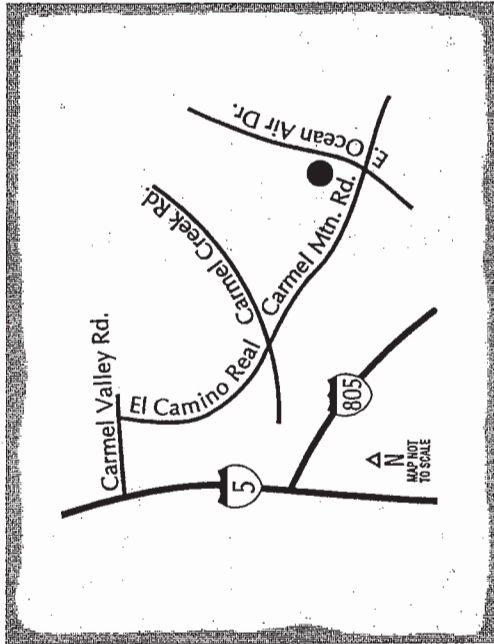
Custom paint packages

Water conserving hot water Demand system

## Important Notes

\*All options have construction cut-off dates. Please consult with our Option Consultant for further information regarding the availability and pricing of options and upgrades. In our continuing policy of research and improvement, Standard Pacific Homes reserves the right to change product design, specifications, materials, options, prices and terms without prior notice.





11319 Longshore Court  
 San Diego, CA 92130  
 (858) 720-1809  
 FAX (858) 720-9509

 **STANDARD PACIFIC**  
 HOMES

*Home Loans Offered by* **FAMILY LENDING**  
 A subsidiary of Standard Pacific Corp.



*Sansonnet*

AT TORREY HILLS

153-183

\$5000 REFERRAL

PRIORITY LIST

DEPOSIT \$5000

**Please notice the fine appointments  
included in every home at the  
Versailles Collection at Sansonnet**

- ❖ **Elegant Granite or Silestone Kitchen  
Countertops in 8 beautiful color choices**
- ❖ **Interior Insulation "Quiet House" program**
- ❖ **Rain Gutters & Downspouts**
- ❖ **Solid wood entry doors**
- ❖ **Custom Scored Driveways**
- ❖ **Stool & Apron Wood window detail**
- ❖ **Crown Moldings at the Master Bedroom**
- ❖ **Security System and pre-wired for intercom**

**Many of our homesites are large enough to  
accommodate that backyard pool you have always  
dreamed of.**

VERSAILLES COLLECTION

11319 Longshore Court • San Diego, California 92130  
(858) 792-5383 • Fax (858) 792-7058

## *Sansonnet at Torrey Hills*

- *Located within and adjacent to the highly sought after Master Planned Community of Torrey Hills*
- *Only minutes to Olde Del Mar shops & restaurants, movie theaters, grocery shopping, banks, award-winning golf courses and beautiful beaches & parks*
- *Sansonnet is comprised of two distinctive communities-  
The Auberge Collection & The Versailles Collection*

*The Auberge Collection  
2,309 - 2,771 Sq. ft.  
3 to 5 Bedrooms  
2½ to 3½ Baths  
2 and 3 Car Garages  
(Not Modeled)*

*The Versailles Collection  
2,716 - 3,876 Sq. ft.  
3 to 5 Bedrooms  
2½ to 4 ½ Baths  
2 and 3 Car Garages  
(5 Models)*

- *Each home features Crown Molding at the Master Bedroom, Stool & Apron Wood Window Detail, Interior insulation "Quiet House" program, Solid Wood Entry Doors, Custom Scored Driveways and elegant staircases with a oak handrail, spindles, false treads, skirtboards and kick boards.*
- *Elegant Granite or Silestone Kitchen Countertops in 8 beautiful color choices and security system with the intercom pre-wire are included at the Versailles Collection*
- *Distinctive options and customizing program available for the discriminating buyer*
- *Located within the Del Mar Union School District and San Dieguito High School District  
Del Mar Heights Elementary or Del Mar Hills Elementary School  
Carmel Valley Middle School  
Torrey Pines High School*
- *Estimated Monthly Fees shown below- Please see Sales Representative for specific details*

<i>The Auberge Collection</i>	<i>The Versailles Collection</i>
<i>\$95- \$114/ month</i>	<i>\$ 114 - \$ 166/ month</i>
- *25 Spectacular locations available to purchase on Saturday, March 25<sup>th</sup>*
- *Handcrafted by Standard Pacific*

## *Sansonnet at Torrey Hills*

- *Located within and adjacent to the highly sought after Master Planned Community of Torrey Hills*
- *Only minutes to Olde Del Mar shops & restaurants, movie theaters, grocery shopping, banks, award-winning golf courses and beautiful beaches & parks*
- *Sansonnet is comprised of two distinctive communities-  
The Auberge Collection & The Versailles Collection*

*The Auberge Collection  
2,309 - 2,771 Sq. ft.  
3 to 5 Bedrooms  
2½ to 3½ Baths  
2 and 3 Car Garages  
(Not Modeled)*

*The Versailles Collection  
2,716 - 3,876 Sq. ft.  
3 to 5 Bedrooms  
2½ to 4 ½ Baths  
2 and 3 Car Garages  
(5 Models)*

- *Each home features Stool & Apron Wood Window Detail, Interior insulation "Quiet House" program, Solid Wood Entry Doors, Custom Scored Driveways and elegant staircases with a oak handrail, spindles, false treads, skirtboards and kick boards.*
- *Elegant Granite or Silestone Kitchen Countertops in 8 beautiful color choices, Crown Molding at the Master Bedroom and security system with the intercom pre-wire are included at the Versailles Collection*
- *Distinctive options and customizing program available for the discriminating buyer*
- *Located within the Del Mar Union School District and San Dieguito High School District  
Del Mar Heights Elementary or Del Mar Hills Elementary School  
Carmel Valley Middle School  
Torrey Pines High School*
- *Estimated Monthly Fees shown below- Please see Sales Representative for specific details*

<i>The Auberge Collection</i>	<i>The Versailles Collection</i>
<i>\$95- \$114/ month</i>	<i>\$ 114 - \$ 166/ month</i>
- *25 Spectacular locations available to purchase on Saturday, March 25<sup>th</sup>*
- *Handcrafted by Standard Pacific*

*(In our continuing policy of research and improvement, Standard Pacific Homes reserves the right to change product, design, specifications, materials, prices and terms without prior notice. 3/16/2000)*