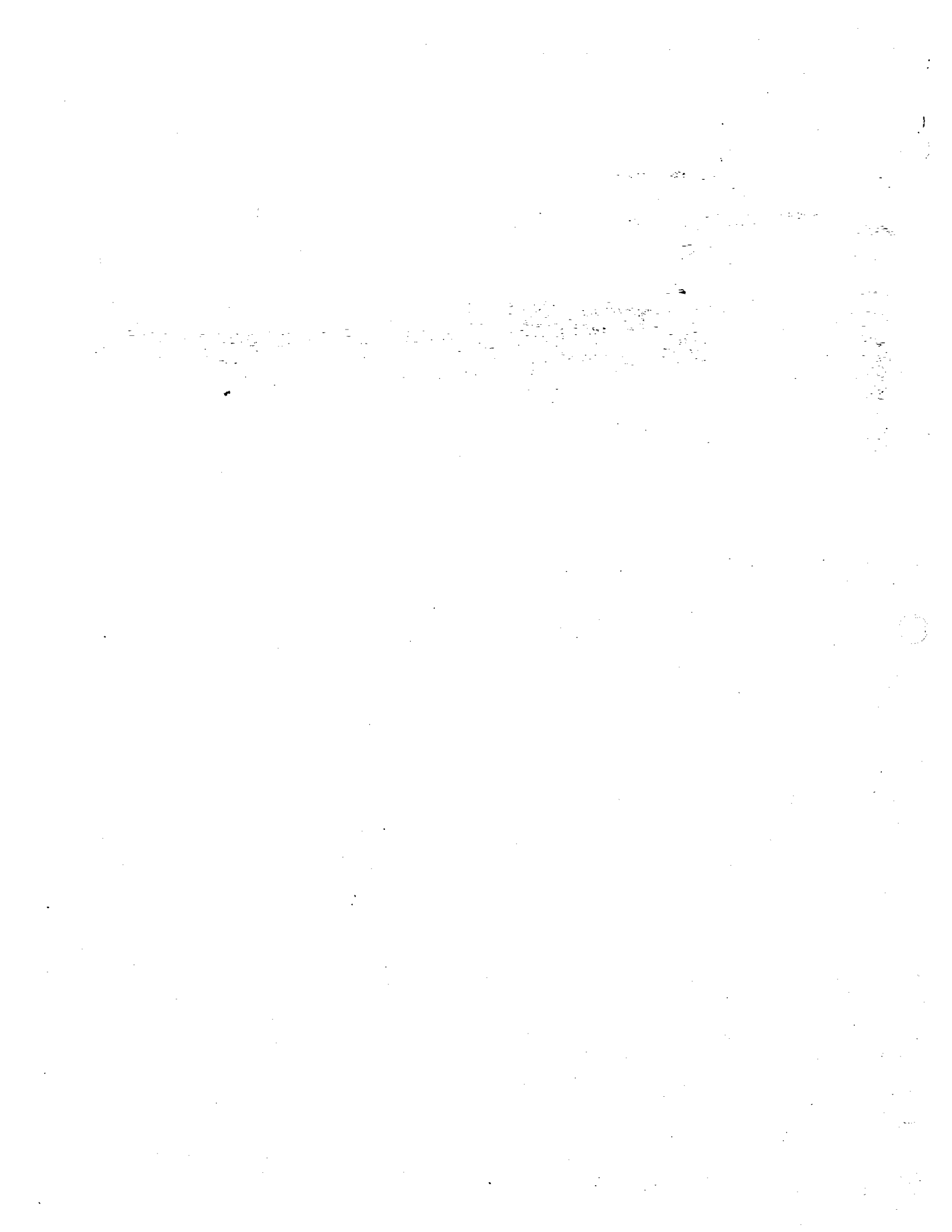
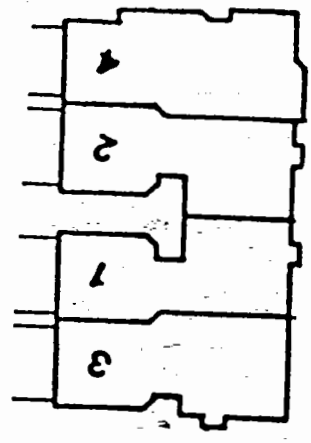
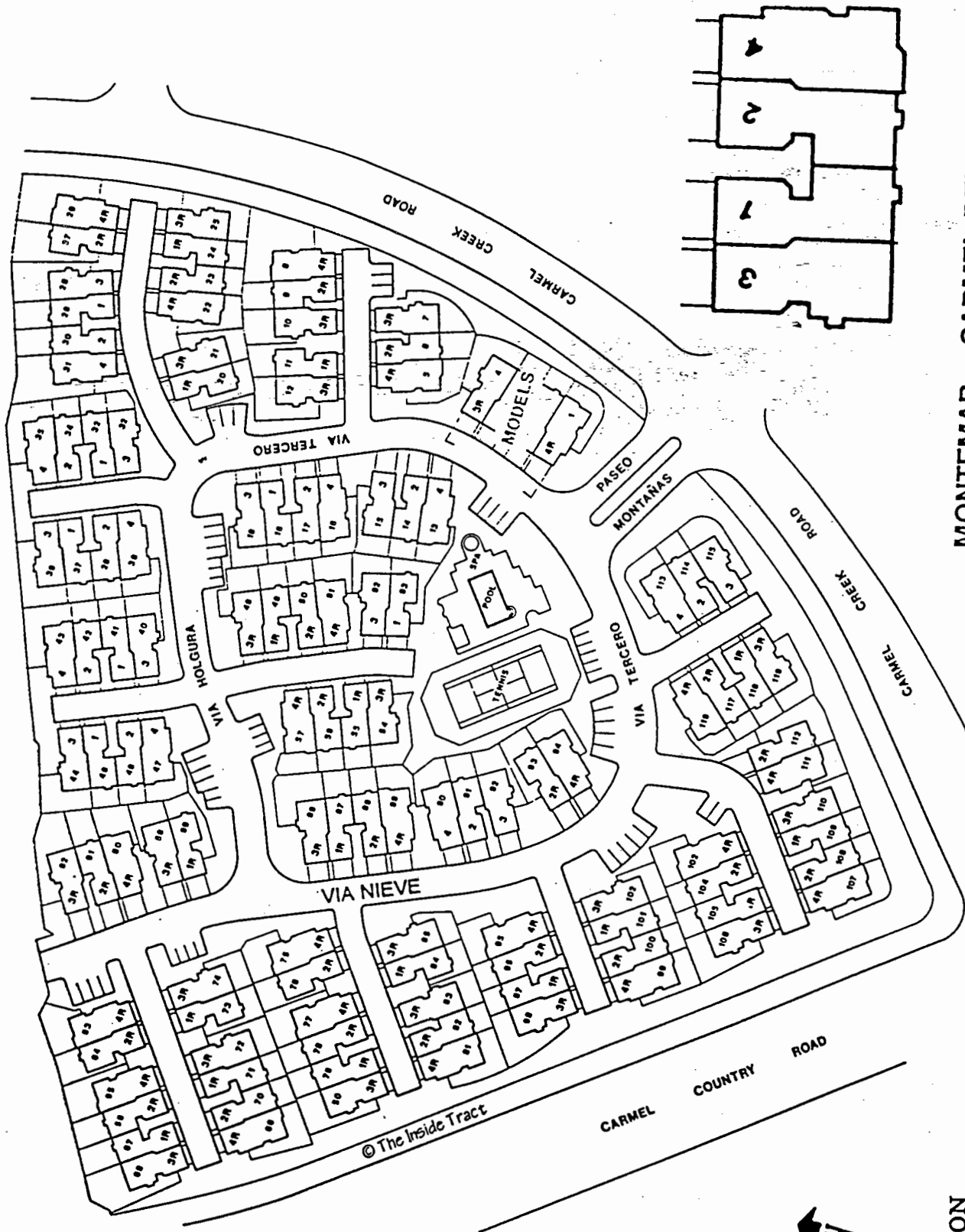


Montemar

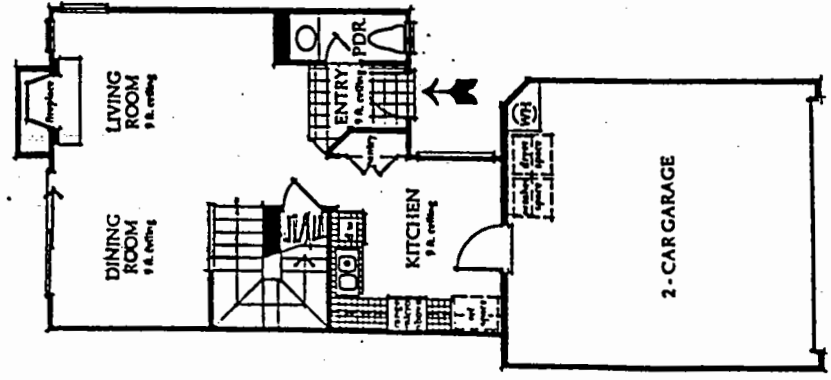
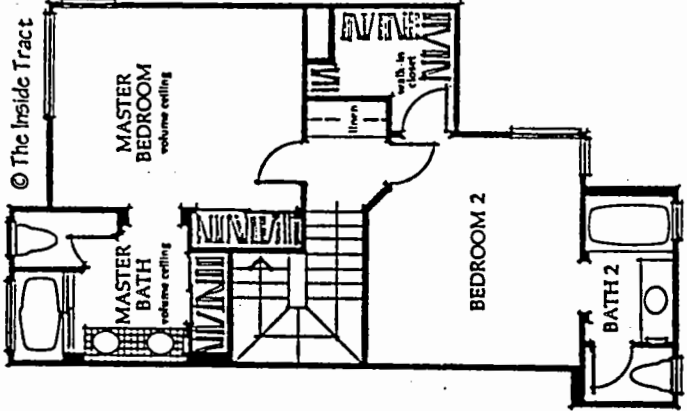
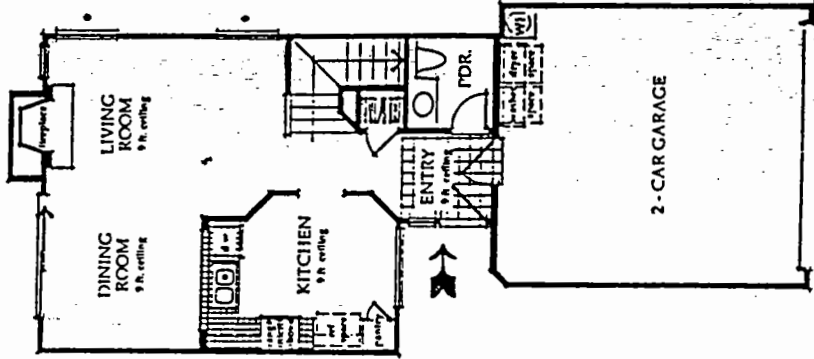
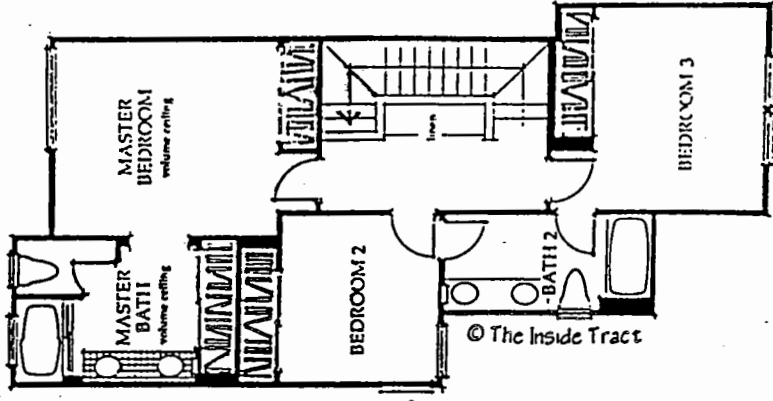




MONTEMAR - CARMEL DEL MAR

CAUTION

This site plan may have been changed by the builder and there may be more phases that are missing from our files. If you find an error or have more info please call us. Thank you.



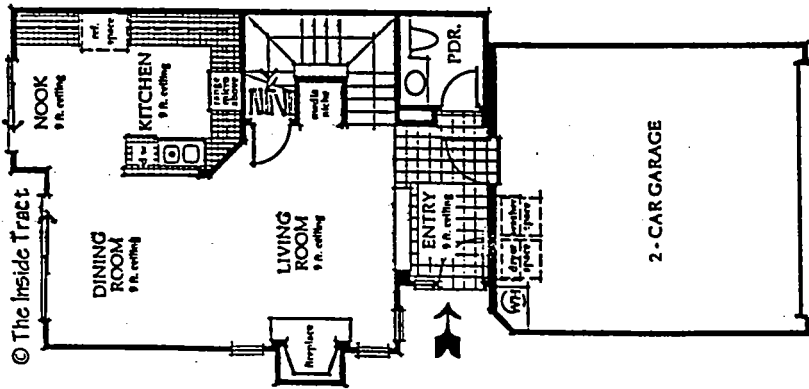
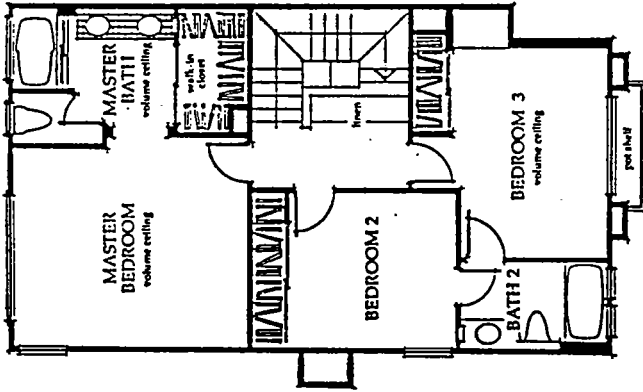
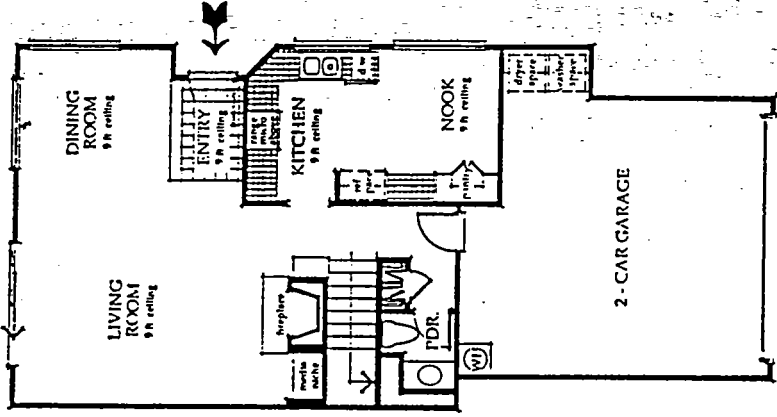
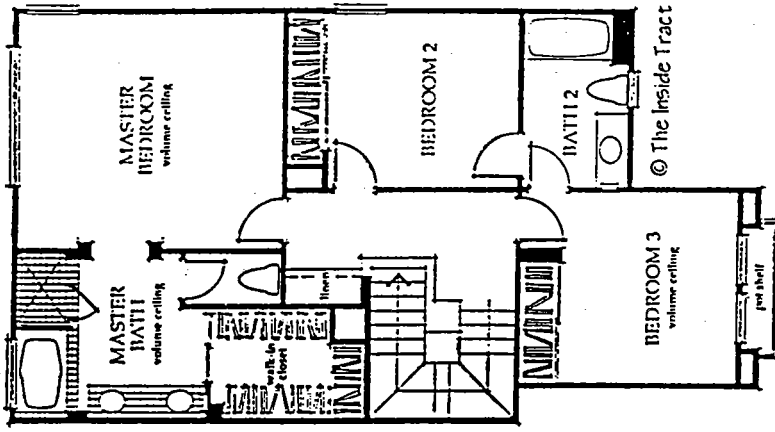
* These windows occur in end conditions only, windows may vary per building type and elevation

MONTEMAR - CARMEL DEL MAR

Model: PLAN 2
 Area: EDM B/T Code: MONM
 Approx SQ/FT: 1351
 ©The Inside Tract

MONTEMAR - CARMEL DEL MAR

Model: PLAN 1
 Area: EDM B/T Code: MONM
 Approx SQ/FT: 1200
 ©The Inside Tract



MONTEMAR - CARMEL DEL MAR
 Model: PLAN 4
 Area: EDM B/T Code: MONM
 Approx SQ/FT: 1617
 ©The Inside Tract

MONTEMAR - CARMEL DEL MAR
 Model: PLAN 3
 Area: EDM B/T Code: MONM
 Approx SQ/FT: 1429
 ©The Inside Tract

Features

Information Deemed Accurate
But Not Guaranteed

INTERIOR FEATURES

Custom woodburning
fireplace

Elegant raised-panel entry
and interior doors with
brass hardware

Ceramic tile or wood parquet
entry flooring

Laundry area in garage with
gas dryer hook-up and over-
head storage cabinets

KITCHEN FEATURES

European style oak cabinetry

GE self cleaning gas oven
and range

GE Microwave

GE multi-cycle dishwasher

Ceramic tile countertop

Breakfast nook

EXTERIOR FEATURES

Two-car attached garage
with automatic opener

Fenced rear yards

Concrete tile roof

Stylish exterior fixtures

Fully landscaped
common areas

Recreation area with
swimming pool and spa

Bar-b-que picnic area

Championship tennis court

MASTER BATH FEATURES

Custom designed european
style oak cabinets

Ceramic tile countertop with
double basin

Mirrored wardrobe doors

Glass tub enclosure

MONTEMAR - CARMEL DEL MAR