

Mayfield

A NEW NEIGHBORHOOD IN DEL MAR HIGHLANDS BY PARDEE HOMES

# MAYFIELD



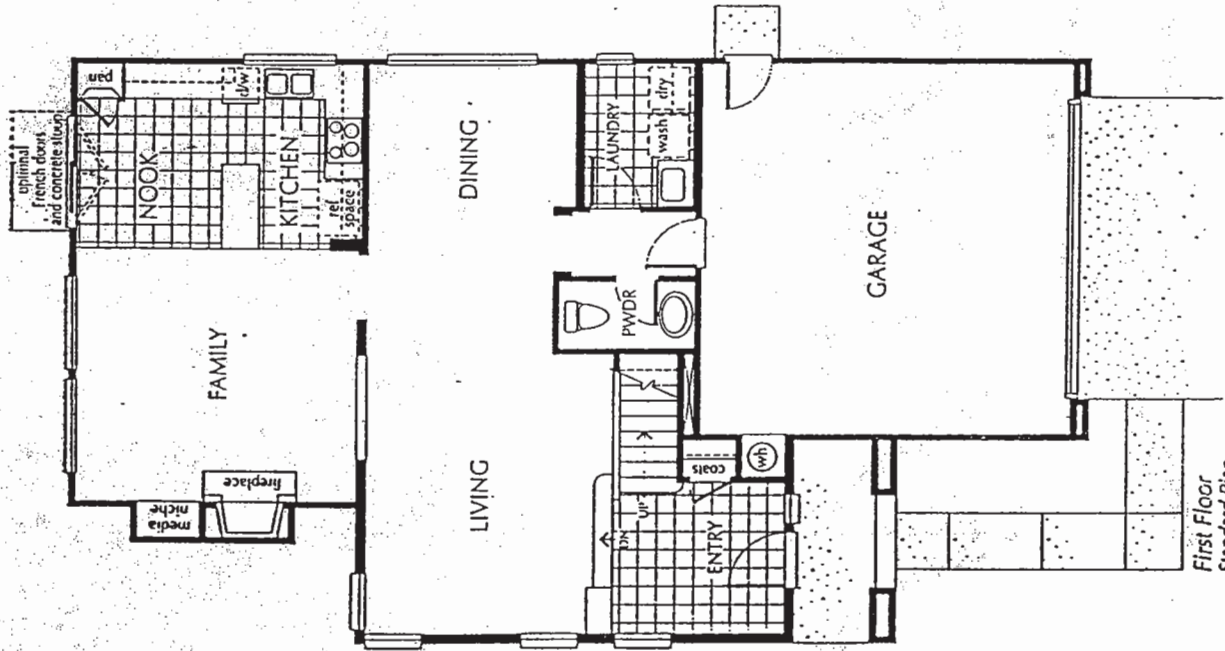
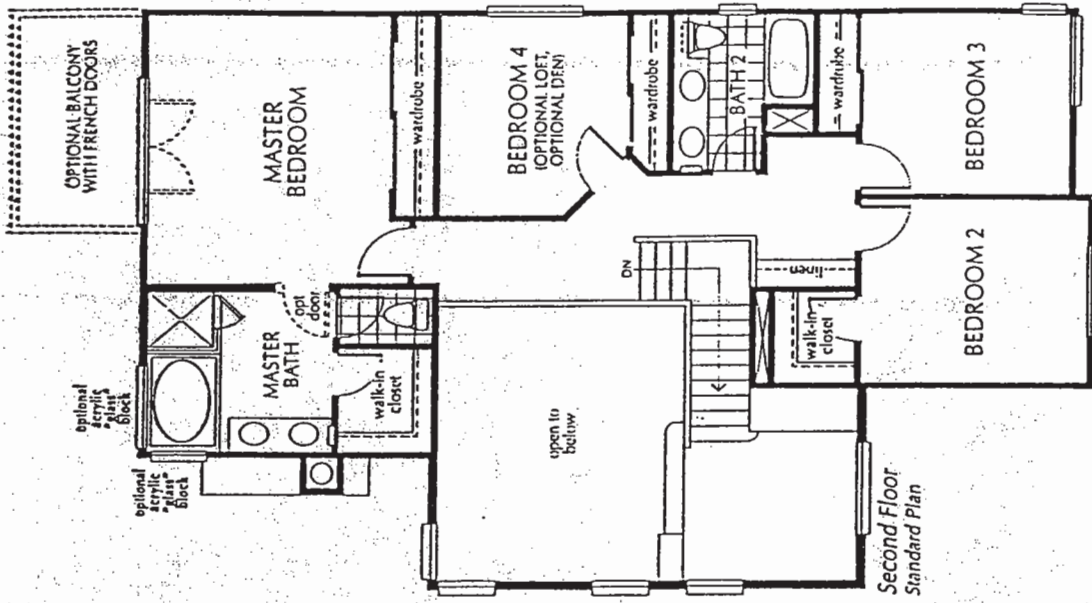
# Plan 1

STANDARD

4 Bedrooms

2 1/2 Baths

2,054 square feet  
(Approximately)



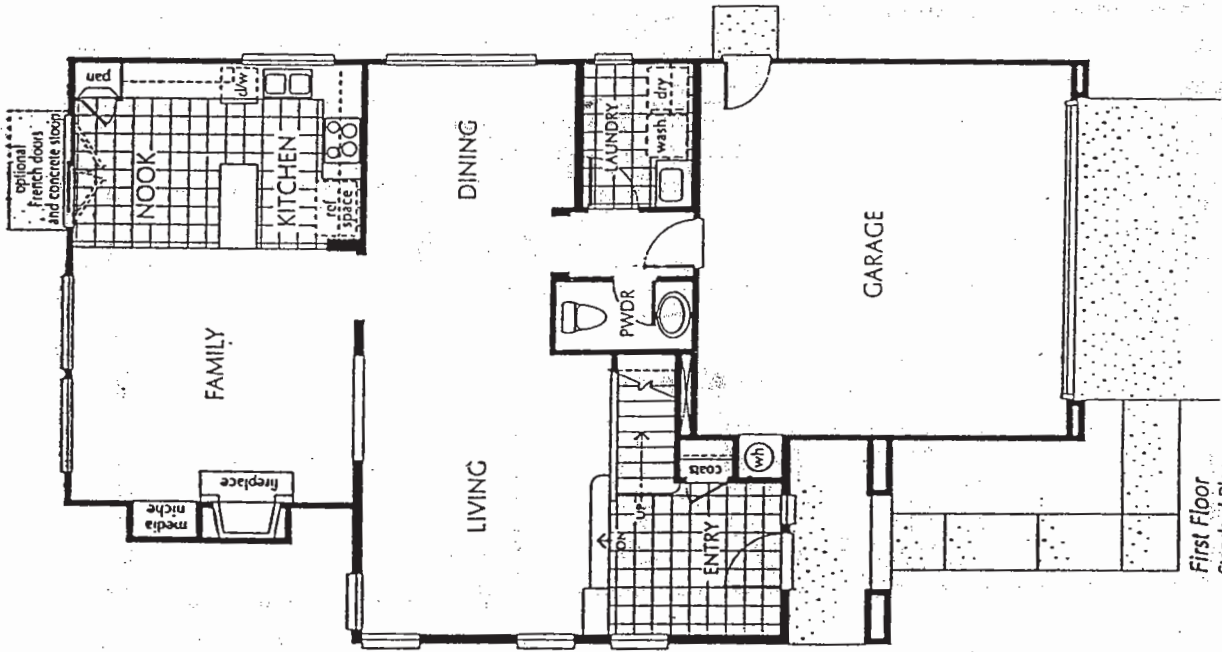
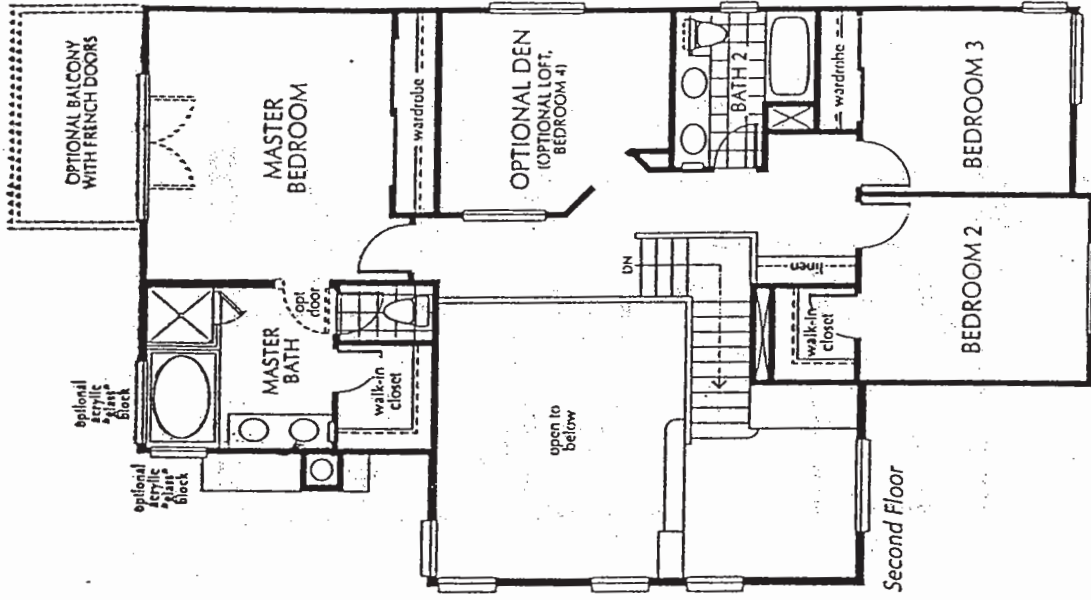
# Plan 1C

MODEL

4 Bedrooms  
(Optional Den shown)

2 1/2 Baths

2,054 square feet  
(Approximately)



First Floor  
Standard Plan

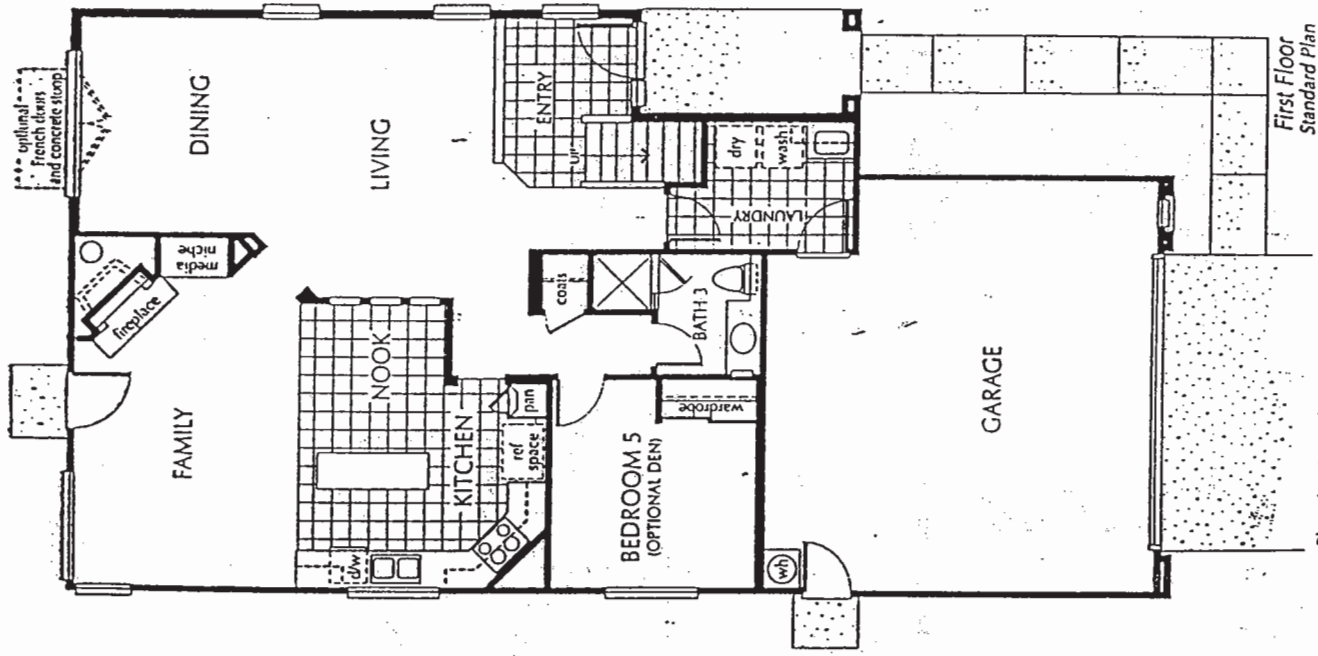
# Plan 2

STANDARD

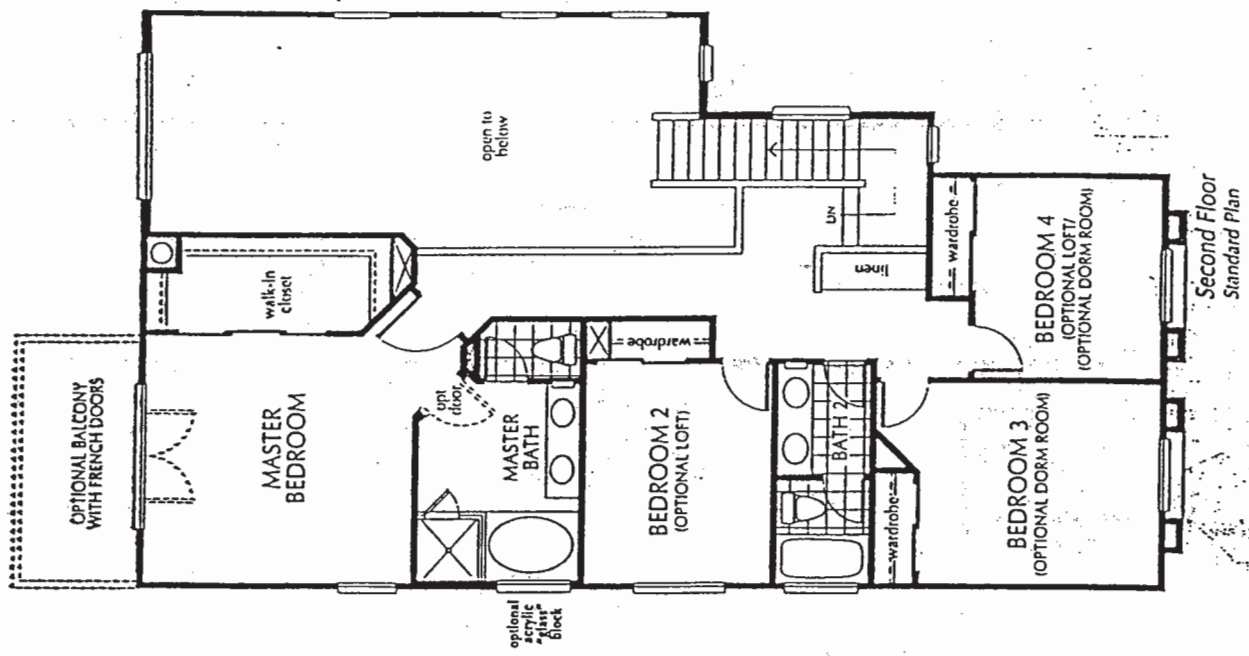
5 Bedrooms

3 Baths

2,330 square feet  
(Approximately)



First Floor  
Standard Plan



Second Floor  
Standard Plan

Elevation 2A only is a 2 car garage  
Elevations 2B & C have a 3 car garage



# Plan 2CR

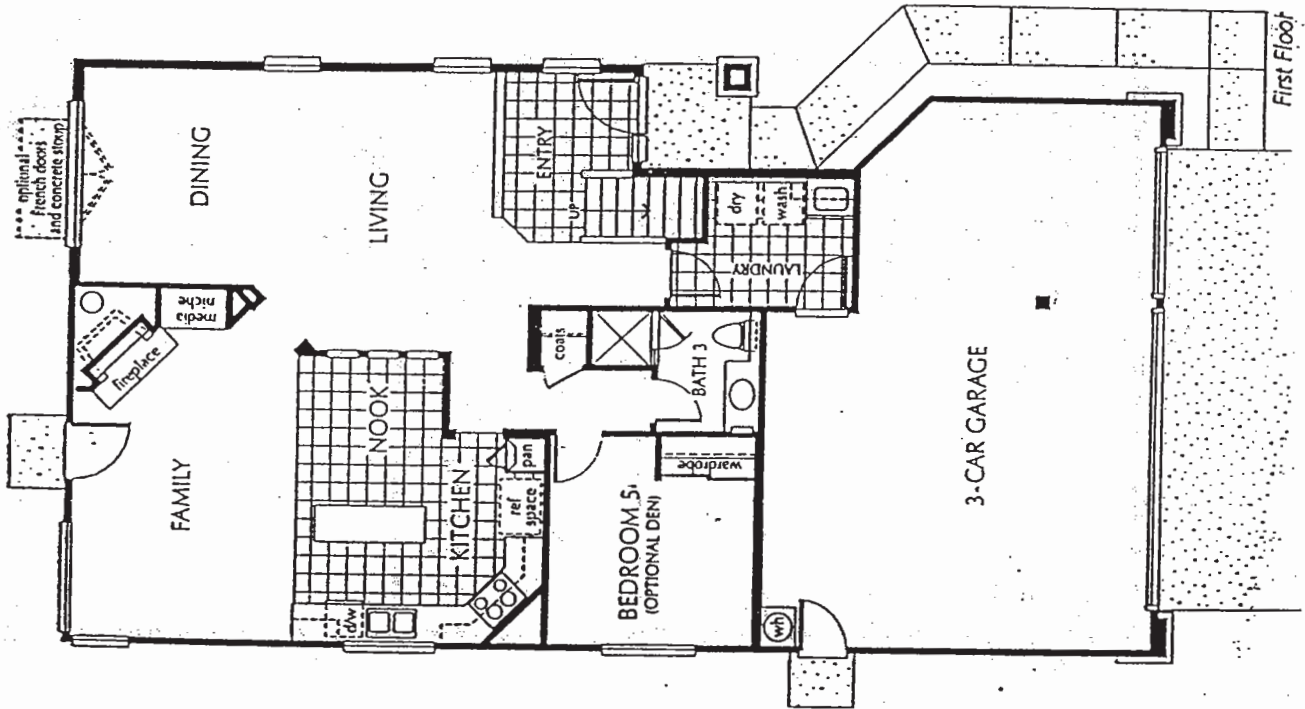
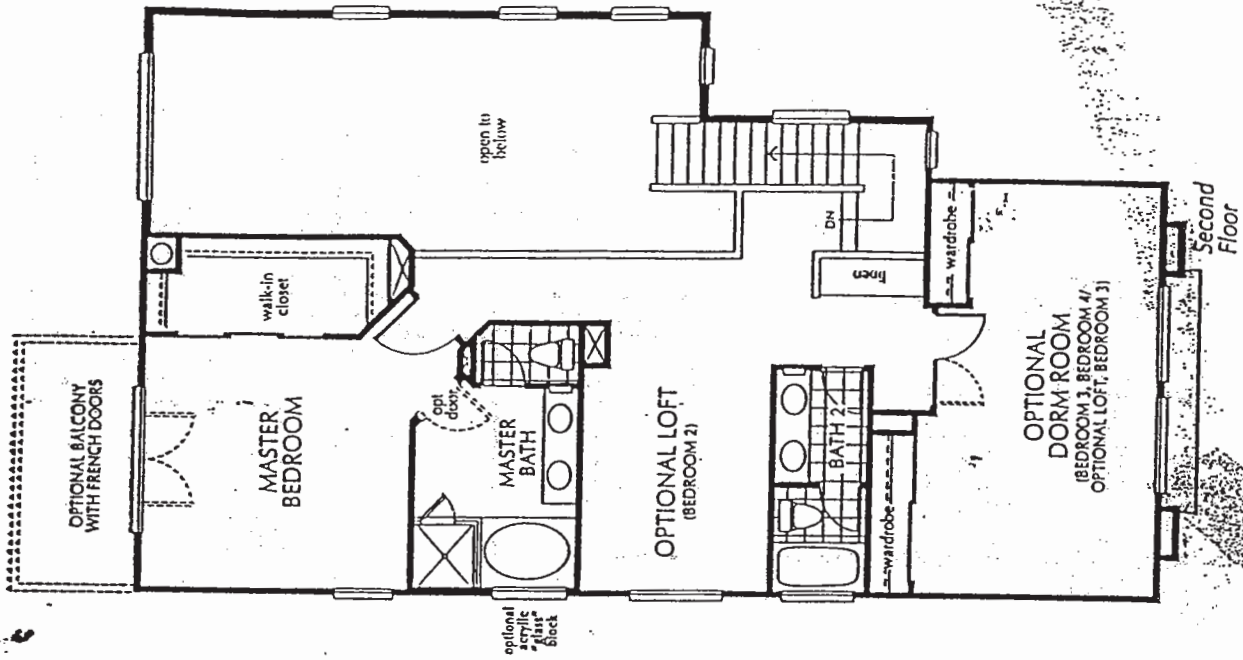
## MODEL

5 Bedrooms  
(Optional Loft and  
Dorm Room shown)

3 Baths

2,330 square feet  
(Approximately)

3-Car Garage



# Plan 3

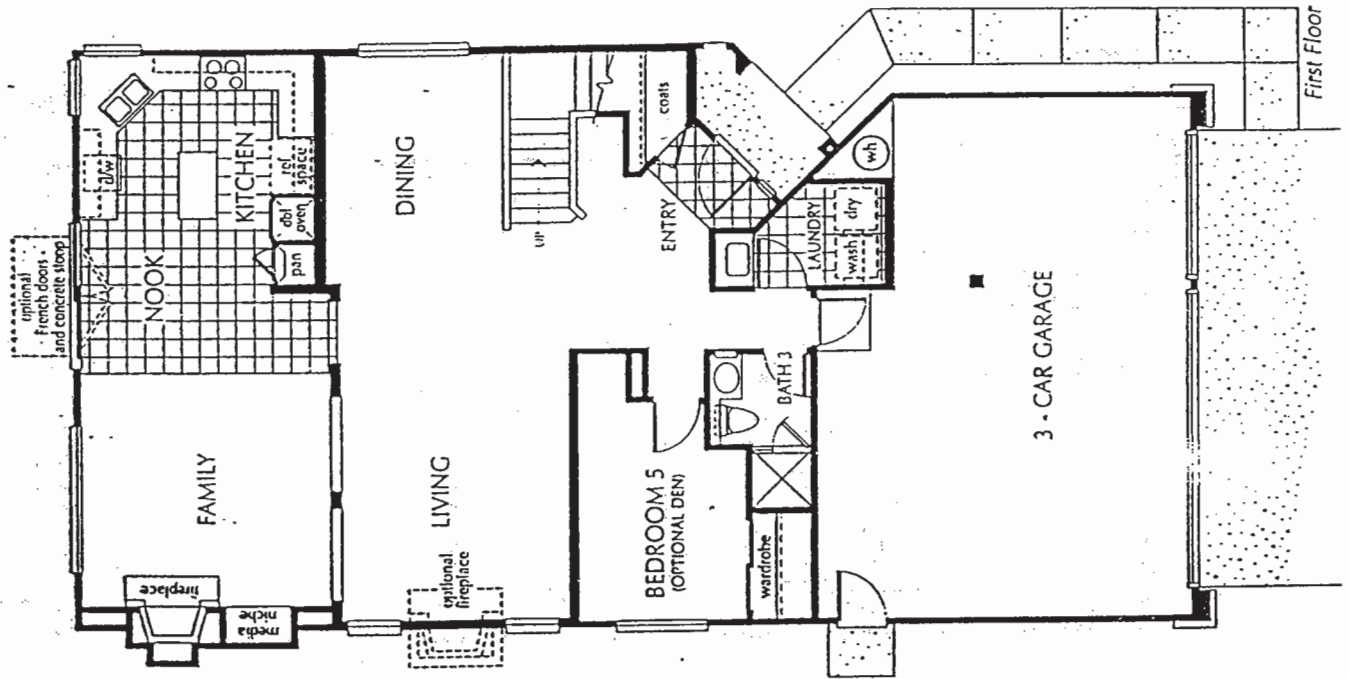
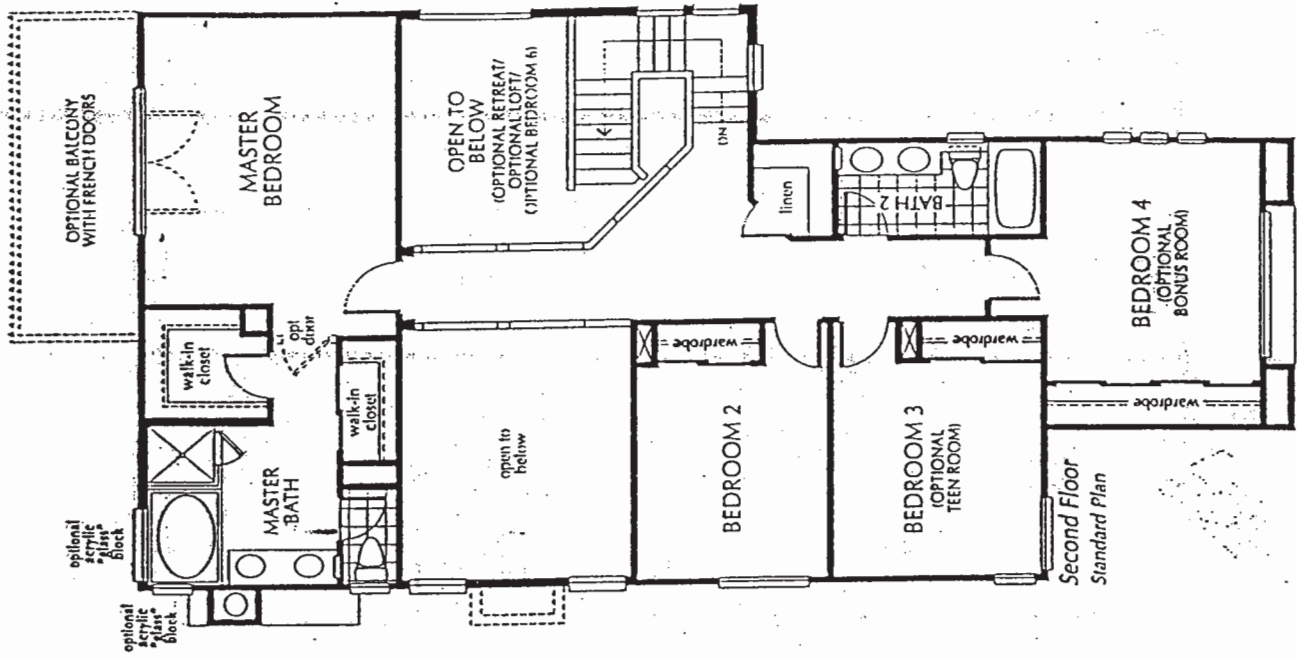
STANDARD

5 Bedrooms

3 Baths

2,524 square feet

(Approximately)



# Plan 3BR

## MODEL

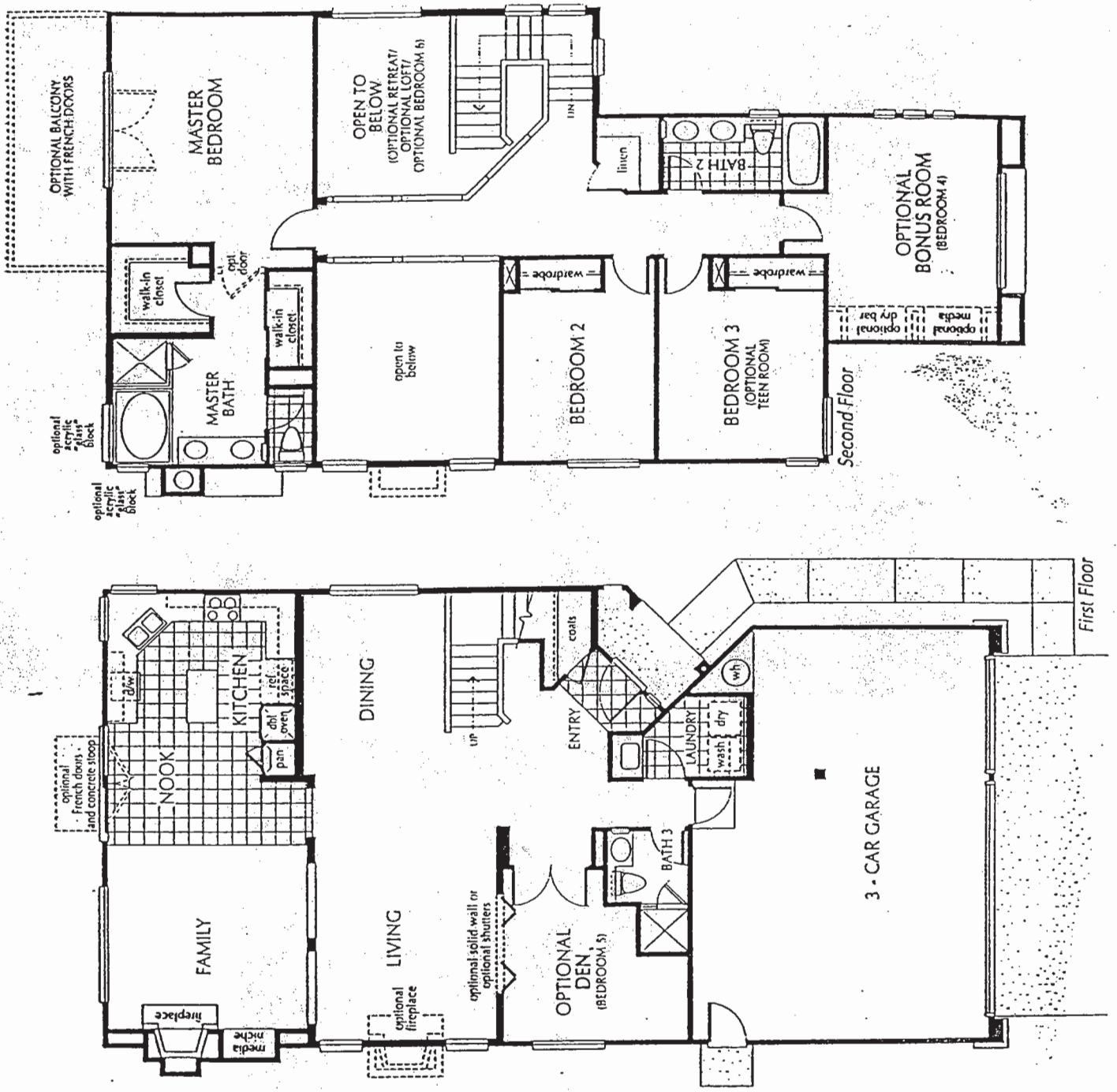
5 Bedrooms  
(Optional Den and  
Optional Bonus Room shown)

3 Baths

2,524 square feet  
(Approximately)

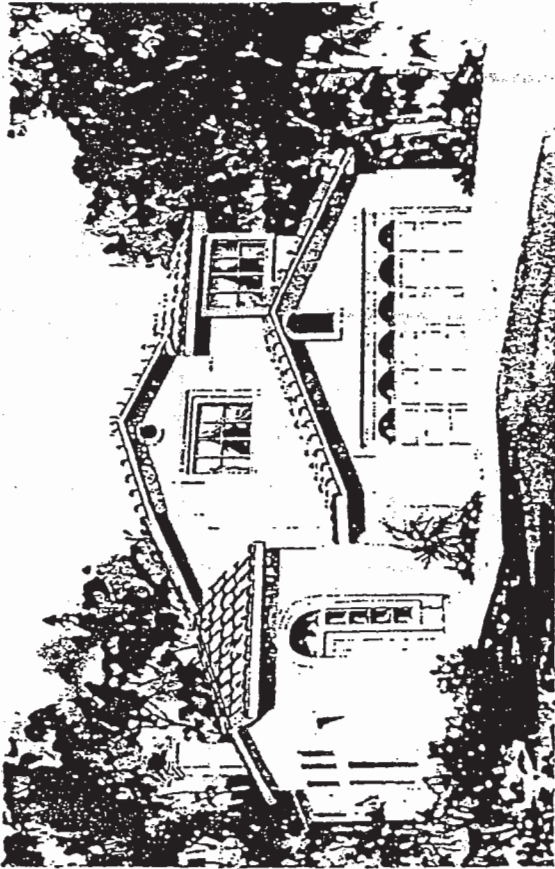
(Available with up to 6 Bedrooms,  
Approximately 2,645 square feet)

3-Car Garage

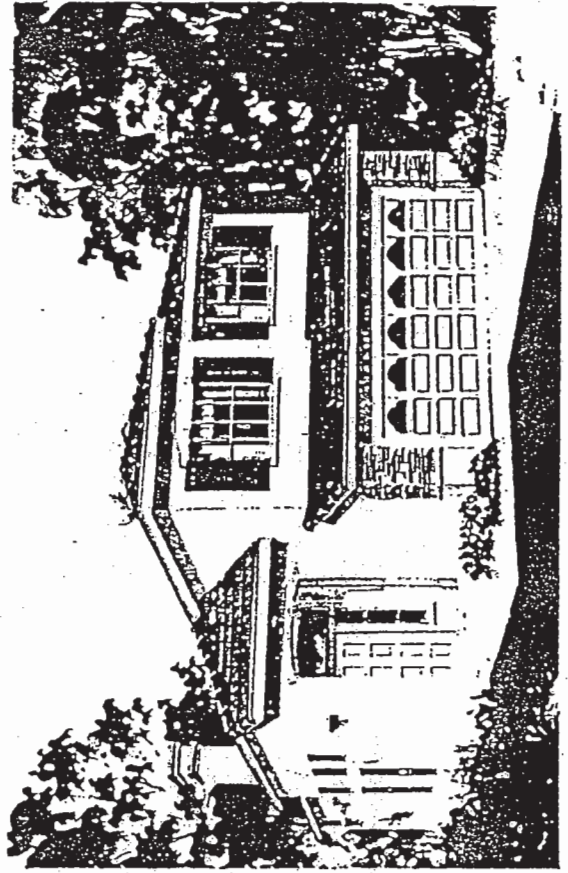




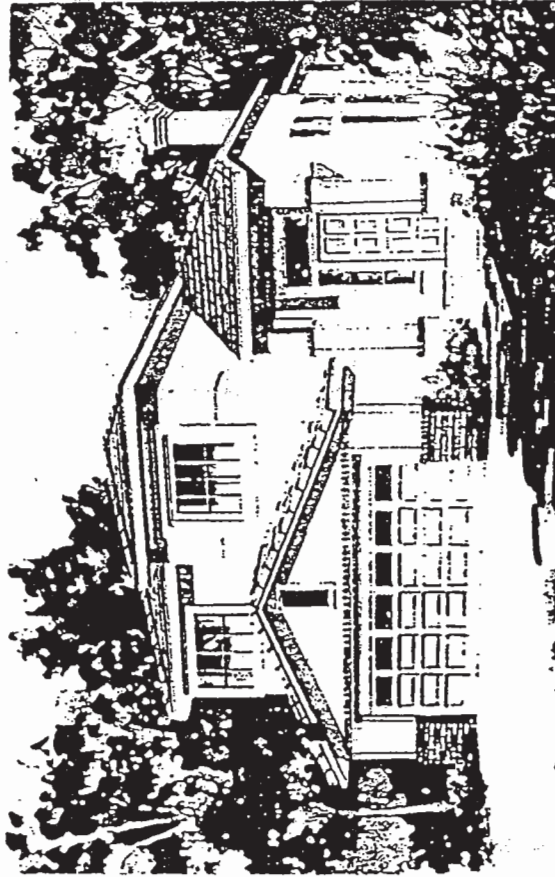
# Exteriors



1A



1C  
Model



1BR

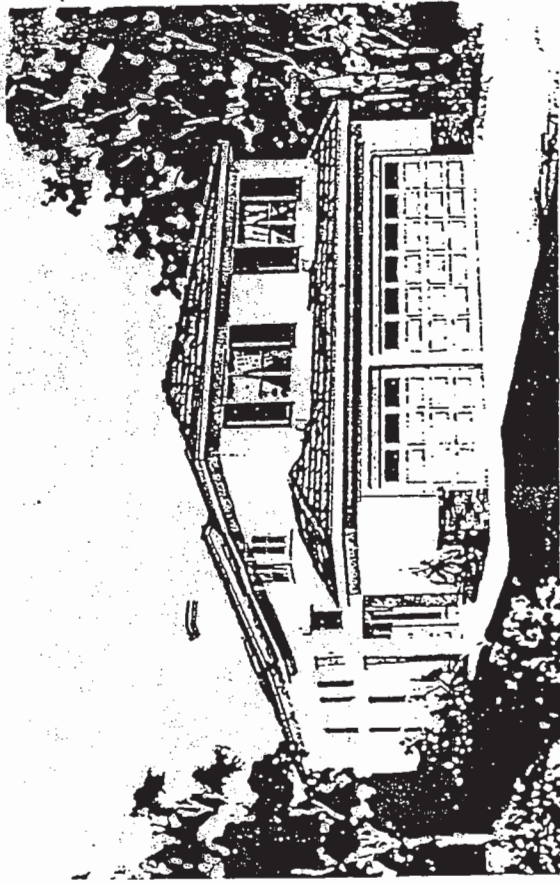
Note: All renderings for all plans are artist's conception. Including landscaping.

# Exteriors

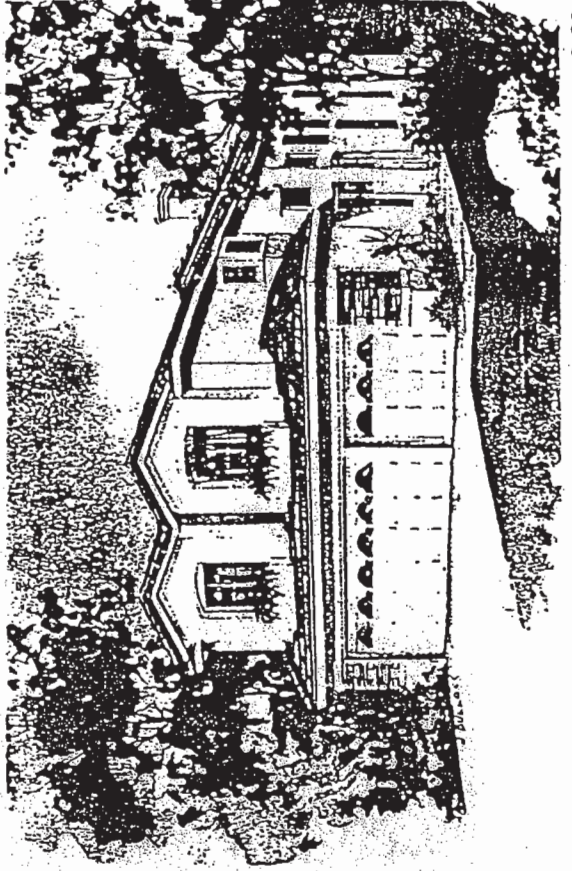
.....



2AR



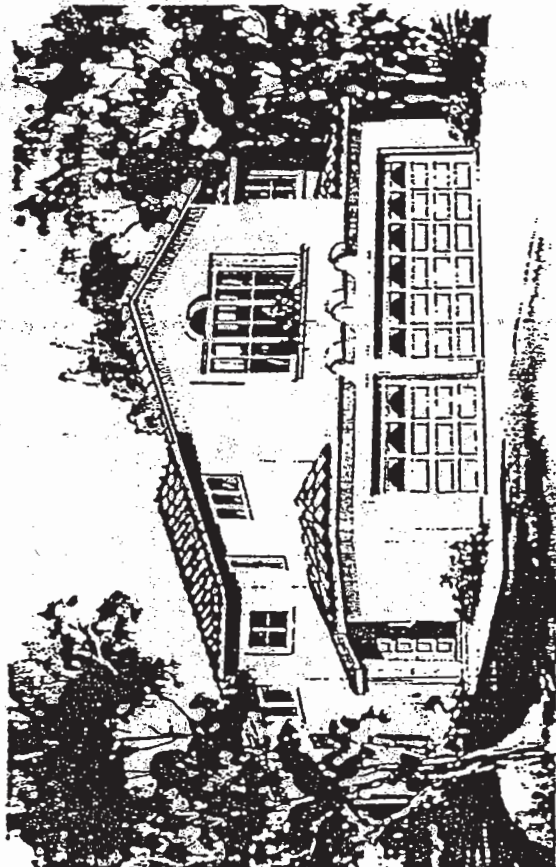
2B



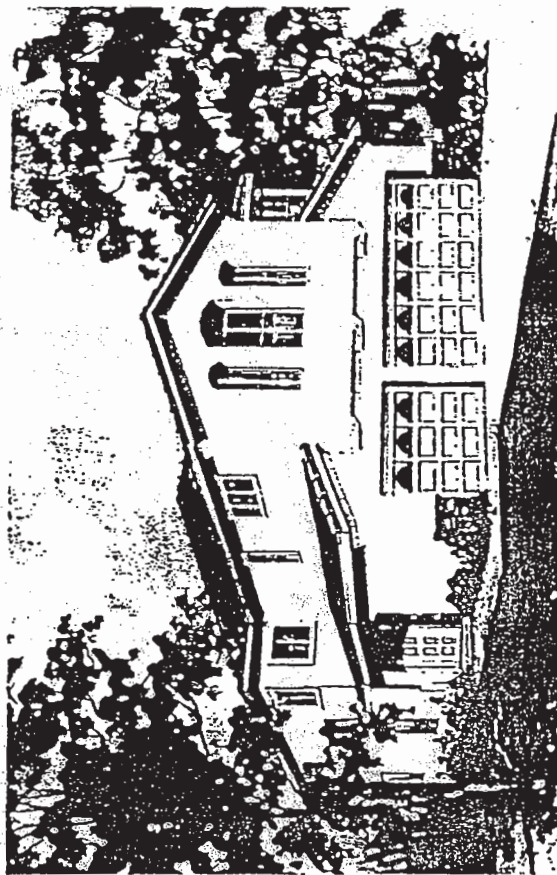
2CR  
Model



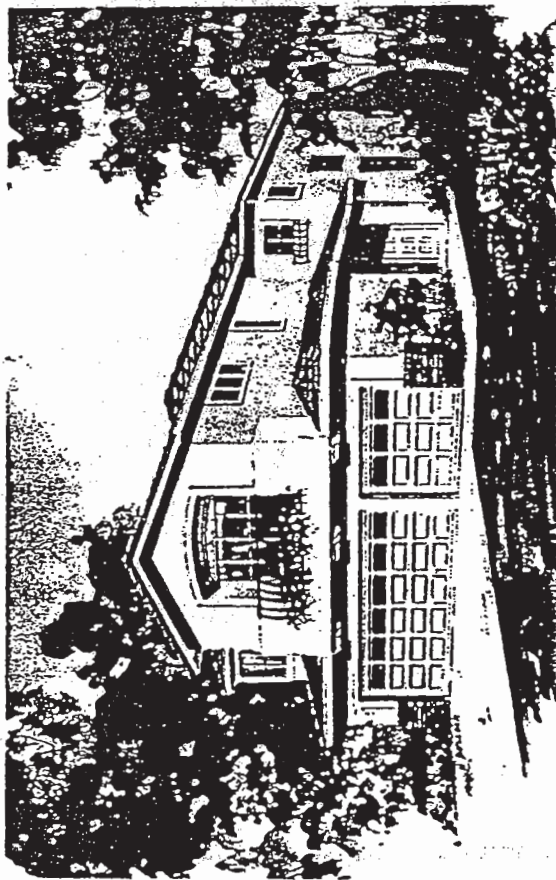
# Exteriors



3A




3C



3BR  
Model

# The Pardee Difference

## Our Promise, Our People.



When you buy a home from Pardee Homes, you have chosen one of the most experienced and knowledgeable home builders in the business. That expertise, developed by a dedicated team of people for more than 75 years, allows Pardee to deliver on its traditional promise to provide home buyers with quality, value and service.

Pardee's promise to its customers begins with land purchasing and carries through from design, construction and sales all the way to after-the-sale service. Throughout the company, Pardee people have dedicated many years to excelling in their particular expertise in the home building process. Thus, home building at Pardee is taken very seriously: tenure among Pardee's senior level management averages more than 15 years.



Pardee management believes that to meet its home buyers' needs, we must be entrepreneurial in every respect: to be first with land ownership; to be first with research that defines the communities and homes people will want; to be first with an organization of professionals whose teamwork and expertise produce the very best yet in residential construction at the lowest prices consistent with high standards.



Our people are what sets Pardee apart from the rest of the home building crowd. We know that our commitment to home buyers makes a dramatic difference in the kinds of communities and homes Pardee builds. We stay with you. We think our promised commitment to you will make a big difference in the way you feel about living in your new Pardee home.







13269 Hollyfield Court, San Diego, California 92130  
Tel: (619) 549-5213 Fax: (619) 621-5851

81 units to be complete  
late Jan. or Feb.  
No school fees  
Mella Ross (1) \$84  
(2) \$95  
(3) \$104  
CHK w/ mayfield w  
CMU target Book for any  
changes

**Schools:**

Solana Highlands, Earl Warren Jr. & Torrey Pines High School

**PLAN 1**

Four bedrooms/2.5 baths/2 car garage

Approximately 2054 square feet

From: **\$424,900**

**PLAN 2A**

Four **or** five bedrooms/3 baths

2 car garage

Approximately 2330 square feet

From: **\$429,900**

**PLAN 2B/C**

Four **or** five bedrooms/3 baths/3 car garage

Approximately 2330 square feet

From: **\$424,900**

**PLAN 3**

Four **or** five bedrooms/3 baths

three car garage

Approximately 2524 square feet

**or** bedroom #6 **or** retreat **or** loft

Approximately 2645 square feet

From: **\$429,900**

**Sales Representatives ~ Ilene Steiman & Marilyn Rollins**

Prices, terms & availability are  
subject to change without notice



# Options

## OPTIONS, IF YOU PLEASE\*

- Upgraded carpet and pad
- Upgraded hard surface flooring
- Six-panel wardrobe doors for secondary bedrooms
- Clear or obscure glass tub/shower enclosure (Bath 2)
- Security system
- Intercom
- Central vacuum
- Entertainment center cabinets (Family Room or Plan 3 Bonus Room)
- Wiring and speakers for stereo sound
- Single-lite French doors in selected areas
- Automatic garage door opener with additional control for single-car garage door
- Ceiling fan with or without light kit
- Recessed and/or track lighting
- Home Office Package
- Additional telephone outlets, electrical outlets and cable TV wiring
- Dimmer switch in the Dining Room
- Additional Dining Room and entry light fixture packages
- Wood shutters in the Optional Den (Plan 3)
- Garage storage unit
- Entry door window panels
- Thermo-Tru® entry door with matching side lite
- Dry bar (Plan 3 Bonus Room)
- Garage door window panels
- Fireplace in Living Room (Plan 3)

- Optional wall between Living Room and Dining Room (Plan 3)
- Thermostatically controlled air conditioning and gas forced-air heating with night set-back feature

## INTO THE GOURMET KITCHEN\*

- Kitchen counter top choices:
  - Accent liners and tiles in choice of designer-selected colors
  - Granite tile in choice of designer-selected colors
  - Corian® in designer-selected colors with two edge selections
- Natural Maple, High-Gloss White, Rosewood, Light Cherry or Limed Oak raised-panel cabinetry
- General Electric® black appliance package
- General Electric® refrigerator with or without cabinet panels
- General Electric® washer and dryer
- Recycling Center

## RETREATING TO THE MASTER SUITE\*

- Counter top and tub/shower surround choices:
  - Accent liners or tiles in choice of designer-selected colors
  - Granite and marble tile in choice of designer-selected colors
- Choice of Oak, Natural Maple, High-Gloss White, Rosewood, Bordeaux or Limed Oak raised-panel cabinetry in Master Bath
- Sliding raised-panel doors in Master Bedroom

- Master Bedroom balcony with French doors
- Door between Master Bedroom and Master Bath
- Spa jets in Master Bath oval soaking tub
- Acrylic 'glass' block over oval soaking tub

## BUYER'S CHOICE ROOM OPTIONS\*

- Plan 1 - Bedroom 4 or Optional Den/Optional Loft
- Plan 2 - Bedroom 2/Optional Loft; Bedrooms 3 & 4 or Optional Dorm Room; Bedroom 4 or Optional Loft; Bedroom 5 or Optional Den
- Plan 3 - Bedroom 3/Optional Teen Room; Bedroom 4 or Optional Bonus Room; Open to Below or Optional Loft/Optional Retreat/Optional Bedroom 6; Bedroom 5 or Optional Den

\*Available at additional cost and subject to construction cutoff dates.

## IMPORTANT NOTES

Certain models have carpet and flooring not included in the sales price. Our sales price includes carpet and hard-surface flooring only in those areas specifically listed above under "Features" or as shown on the floor plans. Our models have been professionally decorated in order to give you ideas as to how each home may be furnished. Items such as wallpaper, custom paint colors, custom built-ins, custom carpet and flooring, plants, drapes, mirrors, beams, paintings, wall hangings, and furnishings are decorator items and are not included in the sales price. Some options may not be available after construction cutoff dates or only at additional cost.

The items listed herein, with the exception of the optional features listed above or as shown on the floor plans, are presently being included in all homes, except where indicated otherwise. Some of these items are manufactured and supplied by other companies for installation into Parade homes. We reserve the right to substitute manufacturers and to make other changes. Certain items included in our homes are warranted by the individual manufacturer and/or suppliers. Binders containing copies of these warranties are available for inspection, upon request, in our sales office. Certain landscaping is part of the model area and is, therefore, not representative of the basic land scaping plan. This professional landscaping is not available from the builder. Prices, terms, and specifications are subject to change without notice. Prices do not include optional items.

We reserve the right to modify, relocate or eliminate any or all of the features, options, specifications, plans, utilities, design, size or shape thereof, all without notice or obligation to any purchaser. All square footage is approximately.

# Features

## EXTERIOR DETAILING

- Classic traditional architecture
- Dramatic white frame, dual-pane windows
- Elegant six-panel entry doors with distinctive Kwikset® antique brass hardware
- Metal roll-up garage doors
- Front-, side- and rear-yard fencing
- Grass yard with single tree

## GRACIOUS LIVING AREA

- Architecturally specified recessed lighting
- Choice of traditional wood parquet flooring or ceramic tile in foyer
- Spacious Living Room with dramatic vaulted ceilings
- Plush carpeting in choice of designer-selected colors
- Wood-burning fireplace with gas lighter valve
- Ceramic tile face and hearth in choice of selected colors; 8" x 8" (Plans 1 & 2) and 12" x 12" (Plan 3)
- Six-panel interior doors
- Kwikset® antique brass interior door lever hardware
- Pedestal sink in Powder Room (Plan 1)
- Wide rocker light switches
- Rounded-corner interior walls
- Mirrored wardrobe doors in all Bedrooms

## INTO THE GOURMET KITCHEN

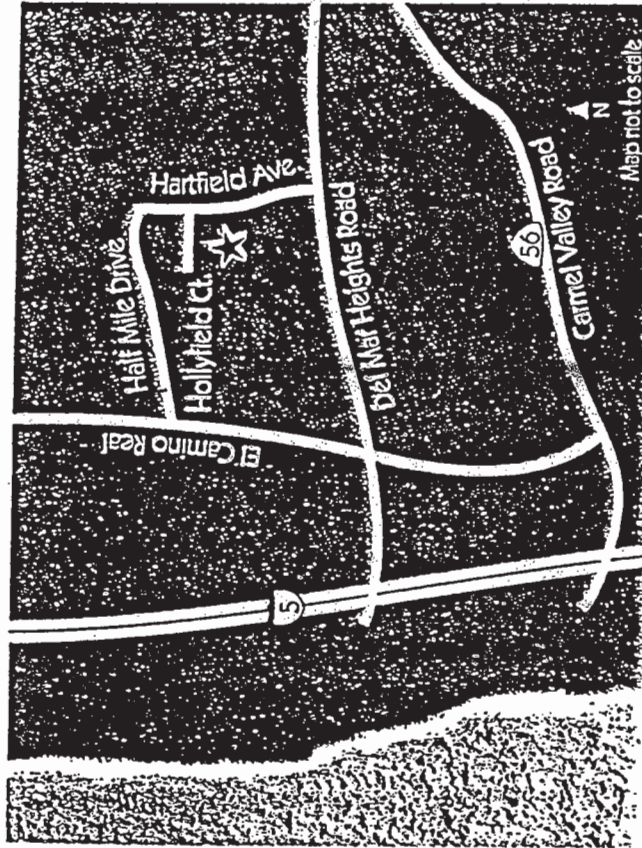
- Easy care, no-wax vinyl sheet flooring
- Hand-set 6" x 6" white ceramic tile counter top
- Choice of raised-panel Oak or White Matte cabinetry
- Dual basin sink with Delta® white Gourmet pullout spray faucet
- General Electric® white-on-white appliances:
  - 30" glass cooktop with sealed burner design and pilotless ignition (All Plans)
  - Microwave oven hood (Plans 1 & 2)
  - 30" built-in oven below cooktop (Plans 1 & 2)
  - Oven/microwave combination (Plan 3)
  - Vent hood (Plan 3)
  - Multifunction dishwasher
- ISE® garbage disposal
- Refrigerator space plumbed for automatic ice maker
- Storage pantry
- Cozy nook area

## RETREATING TO THE MASTER SUITE

- Elegant Master Bedroom Suite
- Walk-in closet with mirrored wardrobe doors
- Large oval soaking tub
- Separate shower with clear glass enclosure
- Dual adult-height sinks with hand-set 4" x 4" white ceramic tile counter top and tub/shower surround
- Distinctive Delta® plumbing fixtures

## FOR YOUR SAFETY AND COMFORT

- Pressure-balanced plumbing fixtures in all showers
- Category 5 high-speed, digital wiring throughout, including category 5 telephone jacks
- Prewired for telephone in all bedrooms and Kitchen
- Prewired for cable TV using RG6 coaxial cable in all bedrooms, Family Room and Kitchen
- Prewired for ceiling fans in all bedrooms, Family Room and Plan 3 Bonus Room
- Smoke detectors with warning buzzer and battery backup
- Interior Laundry Room with sink
- 220 volt electric outlet and gas line for dryer in the Laundry Room
- Water-saving showerheads and low-flow toilets
- Silent Floor™ system engineered for stronger and quieter floors
- Automatic garage door opener with two controls for double doors
- Gas barbecue outlet
- Vinyl-coated wire shelving in all closets
- Prewired for security system
- Night set-back thermostat for gas forced-air heating



From I-5, take Del Mar Heights Road east to Hartfield Avenue, then go left (north) to Hollyfield and turn left (west) to models.

# Mayfield

13269 Hollyfield Court, San Diego, California 92130 Tel: (619) 549-5213 Fax: (619) 621-5851

For more information, call 1-888-4-PARDEE or shop our new Web site at [www.pardee.com](http://www.pardee.com)



recycled paper



EQUAL HOUSING OPPORTUNITY



PARDEE