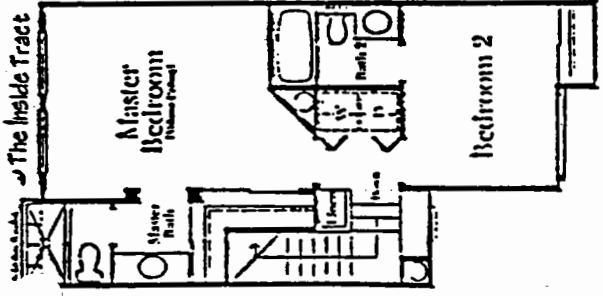
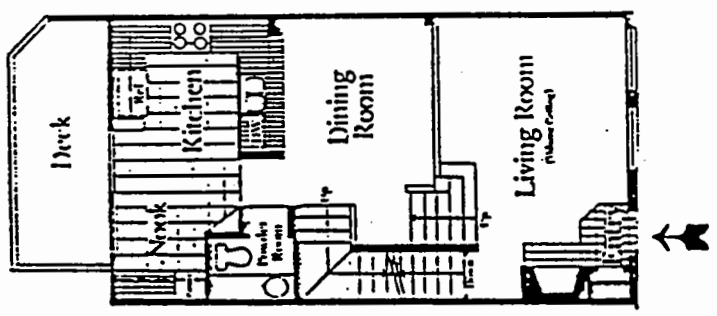


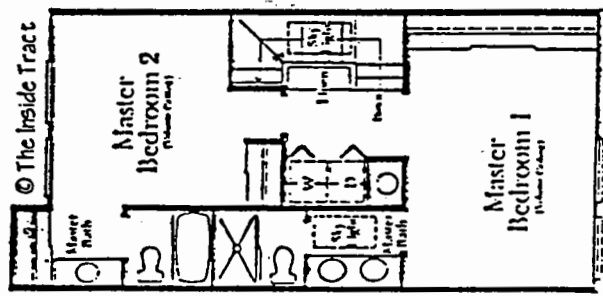
Halcyon



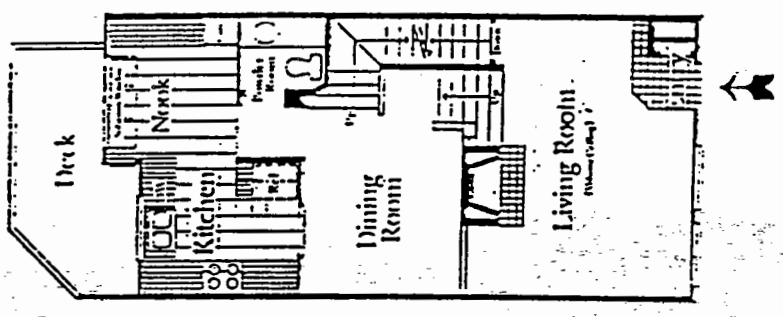
© The Inside Tract



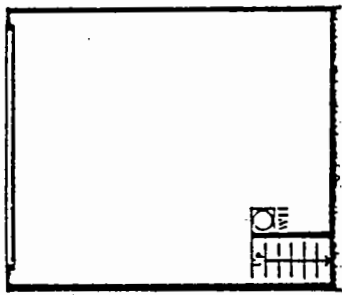
HALCYON DEL MAR
 Model: PLAN 1
 Area: EDM B/T Code: HAL
 Approx SQ/FT: 1123
 ©The Inside Tract

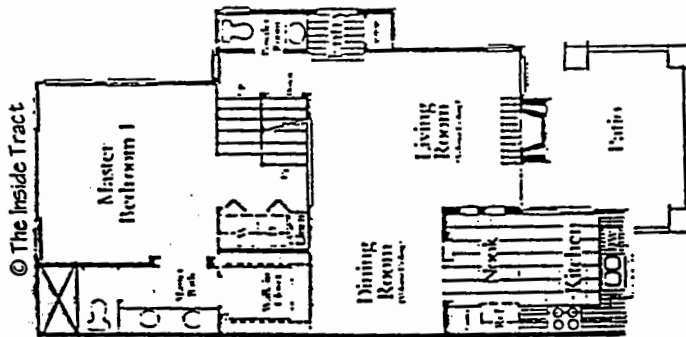
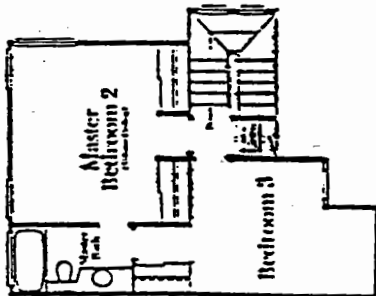


© The Inside Tract



HALCYON DEL MAR
 Model: PLAN 2
 Area: EDM B/T Code: HAL
 Approx SQ/FT: 1291
 ©The Inside Tract

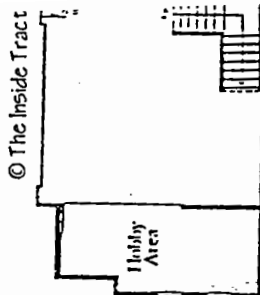
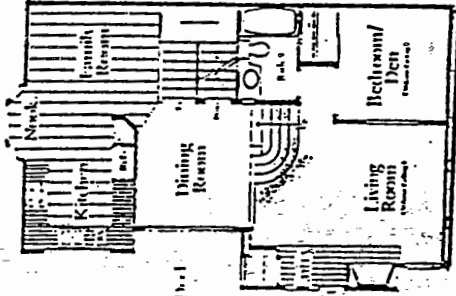
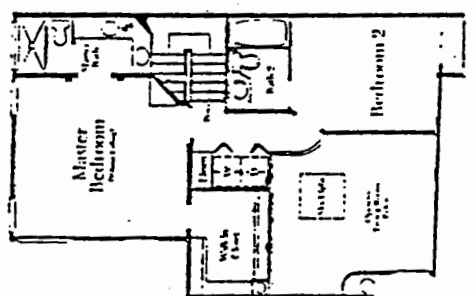




© The Inside Tract

HALCYON DEL MAR

Model: PLAN 3
 Area: EDM B/T Code: HAL
 Approx SQ/FT: 1384
 ©The Inside Tract



© The Inside Tract

HALCYON DEL MAR

Model: PLAN 4
 Area: EDM B/T Code: HAL
 Approx SQ/FT: 1623
 ©The Inside Tract

Features

Information Deemed Accurate
But Not Guaranteed

INTERIOR DETAILING

- Dramatic volume ceilings.
- Direct access garage. Automatic garage door openers.
- Artistic glass block detailing.
- Colonist doors with raised paneled, sculpture detailing, except coat closet.
- Masterfully designed windows.
- Custom radius wall corners.
- Built-in plant shelves, art niches and custom soffit details in selected plans.
- Ceramic tile entry with choice of colors.
- Designer selected carpeting included in living room, dining room, stairs, all bedrooms and halls.
- Wood burning fireplace with glass front and gas log-lighter valve.
- Ceramic tile hearth.
- Oak capped hand railing.
- Gas forced air heating.
- Sliding glass doors to deck or patio.
- 40-gallon gas hot water heater.
- Prepared for air conditioning.
- Convenient interior laundry area.

KITCHEN

- General Electric gas range with self-cleaning oven.
- Spacious oak pantry.
- Breakfast nook.
- Hand-set ceramic tile counter tops and splash.
- Custom designed oak cabinets, choice of color.
- Overhead recessed light fixtures. Florescent lighting under cabinets.
- General Electric built in 3-cycle dishwasher.
- Double porcelain sink with garbage disposal.
- Gourmet Spray™ faucet.
- Plumbed for automatic icemaker.

MASTER SUITE AND MASTER BATH

- Double basin (Plans 2, 3, and 4).
- Full width mirrors and pullmans.
- Decorative porcelain accented plumbing hardware.
- Elegant Corian counter tops with fluted custom edges.
- Spacious double poled wardrobe or walk-in closet.
- Tempered glass shower enclosure.
- Water preserving toilets and shower heads.
- Recessed light fixtures over vanities.

EXTERIOR

- Solarium windows (Plan 1, 2, and 4).
- Glass skylight (Plan 2 and 4).
- Additional fenced garden area (Plans 1 and 2).
- Spacious deck or patio with lattice trim.
- Plumbed for gas barbecue.
- Paneled Colonist front entry door with glass detail.
- Concrete tile roof.

RECREATION AREA & LANDSCAPE

- Lushly landscaped grounds, pool and spa.
- Eleven individually designed and landscaped "Halcyon Gardens" sensitively located within the community.
- Common areas and exterior maintained by homeowners association.

OPTIONAL

- General Electric microwave.
- Decorator ceramic tile selection.
- Decorator carpet selections.
- Nutone security system.
- Nutone Intercom system.
- Clear glass tub and shower enclosures.
- Nutone central vacuum.
- Air conditioning.
- Additional T.V., telephone and electrical outlets.
- Mirrored wardrobe doors.

© The Inside Tract

HALCYON DEL MAR